

TABLE TOPS

TUFF TOP® PREMIUM LAMINATE

Our high quality and attractive Tuff Top® Premium Laminate tabletops are perfect for any commercial hospitality, office or canteen-based dining environment. These tops are manufactured in the UK using only premium branded laminates which are scratch resistant and heat resistant to 180 °C. The ultimate in durability.

Round Tuff Top® Premium table top in White Carrara Marble (page 15) with a Copper Metallic Edging (page 21)



SWATCH SAMPLES
ARE AVAILABLE FOR
EVERY TABLETOP
TYPE AND DÉCOR
THAT WE
OFFER





Heat resistant to 180 °C,
and scratch resistant
to suit any indoor
environment



FSC certified
MDF Core



Bespoke edge
shape and colour



Antimicrobial, easy
clean, wipeable
surface



5 year structural
warranty



2mm impact resistant
ABS edge as standard



Metal insert service

IN
STOCK &
MADE TO
ORDER

STOCKED DÉCORS & SIZES



700mm Round White Tuff Top® Premium stocked Laminate (page 10) on a Danilo Medium Dining Height Base (page 68) with 2 Strata Anthracite Side Chairs (page 97)
Product code: SSRMD001-700DLWHI-STRANT2

STOCKED DÉCORS (25MM)

We hold 4 of our most popular décors in stock, available for same day despatch.



WHITE

Colour code: LWHI
Décor code: 8100



OAK

Colour code: LOAK
Décor code: H3368 ST9



WALNUT

Colour code: LWAL
Décor code: H3734 ST9






WENGE

Colour code: LWEN
Décor code: H1137 ST12

STOCKED SIZES

Round, Square and Rectangle shapes, with up to 10 size variations for each décor.

TABLE SHAPE	SIZE
	500 × 500mm
	600 × 600mm
	700 × 700mm
	800 × 800mm
	600mm diameter
	700mm diameter (white only)
	800mm diameter (white only)
	900mm diameter (white only)
	1000mm diameter (white only)
	1200 × 700mm

TUFF TOP® PREMIUM HIGH GLOSS

IN STOCK






WITH METALLIC GOLD EDGING

- Luxury high gloss look, with scratch resistant finish
- 25mm Contract grade laminate, suitable for a busy hospitality setting
- Heat resistant to 180 °C to suit any indoor environment.
- Easy clean, wipeable surface

SWATCH SAMPLES
ARE AVAILABLE FOR
EVERY TABLETOP
TYPE AND DÉCOR
THAT WE
OFFER



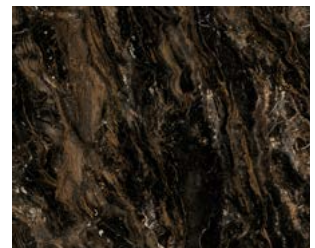
Tuff Top® Premium - High Gloss Table Top in Marbled Cappuccino with Metallic Gold edging on a Bistro Dining Height Base (page 85) Powder Coated Gold (page 126) with 2 Fresco Side Chairs (page 101)

TABLE SHAPE	SIZE
	600 × 600mm
	700 x 700mm
	700mm diameter
	1200 × 700mm



CALACATTA MARBLE

Code: F3460



MARBLED CAPPUCCINO

Code: F9482



MADE TO ORDER PREMIUM LAMINATE



Our Tuff Top® Premium laminate range has over 100 décors for you to choose from. A massive selection of Solid / Block colours, Wood Effect décors, and Stone Effect décors. We want to give you the option to fulfil any design brief or meet any brand theme that you want to achieve.

THICKNESS

Available as standard as a 25mm thickness, or as a 40mm thickness for an additional charge - see price list



25MM (STANDARD)



40MM



700mm Round White Carrara
Marble Tuff Top® Premium MTO
Top with Metallic Gold ABS
Edging on a Danilo
Round Medium Dining
height Base (page 68)
Powder Coated Gold (page 126)

MADE TO ORDER SIZES

TABLE SHAPE	SIZE
	500 x 500mm
	600 x 600mm
	700 x 700mm
	800 x 800mm
	900 x 900mm
	1000 x 1000mm
	1200 x 1200mm
	600mm diameter
	700mm diameter
	800mm diameter
	900mm diameter
	1000mm diameter
	1200mm diameter
	700 x 600mm
	1000 x 500mm
	1000 x 600mm
	1100 x 700mm
	1200 x 600mm
	1200 x 700mm
	1200 x 750mm
	1200 x 800mm
	1200 x 1000mm
	1400 x 700mm
	1400 x 800mm
	1400 x 1000mm
	1400 x 1200mm
	1500 x 700mm
	1500 x 750mm
	1500 x 800mm
	1500 x 1000mm
	1500 x 1200mm
	1600 x 700mm
	1600 x 800mm
	1600 x 1000mm
	1600 x 1200mm
	1700 x 700mm
	1800 x 700mm
	1800 x 800mm
	1800 x 1000mm
	1800 x 1200mm
	2000 x 700mm
	2000 x 800mm
	2000 x 1000mm
	2000 x 1200mm



600mm diameter Black Pietra Grigia
25mm thick Tuff Top® Premium laminate
top with Bronze ABS edging
Product code: P600DL25F206BRO

EGGER DÉCORS

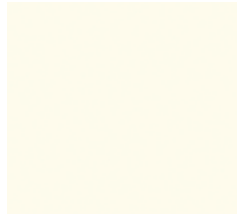


BLOCK DÉCOR COLOURS



ALPINE WHITE

Code: W1100 ST9



CREAM

Code: W911 ST15



CITRUS YELLOW

Code: U131 ST9



CURRY YELLOW

Code: U163 ST9



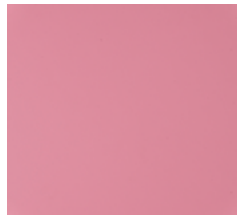
ORANGE

Code: U332 ST9



CHINA RED

Code: U321 ST9



FLAMINGO PINK

Code: U363 ST9



TURQUOISE BLUE

Code: U633 ST9



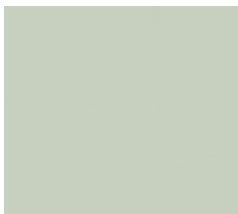
DELFT BLUE

Code: U525 ST9



DARK VIOLET

Code: U414 ST9



PISTACIO GREEN

Code: U608 ST9



LIME GREEN

Code: U630 ST9



LIGHT GREY

Code: U708 ST9



GRAPHITE GREY

Code: U961 ST2



Round Tuff Top® Premium table top in Flamingo Pink with a Gold Metallic Edging (page 21) on a Forza Small Square Dining Height Table Base (page 60) Powder Coated Gold (page 126)
Product code: PCBL7786GOLDBSSD001-P600DL25U363

STONE EFFECT DÉCOR COLOURS



WHITE LEVANTO
MARBLE

Code: F812 ST9



WHITE CARRARA
MARBLE

Code: F204 ST9



WHITE
CHROMIX

Code: F637 ST16



CHROMIX
SILVER

Code: F638 ST16



LIGHT
CONCRETE

Code: F274 ST9



LIGHT GREY
CHICAGO CONCRETE

Code: F186 ST9



LIGHT CEFALU
CONCRETE

Code: F823 ST10



GREY SIENA
MARBLE

Code: F095 ST87



FERRO
BRONZE

Code: F302 ST87



DARK GREY
CHICAGO CONCRETE

Code: F187 ST9



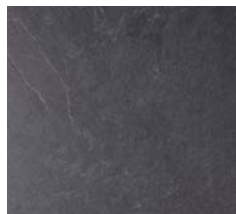
ANTHRACITE PIETRA
GRIGIA

Code: F205 ST9



ANTHRACITE METAL
ROCK

Code: F121 ST87



ANTHRACITE JURA
SLATE

Code: F242 ST10



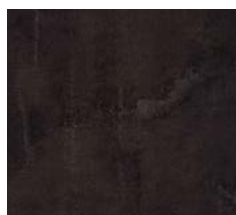
SILVER GREY METAL
SLATE

Code: F628 ST16



BLACK PIETRA
GRIGIA

Code: F206 ST9



BLACK GOLD METAL
SLATE

Code: F629 ST16



600mm Round Light Grey Chicago Concrete
Tuff Top® Premium MTO Top with Metallic
Champagne ABS edging
Product code: P600DL25F186CHA

EGGER DÉCORS



WOOD EFFECT DÉCOR COLOURS



WHITEWOOD

Code: H1122 ST22



CASCINA PINE

Code: H1401 ST22



NATURAL DAVOS OAK

Code: H3131 ST12



NATURAL MANDAL MAPLE

Code: H3840 ST9



GREY BARDOLINO OAK

Code: H1146 ST10



OAK BUTCHER BLOCK

Code: H193 ST12



NATURAL WILD OAK

Code: H1318 ST10



BRAMBERG PINE

Code: H1487 ST22



ELLMAU BEECH

Code: H1582 ST15



NATURAL LANCASTER OAK

Code: H3368 ST9



1600 x 900mm Rectangle Tuff Top® Premium tabletop in Dark Hunton Oak H2033
Product code: P1600900L25H2033



VERONA CHERRY

Code: H1615 ST9



NATURAL BROWN BRANSON ROBINIA

Code: H1251 ST19



NATURAL DIJON WALNUT

Code: H3734 ST9



SHOREWOOD

Code: H3090 ST22



GREY BROWN WHITERIVER OAK

Code: H1313 ST10



GREY NEBRASKA OAK

Code: H3332 ST10

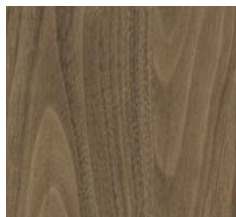


700mm Square Tuff Top® Premium table top in Black Brown Soarano Oak H1137
Product code: 700700LWEN



GREY SANTA FE OAK

Code: H1331 ST10



NATURAL CARINI
WALNUT

Code: H3710 ST12



TRUFFLE BROWN
DAVOS OAK

Code: H3133 ST12



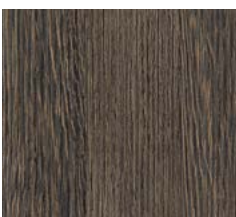
VINTAGE SANTA FE
OAK

Code: H1330 ST10



DARK HUNTON OAK

Code: H2033 ST10



MALI WENGÉ

Code: H3058 ST22



TOBACCO PACIFIC
WALNUT

Code: H3702 ST10



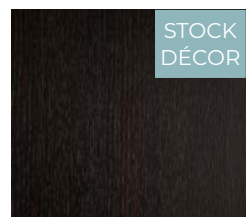
GOLDEN PATINA

Code: F411 ST20



ANTHRACITE
FINELINE METALLIC

Code: H3190 ST19



BLACK-BROWN
SORANO OAK

Code: H1137 ST12

STOCK
DÉCOR

FORMICA FUNDAMENTALS

BLOCK DÉCOR COLOURS

				
WHITE	SHEER WHITE	SIGNAL WHITE	DOVE	RN GREY
Code: 8100	Code: 6463	Code: 6464	Code: 8084	Code: 2301
				
LINEN	BUTTERMILK	SUNLIT YELLOW	BUCKTHORNE	ROSSO
Code: 8082	Code: 0527	Code: 5901	Code: 8077	Code: 6472
				
FUCHSIA	ORCHID	ROYAL BLUE	TOBAGO BLUE	POMME
Code: 8081	Code: 5346	Code: 8183	Code: 8079	Code: 8078
				
SILK GREY	QUICKSILVER	PLASTER GREY	COAL GREY	FLINT GREY
Code: 6466	Code: 8180	Code: 8085	Code: 8086	Code: 8087
				
HEMP	PLATINUM	PEWTER GREY	GRANITE GREY	JET BLACK
Code: 8033	Code: 8178	Code: 6632	Code: 6467	Code: 6468



STONE EFFECT DÉCOR COLOURS



AILSA

Code: 0197



GREY DOTS

Code: 6691



GYPSUM

Code: 8095



CEMENT

Code: 8094



CHARCOAL SPLATTER

Code: 0195

WOOD EFFECT DÉCOR COLOURS



PURE BEECH

Code: 8089



MOUNTAIN MAPLE

Code: 6683



SEN ASH

Code: 7617



SUMMER OAK

Code: 6688



CALM ASH

Code: 8088



BRUNETTE WALNUT

Code: 8092



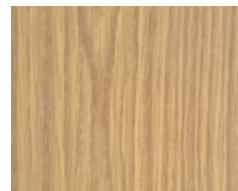
CLASSIC BEECH

Code: 6684



WARM CHERRY

Code: 8634



DURHAM OAK

Code: 0447



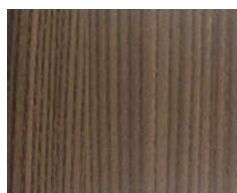
BIELLA WALNUT

Code: 6690



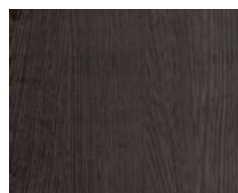
CLASSIC CHERRY

Code: 8090



PITCH WALNUT

Code: 8093



BATU WENGE

Code: 6685

SWATCH SAMPLES
ARE AVAILABLE FOR
EVERY TABLETOP
TYPE AND DÉCOR
THAT WE
OFFER



CONTRAST ABS EDGING

Contrast ABS edging offers an alternative finish to your top. We have 35 décors available through our catalogue, with hundreds more available through discussion with our Sales Team.

- Option to add an extra dimension to your tabletop
- 100's of variations to choose from
- 2mm thick impact and scratch resistant
- Easy To Clean

BLOCK EDGING COLOURS



TRAFFIC YELLOW
MINIPEARL

Code: 041.313



YELLOW GREEN
MINIPEARL

Code: 041.65



ATLANTIC
MINIPEARL

Code: 041.542



CHILLI RED
MINIPEARL

Code: 041.4007



BLACK
MINIPEARL

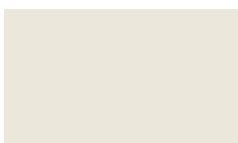
Code: 041.299



(On the left) 2 Strata Yellow Side Chairs (page 97) with a 700mm Square White Tuff Top® Premium table top (page 18) finished with a Traffic Yellow Minipearl edge on a Phoenix Large base (page 83)

(On the right) 2 Zest Bright Green side chairs (page 93) with a 700mm Round White Tuff Top® Premium table top (page 10) finished with a Yellow Green Minipearl edge on a Bistro Dining Height base (page 85)

PASTEL EDGING COLOURS



WHITE GREY
MINIPEARL

Code: U41.2445



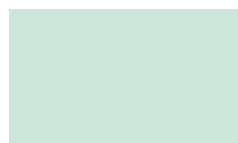
LIGHT VANILLA
MICROSTRUCTURE

Code: 04S.1015



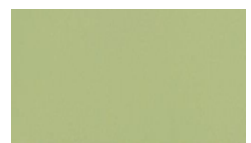
DUSTY PINK
MINIPEARL

Code: 041.4256



VELVET GREEN
MINIPEARL

Code: 041.607



AVOKADO
MICROSTRUCTURE

Code: 04S.6511



CORNERS

Available with Square or Radius Corners



Square Corner



50mm Radius Corner

3 Zest Red Side Chairs (page 93) with a 1200 x 600mm Alpine White Tuff Top® Premium Table top (page 14) with 50mm Radius Corners on a Danilo Twin Columned Dining Height Base (page 67)

METALLIC EDGING COLOURS



ALU CHAMPAGNE
BRUSHED

Code: 047.9252



ALU SILVER
BRUSHED

Code: 047.9230



ALU COPPER
BRUSHED

Code: 047.9258



ALU GOLD
BRUSHED

Code: 047.9259



ALU BRONZE
BRUSHED

Code: 047.9256



WOOD EFFECT EDGING COLOURS



SLICED ASH ACROSS
NATURAL SMOOTH

Code: 045.9762



REAL MULTIPLEX
SMOOTH

Code: 095.0770



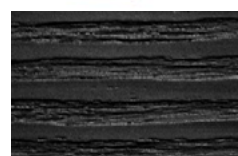
BARNWOOD
OXIDISED WOOD PORE

Code: 046.9586



SULAWESI MACASSAR
BROWN SMOOTH

Code: 045.7346



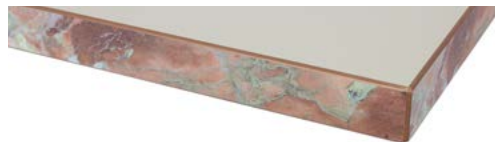
BLACK WOODEN
STRUCTURED

Code: 04F.2990

CONTRAST ABS EDGING

MADE TO ORDER

STONE EFFECT EDGING COLOURS



CARRARA MARBLE
SMOOTH

Code: 045.9746



MOSAIK CORFU
MINIPEARL

Code: 048.9975



ENGELSBERG
MARBLE MINIPEARL

Code: 048.8596



ANTHRACITE GRANITE
MINIPEARL

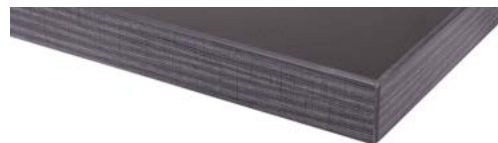
Code: 048.9868



BLACK MARBLE
MINIPEARL

Code: 048.8607

TEXTILE EFFECT EDGING COLOURS



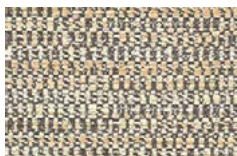
WEAVE SLATE GREY
MINIPEARL

Code: 048.8982



PLATINUM GREY
TWIST SMOOTH

Code: 045.9041



BRUXELLES
MINIPEARL

Code: 048.8972



TEXWOOD BLACK
SMOOTH

Code: 045.9008



MICROPIX NOIR
SMOOTH

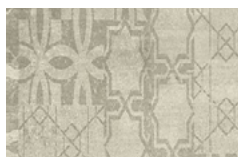
Code: 045.9615

PATTERNED EDGING COLOURS



TOUCH OF MADNESS
MINIPEARL

Code: 048.9599



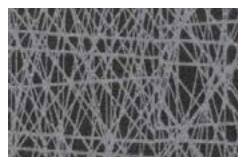
GRAPHIC CONCRETE
SMOOTH

Code: 045.9732



PLANE TREE
SMOOTH

Code: 045.7321



SPIRA GRAU
SMOOTH

Code: 045.9970



REPTILE
MINIPEARL

Code: 048.8751

BESPOKE EDGE PROFILES

WITH PAINTED EDGE

An alternative to ABS edging, why not complete your Bespoke Tuff Top® Premium tabletop with one of our 11 alternative painted profile edge options to add a dynamic and unique finishing touch to your tabletop. Your painted edge can be painted in a solid colour that best matches your chosen surface decor, painted in a contrast colour to compliment the surface décor, or finished as a lacquered polished edge. Contact our amazing sales team today to discuss your requirements.

SEE LATEST OPTIONS
ON OUR WEBSITE



45 DEGREE EDGE PROFILE



47 DEGREE EDGE PROFILE



ARISSED EDGE PROFILE



CONVEX EDGE PROFILE



FULL ROUND
EDGE PROFILE



INCUT EDGE
PROFILE



NEW EDGE -
EDGE PROFILE



PENCIL ROUND
EDGE PROFILE



PENCIL ROUND TOP AND
BOTTOM EDGE PROFILE



SQUARE EDGE
PROFILE



STEP AND ROUND
EDGE PROFILE

MADE TO
ORDER

TUFF TOP® ORIGINAL



Tuff Top® Original tabletops are the practical choice for any busy establishment. Budget considerations? Durable, easy to clean and maintain, these tabletops are ideal for a wide range of commercial environments.



1200 x 700mm Grey Nebraska Oak Tuff Top® Original top on a Phoenix Twin Dining height Table Base (page 83)

SWATCH SAMPLES
ARE AVAILABLE FOR
EVERY TABLETOP
TYPE AND DÉCOR
THAT WE
OFFER





Resilient to scratches
and heat resistant
to 90° C



FSC certified
MFC Core



Easy clean, wipeable
surface



5 year structural
warranty



2mm impact resistant
ABS edge as standard



Metal insert service

IN
STOCK &
MADE TO
ORDER

TUFF TOP® ORIGINAL

Heat resistant to 90 °C and edged in high quality 2mm impact resistant ABS edging, the Tuff Top® Original range is perfect for any busy canteen, breakout area, or commercial hospitality environment.




THICKNESS

Available as standard as a 25mm thickness






25MM

STOCKED SIZES (25MM)

TABLE SHAPE	SIZE
	600 x 600mm
	700 x 700mm
	800 x 800mm
	600mm diameter
	700mm diameter
	800mm diameter
	1000mm diameter (white only)
	1200mm diameter (white only)
	1000 X 600mm (white only)
	1200X 700mm
	1200 X 800mm
	1500 X 700mm (white only)

MADE TO ORDER SIZES

TABLE SHAPE	SIZE
	500 x 500mm
	750 x 750mm
	900 x 900mm
	900mm diameter
	1000mm diameter
	1200mm diameter
	700 X 600mm
	800 X 600mm
	900 X 600mm
	1000 X 500mm
	1000 x 600mm
	1100 X 700mm
	1200 X 600mm
	1200 X 750mm
	1400 X 600mm
	1400 X 700mm
	1400 X 800mm
	1400 X 1000mm
	1500 X 600mm
	1500 x 700mm
	1500 X 750mm
	1500 X 800mm
	1500 X 1000mm
	1600 X 600mm
	1600 X 700mm
	1600 X 800mm
	1600 X 1000mm
	1800 X 600mm
	1800 X 700mm
	1800 X 800mm
	1800 X 1000mm
	2000 X 800mm
	2000 X 1000mm



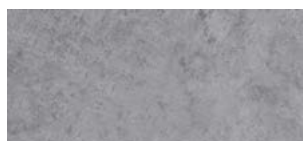
BEECH

Code: MBEE
Décor code: D381



BLACK

Code: MBLA
Décor code: U999



LIGHT GREY CHICAGO
CONCRETE

Code: MCON
Décor code: F186



GREY NEBRASKA OAK

Code: MNEB
Décor code: H3332



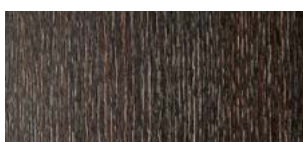
OAK

Code: MOAK
Décor code: H1334



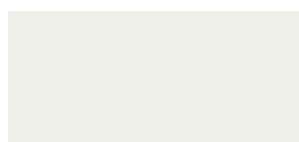
WALNUT

Code: MWAL
Décor code: H3734



WENGE

Code: MWEN
Décor code: H1137



WHITE

Code: MWHI
Décor code: W980

ULTRATOP® COMPACT LAMINATE



Our Ultratop® Compact Laminate Table tops offer an incredibly durable and modern solution to those venues looking for a sleek minimalist design that can withstand anything that your customers and Mother Nature herself can throw at them.

790mm Round Portoro Marble Ultratop®
Compact Laminate Tabletop (page 31)





Hard wearing surface can accommodate items with a temperature of up to 180 °C



5 year structural warranty



Easy Wipe clean and stain resistant surface – perfect for the current environment



Fixing groove system compatible with all 4 Star shaped table base spiders for ease of assembly



12mm slimline profile

IN STOCK

SUITABLE FOR BOTH INDOOR AND OUTDOOR USE



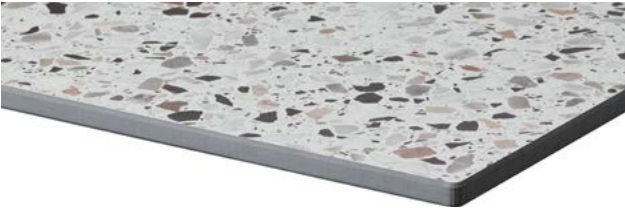
ULTRATOP® COMPACT LAMINATE

IN STOCK

At only 12mm thick these tops have an extremely slim profile, yet with our 10 stylish colourways they will also lend themselves brilliantly to a large range of interior and exterior themes. Stain resistant, easy to clean and weatherproof, our compact laminate tabletops are suitable for any dining or drinking area, inside or out.

THICKNESS



Available as standard as a 12mm thickness



12MM

Find out how the fixing groove system works by watching our video.



TABLE SHAPE	SIZE (12MM)
	590 x 590mm
	690 x 690mm
	790 x 790mm
	590mm diameter
	690mm diameter
	790mm diameter



Fixing groove system



690mm Round Golden Rust Ultratop® Compact Laminate Tabletop with Zest Pearl Grey Side Chairs (page 93)



590mm Round White Marble Ultratop® on a Madrid Flip Top Dining height Base (page 73)
Product code: 590DCLWHIMAR-MADFTD0001

IN STOCK

ULTRATOP® DÉCORS

DÉCOR COLOURS



WHITE

Code: CLWHI



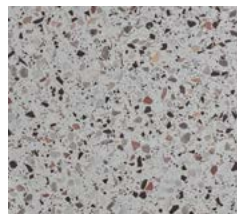
WHITE MARBLE

Code: CLWHIMAR



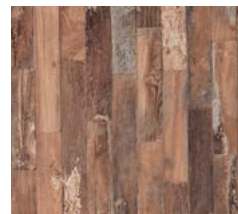
RUSTIC CONCRETE

Code: CLRUSCON



TERAZZO

Code: CLTER



VINTAGE WOOD

Code: CLVINWOO



GOLDEN RUST

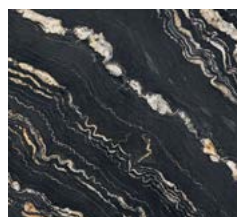
Code: CLGOLRUS

METALLIC
ANTHRACITE

Code: CLMETANT

MARQUINA
MARBLE

Code: CLMARMAR

PORTORO
MARBLE

Code: CLPORMAR



BLACK

Code: CLBLA



690mm Square Metallic Anthracite Ultratop® Compact
Laminate Tabletop with a Continental 4 Leg Base
(page 77) and 2 Paris Armchairs (page 103)
Product code: CON4-690690CLMETANT-PARISARM2

SOLID WOOD TABLETOPS



Made To Order Solid Wood tabletops are the perfect complement to those venues looking for high quality wooden tops to complete their desired design theme.

1200 x 700mm Wenge Solid Wood top on a Phoenix Twin Dining height Table Base (page 83)

SWATCH SAMPLES
ARE AVAILABLE FOR
EVERY TABLETOP
TYPE AND DÉCOR
THAT WE
OFFER





Durable construction, with Strengthening bars to ensure the natural wood does not lose its shape



Can be stained in your choice of colour



Solid wood – so can be refinished in the future



PU lacquer finish for stain resistance and easy cleaning



5 year structural warranty



Bespoke edge shape


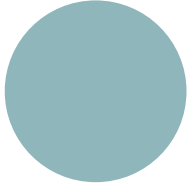
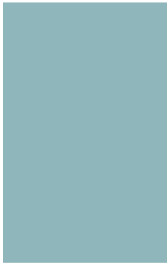
MADE TO
ORDER

SOLID WOOD TABLETOPS

Available in 25mm, 34mm or 50mm, our Solid Wood tops will add a touch of class to any pub, restaurant, café, club, or hotel, and can even be colour stained upon request to match any pre-existing stain colours that you may already have. Available 3 different thicknesses and in 27 different sizes (with many more sizes available though discussion with our sales team), there's a solid wood top to suit any requirement.



Bistro Dining height base (page 85) with a 700mm Round Wenge Solid Wood top
Product code: BIS4D001-700DSAWEN

TABLE SHAPE	SIZE
	500 x 500mm
	600 x 600mm
	700 x 700mm
	750 x 750mm
	800 x 800mm
	900 x 900mm
	600mm diameter
	700mm diameter
	800mm diameter
	900mm diameter
	1000mm diameter
	1200mm diameter
	1000 x 500mm
	1000 x 600mm
	1100 x 700mm
	1200 x 600mm
	1200 x 700mm
	1200 x 750mm
	1200 x 800mm
	1400 x 700mm
	1500 x 700mm
	1500 x 750mm
	1500 x 800mm
	1600 x 800mm
	1800 x 700mm
	1800 x 800mm
	2000 x 800mm





OAK



GOLDEN OAK



MAHOGANY



WENGÉ

SOLID WOOD TABLETOPS



RAW



CLEAR LACQUER



LIMED ASH

AVAILABLE IN
SQUARE, ROUND
& RECTANGULAR
SHAPES



Bistro Dining height base (page 85) with a 700mm Round Wenge Solid Wood top and 2 Paris Armchairs (page 103)
Product Code: BIS4D001-700DSAWEN-PARISARM2

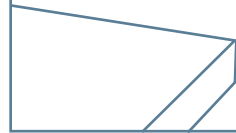


Forza Small Round Dining Height Base (page 62)
with 700mm Round Wenge Solid Wood Top

EDGE PROFILES

Finished as standard with a square edge, why not complete your Solid Wood tabletop with one of our 10 alternative profile edge options to add a dynamic and unique finishing touch. Create a stunning and eye catching design that serves as a talking point for all your customers.

SEE LATEST OPTIONS
ON OUR WEBSITE



The square edge is the standard profile, or choose from one of our 10 alternative edges below:



SQUARE EDGE



ARISSED EDGE



PENCIL ROUND EDGE



PENCIL ROUND
TOP AND BOTTOM EDGE



FULL ROUND EDGE



CONVEX EDGE



STEP AND ROUND EDGE



INCUT EDGE



NEW EDGE



47 DEGREE EDGE



45 DEGREE EDGE

CALL US TODAY



RUSTIC WOOD TABLETOPS



Made To Order Rustic Wood tabletops are the perfect complement to those venues looking for tops where the natural characteristics of the wood are appreciated as a truly charismatic feature. 34mm thick and available in 9 different sizes (with many more sizes available through discussion with our sales team), our Rustic Wood tops are perfect for those venues looking to create the Industrial vibe.

Our Rustic Wood Tabletops are made to embrace the natural characteristics of the real wood that they are made from. Each table is unique, with the knots and grooves of the wood still present as a feature, providing you with a stunning finish. If you prefer a smooth natural wood finish then please see our Solid Wood range (page 32).

SWATCH SAMPLES
ARE AVAILABLE FOR
EVERY TABLETOP
TYPE AND DÉCOR
THAT WE
OFFER





Durable construction, with Strengthening bars to ensure the natural wood does not lose its shape



Can be stained in your choice of colour



Solid wood – so can be refinished in the future



PU lacquer finish for stain resistance and easy cleaning



5 year structural warranty for peace of mind




MADE TO
ORDER

700mm Square 34mm Thick Rainbow Pine Rustic Wood
Top with 4 Hairpin legs (page 79)

RUSTIC WOOD TABLETOPS

34mm thick and available in 9 different sizes (with many more sizes available through discussion with our sales team), our Rustic Wood tops are perfect for those venues looking to create the Industrial vibe.



TABLE SHAPE	SIZE
	600mm Square
	700mm Square
	800mm Square
	600mm Round
	700mm Round
	800mm Round
	1100 x 700mm
	1200 x 700mm
	1200 x 800mm

Other bespoke sizes are available.



BARREL



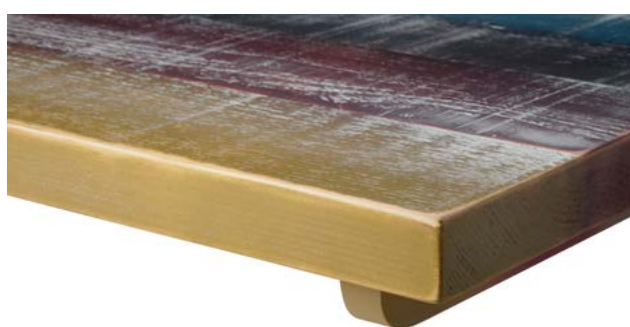
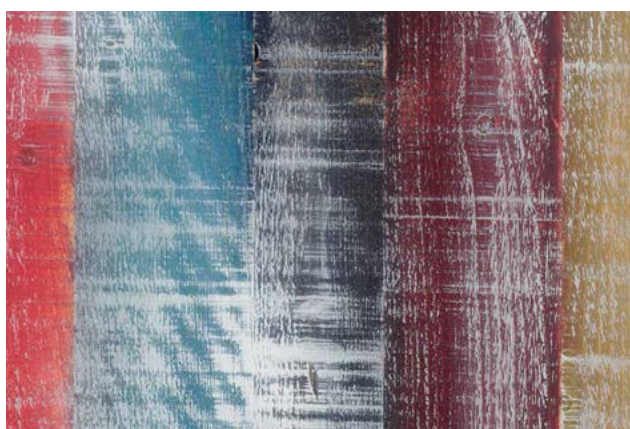
DRIFTWOOD



INDUSTRIAL PINE



JETTY



RAINBOW PINE



STRIPPED PINE

WERZALIT TABLETOPS



The Werzalit brand has been established for over 90 years and are one of our top choices for outdoor commercial tabletops. Werzalit Outdoor tabletops are the standard for anyone looking for weatherproof and UV resistant dining tables. We offer 50 different decors (6 from stock) and 8 different sizes, meaning you can achieve any look and meet any contract seating criteria that your commercial hospitality venue may have. Add to that our 5 Year structural warranty, and you'll see that the Werzalit Outdoor tabletops are brilliant for any pub, commercial hospitality venue, canteen or breakout room where a quality top suitable for any environment, indoors or outdoors, is needed.

SUITABLE FOR
BOTH INDOOR AND
OUTDOOR USE





Scratch, and impact resistant, heat resistant to 180 °C making them a highly durable option for busy environments



Easy clean, wipeable surface



Weatherproof and UV resistant to suit any environment, outdoors and indoors



FSC Certified, with a 100% recycled core



5 year warranty for peace of mind



Molded Metal Edging available



Metal insert service

werzalit®




since 1923.

Werzalit 800mm Square
White Stocked tops on
Madrid Flip Top Bases (page
73) with Red and Anthracite
Strata chairs (page 97)

IN
STOCK &
MADE TO
ORDER

STOCK TABLETOPS

We hold stock of 6 of the best selling decors, available in 7 Sizes for Same Day Despatch.*

TABLE SHAPE	SIZE (27MM DEPTH)
	600mm Square
	700mm Square
	800mm Square
	600mm Round
	700mm Round
	800mm Round
	1100 x 700mm



WHITE

Product code: WZ001

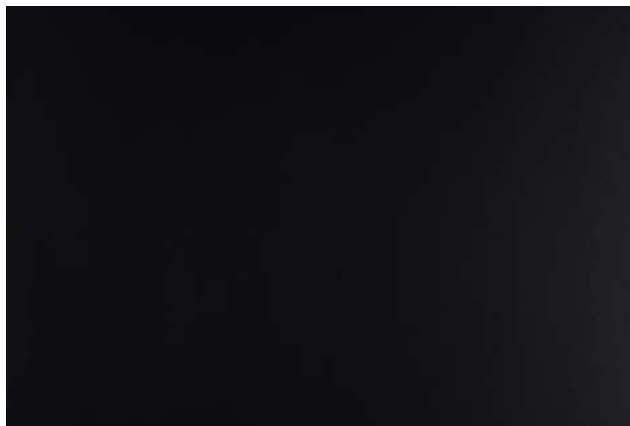


CITY

Product code: WZ029

werzalit®
since 1923.

IN STOCK



BLACK

Product code: WZ055



ARIZONA

Product code: WZ119



MARBLE DE GENES

Product code: WZ121



PONDEROSA GREY




Product code: WZ179



TOP 30 DÉCORS



Werzalit's Top 30 Décors are available through our Made To Order Bespoke service on a 3 to 4 week lead time (unless otherwise stated).

TABLE SHAPE	SIZE	LEAD TIME
	600mm Square	3 to 4 weeks
	700mm Square	
	800mm Square	
	600mm Round	3 to 4 weeks
	700mm Round	
	800mm Round	4 to 6 weeks
	1100 x 700mm	4 to 6 weeks
	1200 x 800mm	



WHITE

Code: WZ001



CITY

Code: WZ029



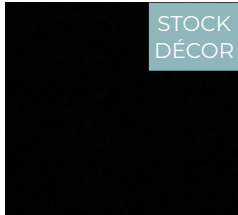
COLORADO

Code: WZ033



TRAVERTIN

Code: WZ034



BLACK

Code: WZ055



ALU

Code: WZ056



INDIANA

Code: WZ057



PALISSADE GREY

Code: WZ065



ANTHRACITE

Code: WZ084

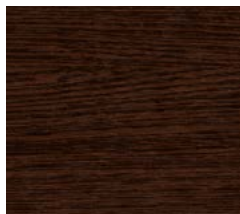


PALISSADE BOIS

Code: WZ096

werzalit®
since 1923.

MADE TO
ORDER



WENGE

Code: WZ103



ARIZONA

Code: WZ119



MARBLE DE GENES

Code: WZ121



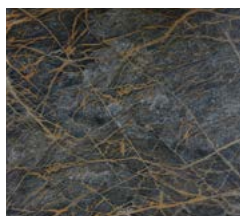
EX WORKS

Code: WZ122



PALISSADE WHITE

Code: WZ150



MARBLE SIENNA

Code: WZ174



PONDEROSA WHITE

Code: WZ178



PONDEROSA GREY

Code: WZ179



MARBLE ALMERIA

Code: WZ209



MARBLE MARQUINA

Code: WZ210



MONTPELLIER

Code: WZ214



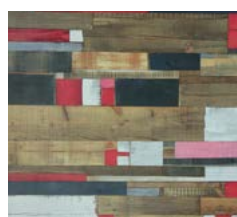
RUSTBROWN

Code: WZ223



KROMY ROUGE

Code: WZ261



KBANA ROUGE

Code: WZ271



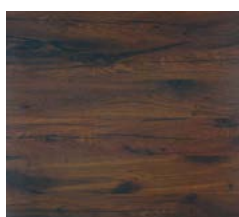
FINDUS

Code: WZ295



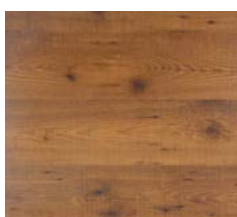
FINDUS GREY

Code: WZ296



OAK ANTIC

Code: WZ316



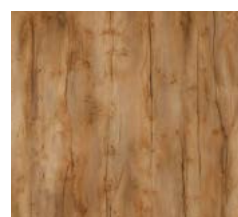
PINIE

Code: WZ321



KANSAS

Code: WZ508






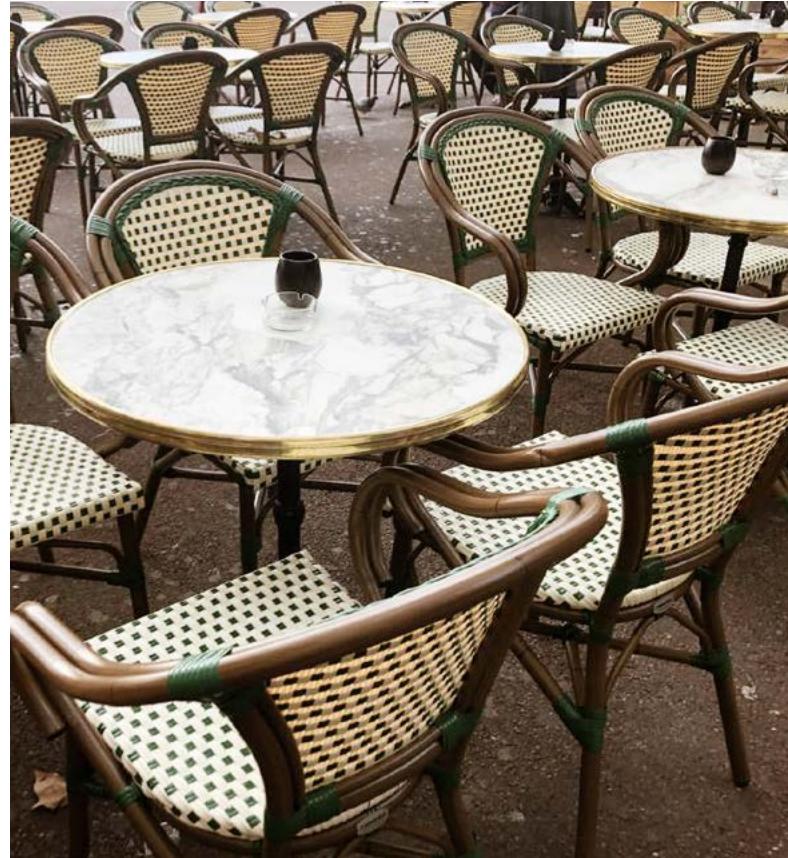
NEW BOSTON

Code: WZ520

ADDITIONAL DÉCORS

We offer an additional 20 décors through our Made To Order Bespoke Werzalit service, available in 8 Sizes on a 4 to 6 week lead time.

TABLE SHAPE	SIZE
	600mm Square
	700mm Square
	800mm Square
	600mm Round
	700mm Round
	800mm Round
	1100 x 700mm
	1200 x 800mm



BEECH

Code: WZ019



TEMPERA SILVER

Code: WZ046



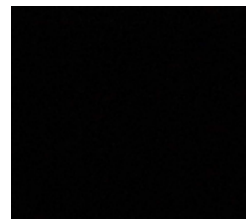
FACTORY

Code: WZ083



PUNTINELLA

Code: WZ112



WALNUSS

Code: WZ116



MARBLE SICILE

Code: WZ144



OAK MILLED

Code: WZ170



KBANA TAUPE

Code: WZ211



PLANK BLUE

Code: WZ264



PLANK RED

Code: WZ266

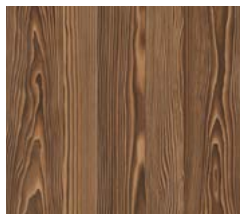
werzalit®
since 1923.

MADE TO
ORDER



LAGOS

Code: WZ504



ENEA

Code: WZ505



VERONA

Code: WZ506



SHANIKO

Code: WZ509



CHADNA

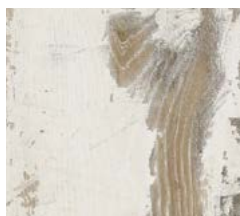
Code: WZ510

NEW DÉCORS FOR 2023



NAXOS

Code: WZ521



SYLVA

Code: WZ522



AZRAK

Code: WZ523



TAIGA

Code: WZ524



THOR

Code: WZ525



Why not complete your Werzalit bespoke table top with a Moulded metal edging ring option. Available in either real Brass or Stainless Steel, the moulded metal edging is available on any 600mm or 700mm Round Tabletops within our Top 30 or Additional Décors range.

