



SHELBY



ELISE



SWAY



Performance
Posture
Professional

For any office worker that spends a significant part of their day at their desk, comfort is essential. Ergonomics is all about enhancing your performance through good design whilst also keeping you safe and healthy, and the new Triple P range of performance chairs have been designed to best support the human body, focusing on posture, comfort, and support.

Available from - Merlin Industrial Products Ltd - 0800 0418 650 - info@merlin-industrial.co.uk

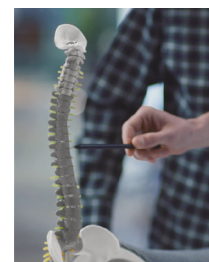
Performance
Posture
Professional



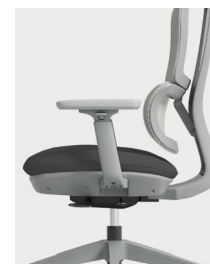
THE YOGA BRIDGE POSE



LATERAL MOVEMENT



ADJUSTABLE LUMBAR



SEAT TILT



3D ARMS

SHELBY

Without headrest

SHL300K2

-G

Grey frame
& mesh

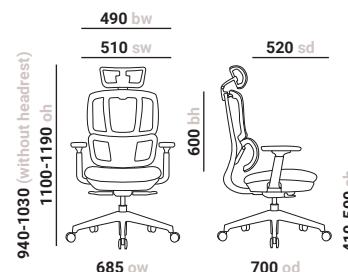
-K

Black frame
& mesh

With headrest

SHL301K2

Inspired by the bridge pose of yoga, the Shelby Bifma certified ergonomic chair ingeniously embraces a 3D dynamic dual-back to relieve the pressure felt by your lumbar region. Available in black or grey and with an optional headrest, Shelby makes activity a part of your working routine.



Gas lift adjustment

Raises and lowers the height of the seat to fit the user.



Seat depth adjustment

Seat slides forwards and backwards to match the users size.



Adjustable lumbar support

Dynamic lumbar adjustment to support the back in all seating positions.



Synchro seat & back tilt

Seat and back move in a synchronised motion. Lockable in multiple positions.

Performance
Posture
Professional



SPINE FRIENDLY DESIGN



HEADREST



3D ARMS



SEAT TILT

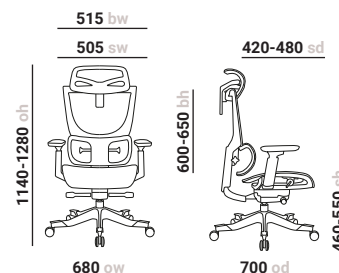


ADJUSTABLE LUMBAR

ELISE

Black mesh & black frame
ELS300K2-K

Remarkable for style, comfort, and support, the Elise performance task chair has a breathable, supple all-mesh seat and back to promotes a more comfortable and productive work day, with a built-in lumbar mechanism that offers enhanced comfort and an integrated headrest for constant support.



Gas lift adjustment
Raises and lowers the height of the seat to fit the user.



Adjustable lumbar support
Dynamic lumbar adjustment to support the back in all seating positions.



Synchro seat & back tilt
Seat and back move in a synchronised motion. Lockable in multiple positions.



Back height adjustment
Allows the seat back to be higher and lowered to suit.



Seat depth adjustment
Seat slides forwards and backwards to match the users size.



Weight tension control
Adjustable to the users weight for controlled smooth reclining action.

Performance
Posture
Professional



INSPIRED BY FLYING BIRD WINGS



3D ARMS



DYNAMIC MECHANISM



LATERAL MOVEMENT



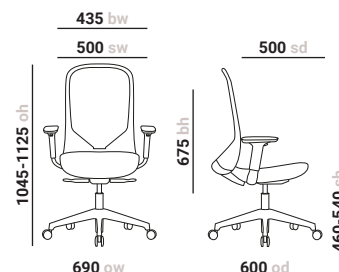
V-SHAPED BACK

SWAY

Black mesh & grey frame

SWY300K2-G

The Sway operator chair provides harmony between form and function. Sway is all about encouraging movement, with a unique dynamic mechanism that allows for side-to-side movement, which helps users with twisting into unnatural positions to grab something just out of reach.



Gas lift adjustment
Raises and lowers the height of the seat to fit the user.



Synchro seat & back tilt
Seat and back move in a synchronised motion. Lockable in multiple positions.

Available from - Merlin Industrial Products Ltd - 0800 0418 650 - info@merlin-industrial.co.uk



Available from - Merlin Industrial Products Ltd - 0800 0418 650 - info@merlin-industrial.co.uk