

# ECO TELESTOPPER™

## STIRRUP PUMP INSTRUCTIONS

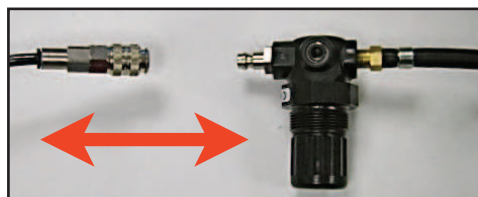
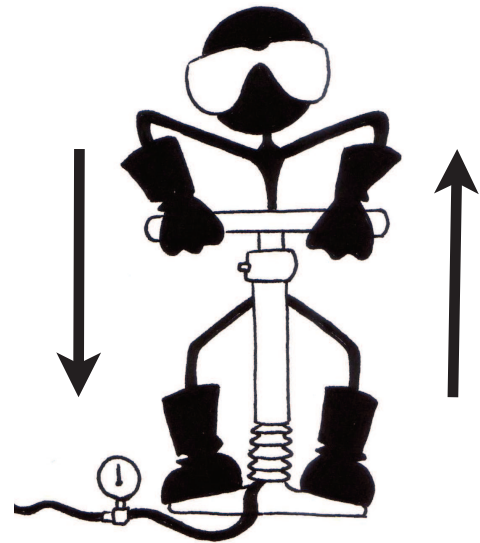
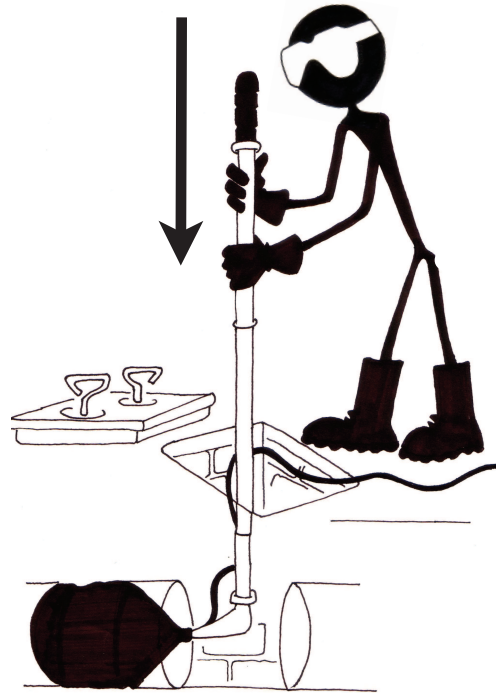
### STEP ONE

POSITION THE STIRRUP PUMP ON A FLAT SURFACE A SAFE DISTANCE FROM THE SPILL (AIR HOSE HAS MAX 6 METER RANGE). LIFT THE DRAIN OR MANHOLE COVER. INSERT THE INDUSTRIAL TELESTOPPER™ FIRMLY INTO THE DRAIN OR SEWER BLOCKING THE OUTWARD FLOW.

### STEP TWO

RETURN TO THE STIRRUP PUMP, POSITION ONE FOOT FIRMLY ON TOP OF EITHER SIDE OF THE BASE AND BEGIN TO PUMP THE HANDLE UP AND DOWN. CONTINUE UNTIL RESISTANCE TO PUMPING IS FELT (AT THIS POINT THE REGULATOR'S SET PRESSURE HAS BEEN REACHED\*\*) THIS ACTION WILL INFLATE THE BLADDER, LOCKING IT IN PLACE, SEALING THE PIPE TO ENSURE THAT THE SPILL REMAINS CONTAINED ON-SITE IN THE DRAIN.

**IMPORTANT : IMMEDIATELY DISCONNECT PUMP AT SNAP CLIP CONNECTOR TO MAINTAIN PRESSURE.**



### STEP THREE

REPLACE THE DRAIN OR MANHOLE COVER, PLACE A WARNING TRIANGLE OR HAZARD WARNING BARRIER AROUND THE AREA. YOU NOW HAVE TIME TO ARRANGE SAFE EXTRACTION OF THE SPILL FROM THE DRAIN. THE EQUIPMENT CAN NOW BE CLEANED/SANITIZED READY FOR FUTURE RE-DEPLOYMENT WHEN REQUIRED.

**\*\* WARNING! Do Not physically force the pump handle down after set pressure is reached. This may cause over inflation. Do not adjust the regulator factory setting.**

**\* Environmental Innovations Limited always recommend the use of protective goggles and gloves (hard-hat if required) whenever using our products. Please also comply with all relevant site H&S Procedures and Environment Agency PPGs**