



SPACIA

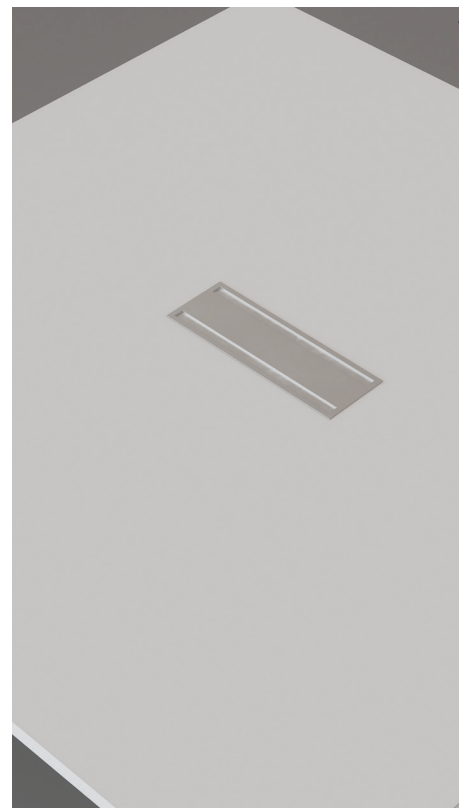
Spacia conference table is completely created from Structorex® panel for a very natural aspect. Designed in wide dimensions, Spacia leaves enough space to users. The section by tab between the top and the leg gives the Spacia table a wellkept aspect.

buronomic
FABRICANT FRANÇAIS

Available from Merlin Industrial Products - 01752 690622 - sales@mipl.uk



Available from Merlin Industrial Products - 01752 690622 - sales@mipl.uk



1. Cable routing hatch with integrated shelf for the installation of a Data power unit and management of electrification. 2. Assembly leg and top with 45° section by tab.

Technical description

Structure made of Structorex®, 25 mm thickness. 2 mm ABS edging.

Cable routing hatch with integrated shelf for the installation of a Data power unit and management of electrification.

Assembly leg and top with 45° section by tab.

Extremities legs in Structorex® panel, 25 mm thickness, 2 mm ABS edging.

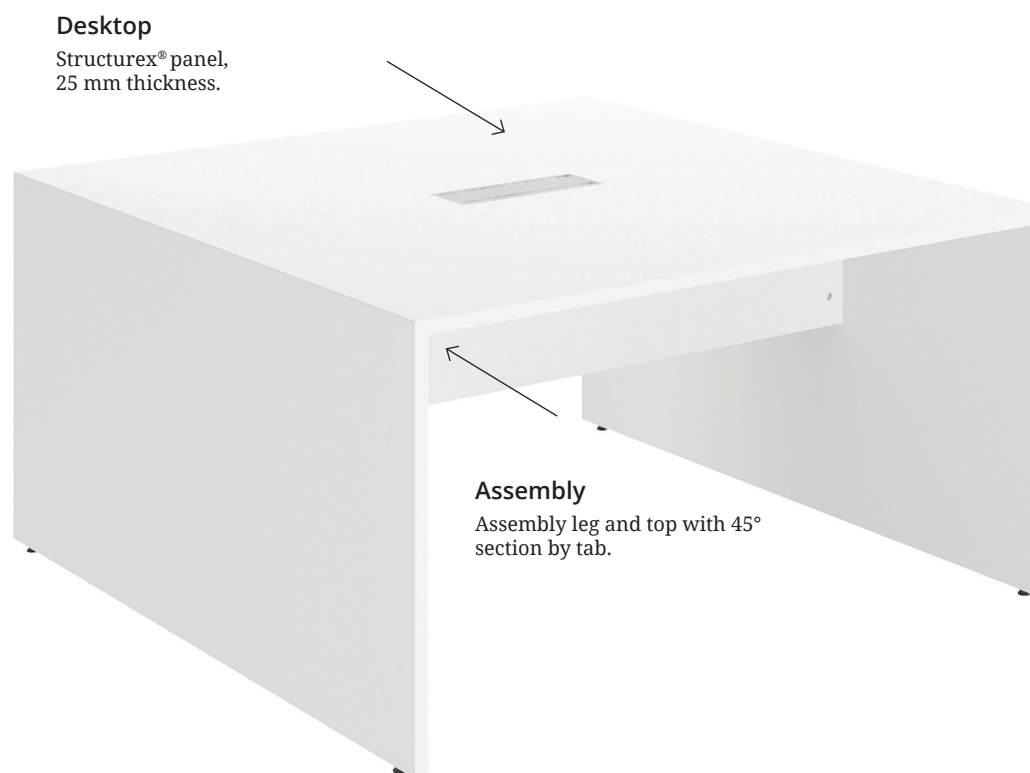
Recessed leg to facilitate the transition from one workstation to another.

Intermediate leg established with 2 Nitech® 38 mm panels interposed with 2 Structorex® panels equipped with cable port to the cable management in the leg.

The adjustable screw jacks on the legs allow up to 10 mm adjustment to compensate any defects in the floor .

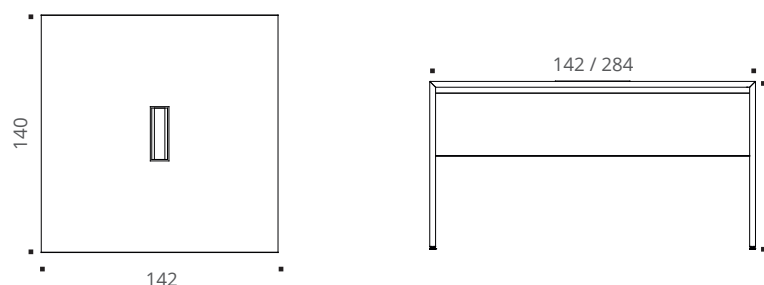
Structural Structorex® modesty panel, 16 mm thickness, 2 mm ABS edging.

Reinforcement beam metal epoxy finish.

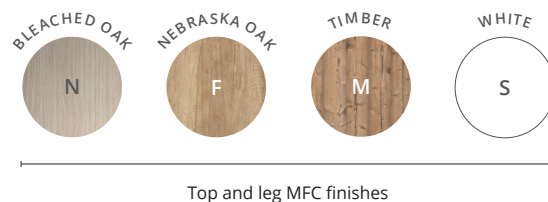



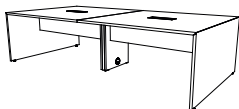

Desktop
Structorex® panel,
25 mm thickness.

Assembly
Assembly leg and top with 45°
section by tab.



Finishes



		Dimensions in cm	Ref.	+Finish*	Price ex.VAT
Square table		D 140 / H 72 / L 142	BZ133	+ <input type="text"/>	£ 675
Rectangular table		D 140 / H 72 / L 284	BZ143	+ <input type="text"/>	£ 1339
Extension for rectangular table		D 140 / H 72 / L 144	BZ153	+ <input type="text"/>	£ 634

**Complete the reference with the chosen finish. All our mentioned finishes are to be considered as decoration and imitation finishes.
Ex : square table, Timber MFC finish leg and top = BZ133 +*