

# Attached Lid Containers

## Totebox ALCs

No container protects your products like Totebox Attached Lid Containers. ALCs stack with lids closed, protecting contents from knocks, theft and rain.

For tamper evident security, the hinged lid inhibits theft when fitted with a security seal at both ends.

Strong and impact resistant, Toteboxes typically stack seven high carrying a 35Kg unit load and nest by up to 78% to save valuable space on return transport.



A Totebox Original Product with a 2-year guarantee



Made by Totebox in the UK

## 6 litre ALC



Ref:	10010
Ext dim:	300 x 200 x 190 mm
Int dim:	240 x 160 x 153 mm
Nested height:	75 mm
Weight:	0.8 Kg
Colour:	

## 20 litre ALC



Ref:	10020
Ext dim:	400 x 300 x 264 mm
Int dim:	325 x 246 x 222 mm
Nested height:	100 mm
Weight:	1.65 Kg
Colour options:	

Accessories include security seal & label cover

## 25 litre ALC



Ref:	10025
Ext dim:	400 x 300 x 306 mm
Int dim:	321 x 244 x 282 mm
Nested height:	100 mm
Weight:	1.87 Kg
Colour options:	

Accessories include security seal & label cover

## 40 litre Original Totebox



Ref:	10040
Ext dim:	600 x 400 x 250 mm
Int dim:	515 x 343 x 215 mm
Nested height:	85 mm
Weight:	2.8 Kg
Other colour options:	

Accessories include security seal and wheeled dolly

## 54 litre Original Totebox



Ref:	10A5B
Ext dim:	600 x 400 x 320 mm
Int dim:	508 x 335 x 285 mm
Nested height:	85 mm
Weight:	3.2 Kg
Other colour options:	

Accessories include label cover, security seal and wheeled dolly

## 64 litre Original Totebox



Ref:	10A6B
Ext dim:	600 x 400 x 365 mm
Int dim:	501 x 328 x 330 mm
Nested height:	85 mm
Weight:	3.4 Kg
Other colour options:	

Accessories include label cover, security seal and wheeled dolly

## 80 litre Original Totebox



Ref:	10083
Ext dim:	710 x 460 x 368 mm
Int dim:	597 x 374 x 330 mm
Nested height:	85 mm
Weight:	4 Kg
Other colour options:	

Accessories include label cover, security seal and wheeled dolly

## 135 litre ALC



Ref:	AT337104
Ext dim:	1125 x 480 x 360 mm
Int dim:	1000 x 360 x 340 mm
Nested height:	85 mm
Weight:	6.9 Kg
Colour:	

Accessories include security seals

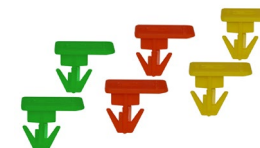
## 160 litre ALC



Ref:	AT336104
Ext dim:	675 x 575 x 615 mm
Int dim:	560 x 430 x 540 mm
Nested height:	90 mm
Weight:	8 Kg
Colour:	

Accessories include security seals

## Security Seals



Tamper-evident security seals  
Two seals required per container

Ref: 00701TM  
Standard seals (pack of 1,000)  
Colour options:



Ref: 702  
Green randomly numbered seals for additional security (pack of 1,000)

## Label holder cover



Clear ALC label holder covers  
Securely retain drop-in labels

Ref: R00473  
Fits 10A5B (54 litre ALC) & 10A6B (64 litre ALC)

Ref: R00475  
Fits 10083 (80 litre ALC)

Ref: R00477  
Fits AT64 models

Ref: R00478  
Fits AT43 models

# Attached Lid Containers

## 48 litre ALC



Ref: AT642604

Ext dim: 600 x 400 x 264 mm

Int dim: 530 x 353 x 240 mm

Nested height: 108 mm

Weight: 3 Kg

Colour:



Accessories include security seal, label cover and wheeled dolly

## 54 litre ALC



Ref: AT643104

Ext dim: 600 x 400 x 306 mm

Int dim: 514 x 350 x 281 mm

Nested height: 108 mm

Weight: 3.2 Kg

Colour:



Accessories include security seal, label cover and wheeled dolly

## 65 litre ALC



Ref: AT643604

Ext dim: 600 x 400 x 365 mm

Int dim: 508 x 346 x 340 mm

Nested height: 108 mm

Weight: 3.5 Kg

Colour:



Accessories include security seal, label cover and wheeled dolly

## 70 litre ALC



Ref: AT644004

Ext dim: 600 x 400 x 400 mm

Int dim: 521 x 343 x 375 mm

Nested height: 108 mm

Weight: 3.7 Kg

Colour:



Accessories include security seal, label cover and wheeled dolly

## 60 litre ALC General Purpose



Ref: TBOXALCGP60BLK

Ext dim: 600 x 400 x 320 mm

Int dim: 540 x 367 x 300 mm

Nested height: 85 mm

Weight: 3.0 Kg

Colour:



Accessories include security seal and wheeled dolly



Totebox manufacture our famous Original Totebox attached-lid containers here in the UK.

We've updated the range with the introduction of three new models providing users with a more ergonomic handhold, improved security and smooth sides for printing your logo and contact details.

# Euro Stacking Containers


## Euro Stacking Containers

Available in both solid and ventilated formats, Euro stacking containers are ideal for a wide variety of industrial storage and handling applications.

All models inter-stack to form compact handling units. 400x300mm models stack 2-up (side-by-side) on 600x400s, etc.

Ventilated models promote airflow in fridges & freezers, which helps the contents reach the desired temperature quickly.

Black models are manufactured using 100% recycled plastic.

 A Totebox Original Product (with a 2-year guarantee)



## 2 litre Solid Euro Stacker



Ref:	TBOX2111
Ext dim:	200 x 150 x 118 mm
Int dim:	156 x 107 x 114 mm
Weight:	0.3 Kg
Colour options:	   
Stacks 2-up (side by side) on 300 x 200mm Euro Stacker	

## 5 litre Solid Euro Stacker



Ref:	TBOX3211
Ext dim:	300 x 200 x 118 mm
Int dim:	255 x 155 x 115 mm
Weight:	0.4 Kg
Colour options:	   
Stacks 2-up (side by side) on 400 x 300mm Euro Stackers	

## 6 litre Solid Euro Stacker



Ref:	TBOX4370
Ext dim:	400 x 300 x 70 mm
Int dim:	355 x 255 x 64mm
Weight:	0.6 Kg
Colour:	
Stacks 2-up (side by side) on 600 x 400mm Euro Stackers	
Accessories include lid	

## 10 litre Solid Euro Stacker



Ref:	TBOX4311
Ext dim:	400 x 300 x 118 mm
Int dim:	355 x 255 x 115 mm
Weight:	0.75 Kg
Colour options:	   
Stacks 2-up (side by side) on 600 x 400mm Euro Stackers	
Accessories include lid	

## 15 litre Solid Euro Stacker



Ref:	TBOX4316
Ext dim:	400 x 300 x 175 mm
Int dim:	355 x 255 x 171 mm
Weight:	1 Kg
Colour options:	   
Stacks 2-up (side by side) on 600 x 400mm Euro Stackers	
Accessories include lid	

## 20 litre Solid Euro Stacker



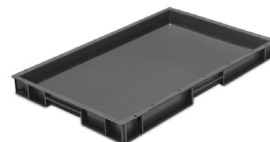
Ref:	TBOX4322
Ext dim:	400 x 300 x 230 mm
Int dim:	355 x 255 x 228mm
Weight:	1.2 Kg
Colour options:	   
Stacks 2-up (side by side) on 600 x 400mm Euro Stackers	
Accessories include lid	

## 30 litre Solid Euro Stacker



Ref:	TBOX4332
Ext dim:	400 x 300 x 320 mm
Int dim:	355 x 255 x 300 mm
Weight:	1.5 Kg
Colour:	
Stacks 2-up (side by side) on 600 x 400mm Euro Stackers	
Accessories include lid	

## 8 litre Solid Euro Stacker



Ref:	TBOX6450
Ext dim:	600 x 400 x 50 mm
Int dim:	555 x 355 x 40 mm
Weight:	1.1 Kg
Colour:	
Stacks 2-up (side by side) on 800 x 600mm Euro Stackers	
Accessories include lid and wheeled dolly	

## 12 litre Solid Euro Stacker



Ref:	TBOX6473
Ext dim:	600 x 400 x 73 mm
Int dim:	555 x 355 x 62 mm
Weight:	1.3 Kg
Colour:	
Stacks 2-up (side by side) on 800 x 600mm Euro Stackers	
Accessories include lid and wheeled dolly	

## 21 litre Solid Euro Stacker



Ref:	TBOX6411
Ext dim:	600 x 400 x 118 mm
Int dim:	555 x 355 x 108 mm
Weight:	1.5 Kg
Colour options:	   
Stacks 2-up (side by side) on 800 x 600mm Euro Stackers.	
Accessories include lid and wheeled dolly	

## 28 litre Solid Euro Stacker



Ref:	TBOX6415
Ext dim:	600 x 400 x 150 mm
Int dim:	555 x 355 x 139 mm
Weight:	1.75 Kg
Colour options:	
Stacks 2-up (side by side) on 800 x 600mm Euro Stackers.	
Accessories include lid and wheeled dolly	

# Euro Stacking Containers

## 30 litre Solid Euro Stacker



Ref:	TBOX6416
Ext dim:	600 x 400 x 175 mm
Int dim:	555 x 355 x 158 mm
Weight:	2 Kg

Colour options:



Stacks 2-up (side by side) on 800 x 600mm Euro Stackers.

Accessories include lid and wheeled dolly

## 42 litre Solid Euro Stacker



Ref:	TBOX6422
Ext dim:	600 x 400 x 230 mm
Int dim:	555 x 355 x 215 mm
Weight:	2.3 Kg

Colour options:



Stacks 2-up (side by side) on 800 x 600mm Euro Stackers.

Accessories include lid and wheeled dolly

## 42 litre with Open Handles



Ref:	TBOX6422OH
Ext dim:	600 x 400 x 230 mm
Int dim:	555 x 355 x 215 mm
Weight:	2.3 Kg

Colour options:



Stacks 2-up (side by side) on 800 x 600mm Euro Stackers.

Accessories include lid and wheeled dolly

## 54 litre Solid Euro Stacker



Ref:	TBOX6428
Ext dim:	600 x 400 x 290 mm
Int dim:	555 x 355 x 277 mm
Weight:	2.7 Kg

Colour options:



Stacks 2-up (side by side) on 800 x 600mm Euro Stackers.

Accessories include lid and wheeled dolly

## 63 litre with Open Handles



Ref:	TBOX6433
Ext dim:	600 x 400 x 340 mm
Int dim:	555 x 355 x 325 mm
Weight:	2.8 Kg

Colour options:



Stacks 2-up (side by side) on 800 x 600mm Euro Stackers.

Accessories include lid and wheeled dolly

## 80 litre with Open Handles



Ref:	TBOX6444
Ext dim:	600 x 400 x 450 mm
Int dim:	555 x 355 x 440 mm
Weight:	3.8 Kg

Colour:



Stacks 2-up (side by side) on 800 x 600mm Euro Stackers.

Accessories include lid and wheeled dolly

## 45 litre Solid Euro Stacker



Ref:	TBOX8611
Ext dim:	800 x 600 x 118 mm
Int dim:	750 x 555 x 107 mm
Weight:	3.25 Kg

Colour:



Accessories include lid

## 90 litre with Open Handles



Ref:	TBOX8622
Ext dim:	800 x 600 x 230 mm
Int dim:	750 x 555 x 215 mm
Weight:	4.5 Kg

Colour:



Accessories include lid

## 135 litre with Open Handles



Ref:	TBOX8633
Ext dim:	800 x 600 x 340 mm
Int dim:	750 x 555 x 325 mm
Weight:	5.5 Kg

Colour:



Accessories include lid

## 155 litre with Open Handles



Ref:	TBOX8638
Ext dim:	800 x 600 x 388 mm
Int dim:	750 x 555 x 374 mm
Weight:	5.8 Kg

Colour:



Accessories include lid

## 179 litre with Open Handles



Ref:	TBOX8644
Ext dim:	800 x 600 x 450 mm
Int dim:	750 x 555 x 435 mm
Weight:	6.5 Kg

Colour:



Accessories include lid





# Euro Stacking Containers

## 20 litre Ventilated Euro



Ref: TBOX4322PF

Ext dim: 400 x 300 x 235 mm

Int dim: 355 x 255 x 228mm

Weight: 1 Kg

Colour:



Stacks 2-up (side by side) on 600 x 400mm Euro Stackers

Accessories include lid

## 12 litre Ventilated Euro



Ref: TBOX6480PF

Ext dim: 600 x 400 x 80 mm

Int dim: 552 x 355 x 62 mm

Weight: 1 Kg

Colour:



Stacks 2-up (side by side) on 800 x 600mm Euro Stackers

Accessories include lid and wheeled dolly

## 21 litre Ventilated Euro



Ref: TBOX6411PF

Ext dim: 600 x 400 x 118 mm

Int dim: 552 x 355 x 108

Weight: 1.1 Kg

Colour:



Stacks 2-up (side by side) on 800 x 600mm Euro Stackers

Accessories include lid and wheeled dolly

## 28 litre Ventilated Euro



Ref: TBOX6415PF

Ext dim: 600 x 400 x 150 mm

Int dim: 552 x 355 x 139 mm

Weight: 1.35 Kg

Colour:



Stacks 2-up (side by side) on 800 x 600mm Euro Stackers

Accessories include lid and wheeled dolly

## 45 litre Ventilated Euro



Ref: TBOX6422PF

Ext dim: 600 x 400 x 230 mm

Int dim: 552 x 355 x 215 mm

Weight: 1.95 Kg

Colour:



Stacks 2-up (side by side) on 800 x 600mm Euro Stackers

Accessories include lid and wheeled dolly

## Metal Card Clip



Ref: OPE90

Metal clip for Euro Stackers. Clips onto container ribs to retain labels, cards, etc.

## 400 x 300 Lid



Ref: TBOX43LID

Lid for 400 x 300mm Euro Stackers

Weight: 0.35 Kg

Colour options:



## 600 x 400 Lid



Ref: TBOX64LID

Lid for 600 x 400mm Euro Stackers

Weight: 0.7 Kg

Colour options:



## 800 x 600 Lid

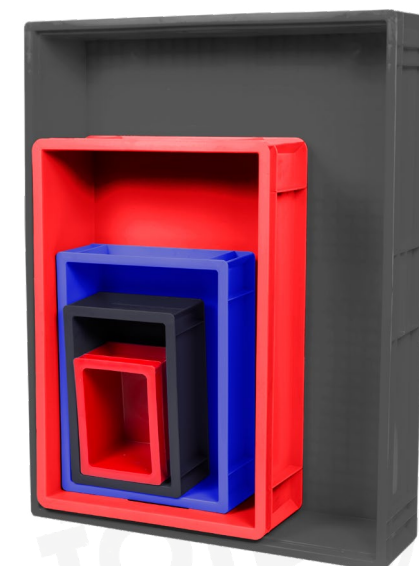


Ref: TBOX86LID

Lid for 800 x 600mm Euro Stackers

Weight: 1.4 Kg

Colour:



# Open Front Euro Stacking Containers


## Open Front Euros

Open Front Stacking Euro Containers provide instant access and allow easy identification of contents.

They offer a more versatile and less expensive alternative to standard shelving. Combine with Totebox Dollies to create mobile picking & storage units.

All models inter-stack to form compact handling units. 400x300mm models stack 2-up (side-by-side) on 600x400s.

Black models are manufactured using 100% recycled plastic.

 A Totebox Original Product (with a 2-year guarantee)

## 20 litre Open Front Euro



Ref:	TBOXPM4322
Ext dim:	400 x 300 x 230 mm
Int dim:	355 x 255 x 228 mm
Weight:	1.2 Kg
Colour:	



Stacks 2-up (side by side) on 600 x 400mm Euro Stackers.

Accessories include lid and wheeled dolly

## 60 litre Open Front Euro



Ref:	TBOXPM6433
Ext dim:	600 x 400 x 340 mm
Int dim:	552 x 352 x 325
Weight:	2.8 Kg
Colour:	



Stacks 2-up (side by side) on 800 x 600mm Euro Stackers.

Accessories include lid and wheeled dolly

## 30 litre Open Front Euro



Ref:	TBOXPML4332
Ext dim:	400 x 300 x 320 mm
Int dim:	370 x 270 x 305 mm
Weight:	1.59 Kg
Colour:	



Stacks 2-up (side by side) on 600 x 400mm Euro Stackers.

Accessories include lid and wheeled dolly

## 60 litre Open Front Euro



Ref:	TBOXPML6432
Ext dim:	600 x 400 x 320 mm
Int dim:	570 x 370 x 315 mm
Weight:	2.41 Kg
Colour:	



Stacks 2-up (side by side) on 800 x 600mm Euro Stackers.

Accessories include lid and wheeled dolly

# Dollies

## Dollies

Wheeled dollies allow loaded containers to be safely and effortlessly moved around the workplace.

They are ideal for a wide range of uses including warehouse handling operations, retail and industrial deliveries, office & home removals, catering & events, etc.

Light and strong, they are easy to carry and store in a car or van.

The TBOXDOL64 dolly carries a single stack of Euro size 600 x 400mm containers weighing up to 250Kg.

The DO795904 dolly carries two stacks of Euro size 600 x 400mm containers, or a single stack of 800x600mm containers, and can be loaded to 500Kg.

## 600 x 400 Dolly



Ref:	TBOXDOL64
Carries all 600 x 400mm containers	
2 fixed and 2 swivel castors	
Dim:	600 x 400 mm
Max Load:	250 Kg
Weight:	4 Kg
Colour options:	



## 600 x 400 Eco Dolly



Ref:	TBOXDOL64ECO
Carries all 600 x 400mm containers	
4 swivel castors. Uni-link feature.	
Dim:	600 x 400 mm
Max Load:	300 Kg
Weight:	4 Kg
Colour:	



## 800 x 600 Dolly



Ref:	DO795904
Carries 2 stacks of 600 x 400mm containers	
2 fixed and 2 swivel castors	
Dim:	800 x 600 mm
Max Load:	500 Kg
Weight:	8.8 Kg



## 800 x 600 Eco Dolly



Ref:	TBOXGD86
Carries 800 x 600mm Euro stackers and other 600 x 400mm containers stacked side-by-side.	
4 swivel castors	
Dim:	800 x 600 mm
Max Load:	500 Kg
Weight:	8.8 Kg



## 80 litre ALC Dolly



Ref:	91005
Carries 80 litre Attached Lid Container	
4 swivel castors	
Dim:	600 x 400 mm
Max Load:	250 Kg
Weight:	4 Kg



# Attached Lid Euro Stacking Containers

## Attached Lid Euros

Modular stacking containers with attached hinged lid. All models inter-stack to form a compact handling unit.

Attached lid protects contents from dust and moisture and inhibits theft when fitted with tamper-evident security ties.

## 10 litre Attached Lid Euro



Ref:	TBOX4313AL
Ext dim:	400 x 300 x 135 mm
Int dim:	370 x 270 x 107 mm
Weight:	1.32 Kg
Colour options:	



Stacks 2-up (side by side) on 600 x 400mm Euro Stackers.

## 15 litre Attached Lid Euro



Ref:	TBOX4317AL
Ext dim:	400 x 300 x 185 mm
Int dim:	370 x 270 x 147 mm
Weight:	1.52 Kg
Colour options:	



Stacks 2-up (side by side) on 600 x 400mm Euro Stackers.

## 20 litre Attached Lid Euro



Ref:	TBOX4323AL
Ext dim:	400 x 300 x 235 mm
Int dim:	370 x 270 x 197 mm
Weight:	1.72 Kg
Colour options:	



Stacks 2-up (side by side) on 600 x 400mm Euro Stackers.

## 30 litre Attached Lid Euro



Ref:	TBOX4332AL
Ext dim:	400 x 300 x 335 mm
Int dim:	370 x 270 x 297 mm
Weight:	2 Kg
Colour options:	



Stacks 2-up (side by side) on 600 x 400mm Euro Stackers.

## 35 litre Attached Lid Euro



Ref:	TBOX6418AL
Ext dim:	600 x 400 x 185 mm
Int dim:	570 x 370 x 157 mm
Weight:	1.57 Kg
Colour options:	



Stacks 2-up (side by side) on 800 x 600mm Euro Stackers.

Accessories include wheeled dolly

## 45 litre Attached Lid Euro



Ref:	TBOX6422AL
Ext dim:	600 x 400 x 235 mm
Int dim:	570 x 370 x 207 mm
Weight:	2.5 Kg
Colour options:	



Stacks 2-up (side by side) on 800 x 600mm Euro Stackers.

Accessories include wheeled dolly

## 56 litre Attached Lid Euro



Ref:	TBOX6428AL
Ext dim:	600 x 400 x 285 mm
Int dim:	570 x 370 x 257 mm
Weight:	2.92 Kg
Colour options:	



Stacks 2-up (side by side) on 800 x 600mm Euro Stackers.

Accessories include wheeled dolly

## 75 litre Attached Lid Euro



Ref:	TBOX6442AL
Ext dim:	600 x 400 x 435 mm
Int dim:	570 x 370 x 407 mm
Weight:	3.72 Kg
Colour options:	



Stacks 2-up (side by side) on 800 x 600mm Euro Stackers.

Accessories include wheeled dolly



# Really Useful Stacking Boxes

## Really Useful Boxes

Really Useful Boxes feature transparent sides, making identification of contents quick and easy.

Supplied in a sizes from 3 litre – 145 litre capacity, they are ideal for many domestic and business storage uses.

Containers securely stack to form compact storage units.

Accessories include suspension files for archiving documents.

## 3 litre Really Useful Box



Ref: RUB003

Ext dim: 245 x 180 x 160 mm

Int dim: 190 x 143 x 120 mm

Weight: 0.5 Kg

Colour options:



## 5 litre Really Useful Box



Ref: RUB005

Ext dim: 340 x 200 x 125 mm

Int dim: 285 x 160 x 105 mm

Weight: 0.54 Kg

Colour options:



## 9 litre Really Useful Box



Ref: RUB009

Ext dim: 395 x 255 x 155 mm

Int dim: 335 x 210 x 140 mm

Weight: 0.9 Kg

Colour options:



## 12 litre Really Useful Box



Ref: RUB012

Ext dim: 465 x 270 x 150 mm

Int dim: 415 x 235 x 140 mm

Weight: 1.0 Kg

Colour options:



## 18 litre Really Useful Box



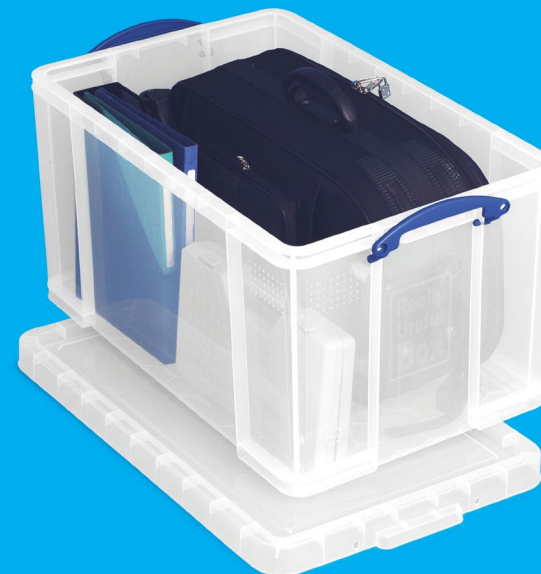
Ref: RUB018

Ext dim: 480 x 390 x 200 mm

Int dim: 395 x 335 x 170 mm

Weight: 1.3 Kg

Colour options:



## REALLY USEFUL BOXES

The clear winner for domestic and business storage!

Really useful boxes feature:

- Clear sides for easy identification of contents
- Vertical sides for maximum storage volume
- Comfortable handles for lifting and carrying
- Snap-fit lids to protect contents from dust and rain



# Really Useful Stacking Boxes

## 24.5 litre Really Useful Box



Ref: RUB024

Ext dim: 600 x 400 x 155 mm

Int dim: 535 x 355 x 140 mm

Weight: 1.5 Kg

Colour options:



## 35 litre Really Useful Box



Ref: RUB035

Ext dim: 480 x 390 x 310 mm

Int dim: 370 x 310 x 280 mm

Weight: 2.1 Kg

Colour options:



## 42 litre Really Useful Box



Ref: RUB042

Ext dim: 520 x 440 x 310 mm

Int dim: 405 x 365 x 280 mm

Weight: 2.7 Kg

Colour options:



## 48 litre Really Useful Box



Ref: RUB048

Ext dim: 600 x 400 x 315 mm

Int dim: 530 x 325 x 289 mm

Weight: 2.6 Kg

Colour options:



## 50 litre Really Useful Box



Ref: RUB050

Ext dim: 710 x 440 x 230 mm

Int dim: 605 x 370 x 200 mm

Weight: 2.7 Kg

Colour options:



## 64 litre Really Useful Box



Ref: RUB064

Ext dim: 710 x 440 x 310 mm

Int dim: 605 x 370 x 280 mm

Weight: 3.1 Kg

Colour options:



## 70 litre Really Useful Box



Ref: RUB070

Ext dim: 810 x 620 x 225 mm

Int dim: 710 x 545 x 190 mm

Weight: 4.0 Kg

Colour options:



## 84 litre Really Useful Box



Ref: RUB084

Ext dim: 710 x 440 x 380 mm

Int dim: 605 x 370 x 355 mm

Weight: 3.3 Kg

Colour options:



## 145 litre Really Useful Box



Ref: RUB145

Ext dim: 810 x 620 x 430 mm

Int dim: 710 x 545 x 400 mm

Weight: 4.16 Kg

Colour options:



## 6 Compartment Tray Insert



Ref: RUB6TRAY

Ext dim: 374 x 307 mm

Fits 18, 35, 50, 64 & 84 litre Really Useful Boxes

- 18L Really Useful Box can hold 2 trays
- 35L Really Useful Box can hold 3 trays
- 50L Really Useful Box can hold 4 trays
- 64L Really Useful Box can hold 6 trays
- 84L Really Useful Box can hold 8 trays

## 12 Compartment Tray Insert



Ref: RUB12TRAY

Ext dim: 374 x 307 mm

Fits 18, 35, 50, 64 & 84 litre Really Useful Boxes

- 18L Really Useful Box can hold 2 trays
- 35L Really Useful Box can hold 3 trays
- 50L Really Useful Box can hold 4 trays
- 64L Really Useful Box can hold 6 trays
- 84L Really Useful Box can hold 8 trays

## Suspension Files



Ref: RUBA4SF

A4 Suspension Files for 19, 35 & 48L Really Useful Boxes (pack of 10)

Dim: 244mm x 245mm

Ref: RUBFSSF

Foolscap Suspension Files for 35, 42 & 64L Really Useful Boxes (pack of 10)

Dim: 370mm x 245mm

# Really Useful Nesting Boxes

## Really Useful Nesting

Really Useful Nesting Boxes include all the benefits of regular stacking containers, plus they nest for efficient storage when not in use.

Containers securely stack on top of each other with lids fitted.

Empty boxes nest inside each other.

## 43 litre Really Useful Nest



Ref:	RUB43NEST
Ext dim:	695 x 440 x 230 mm
Int dim:	602 x 368 x 180 mm
Nested Height:	20 mm
Weight:	2.5 Kg
Colour options:	

## 62 litre Really Useful Nest



Ref:	RUB62NEST
Ext dim:	695 x 440 x 287 mm
Int dim:	602 x 368 x 265 mm
Nested Height:	20 mm
Weight:	2.8 Kg
Colour options:	

## 83 litre Really Useful Nest



Ref:	RUB83NEST
Ext dim:	695 x 440 x 368 mm
Int dim:	602 x 368 x 346 mm
Nested Height:	20 mm
Weight:	3.1 Kg
Colour options:	

## For all your storage needs



## How will you use yours?

The clear winner for domestic and business storage!

# Stacking & Nesting Supermarket Crates

## Supermarket Crates

From field or food manufacturer to retail point-of-sale Supermarket Crates protect, maintain quality and promote hygiene for fresh and frozen fruit, vegetables, packed meats, fish, prepared meals and many other food items.

Strong and secure, Supermarket Crates trays stack ten high carrying a 16Kg unit load.

Ventilated sides promote air flow, speeding cooling and helping to maintain a constant temperature

Empty trays nest by up to 76% of their original height saving valuable space on return transport.

## 15 litre Supermarket Crate



Ref:	SN431802
Ext dim:	400 x 300 x 180 mm
Int dim:	364 x 264 x 144 mm
Nested height:	50 mm
Weight:	1 Kg
Colour:	

Stacks 2-up (side by side) on 600 x 400mm Supermarket crates



## 35 litre Supermarket Crate



Ref:	SN641902
Ext dim:	600 x 400 x 199 mm
Int dim:	546 x 349 x 172 mm
Nested height:	45 mm
Weight:	1.8 Kg
Colour options:	

Accessories include wheeled dollies

## 44 litre Supermarket Crate



Ref:	SN642402
Ext dim:	600 x 400 x 253 mm
Int dim:	548 x 352 x 226
Nested height:	65 mm
Weight:	2 Kg
Colour options:	

Accessories include wheeled dollies

## 54 litre Supermarket Crate



Ref:	SN64300REGRIND
Ext dim:	600 x 400 x 300 mm
Int dim:	548 x 352 x 273 mm
Nested height:	100 mm
Weight:	2.0 Kg
Colour:	

Accessories include wheeled dollies

# Stacking & Nesting 180° Containers

## 180° Stack Nesters

Containers securely stack when loaded and nest, by turning through 180°, to save valuable space on return transport.

A tough and durable design is combined with smooth hygienic surfaces, making them equally at home in heavy duty industrial applications or for food handling and distribution.

## 27 litre 180° Stack Nest



Ref:	TSN27
Ext dim:	600 x 400 x 150 mm
Int dim:	533 x 368 x 145 mm
Nested height:	60 mm
Weight:	1 Kg
Colour:	

Accessories include wheeled dollies

## 50 litre 180° Stack Nest



Ref:	TSN50
Ext dim:	600 x 400 x 275 mm
Int dim:	530 x 380 x 270 mm
Nested height:	90 mm
Weight:	2 Kg
Colour:	

Accessories include wheeled dollies

## 56 litre 180° Stack Nest



Ref:	TSN56
Ext dim:	600 x 400 x 300 mm
Int dim:	542 x 376 x 295 mm
Nested height:	110 mm
Weight:	2.2 Kg
Colour:	

Accessories include wheeled dollies

## 70 litre 180° Stack Nest



Ref:	TSN73
Ext dim:	690 x 430 x 317 mm
Int dim:	598 x 412 x 312 mm
Nested height:	68 mm
Weight:	2.8 Kg
Colour:	

Accessories include wheeled dollies



# Bakery Range

## Bakery Trays

A range of hygienic Confectionery Trays and Bread Baskets ideal for bakeries, food processors, butchers, and caterers.

30"x18" stacking Confectionery Trays provide hygienic handling, distribution and point-of-sale display of pies, pasties and morning goods. They are also ideal for a number of food handling uses.

Stacking and nesting Bread baskets incorporate large ventilation holes to speed cooling, comfortable hand-holds and an open-front that allows easy access to contents at point-of-sale.

Bread Baskets securely stack on bale arms when loaded, and nest with arms pushed back.

## 20 litre Solid 30" x 18"



Ref: M111B

Solid stacking confectionery tray

Ext dim: 765 x 455 x 90 mm

Int dim: 735 x 425 x 80 mm

Weight: 1.8 Kg

Colour:



Accessories include lid and wheeled dolly

## 20 litre Ventilated 30" x 18"



Ref: M111D

Ventilated stacking confectionery tray

Ext dim: 765 x 455 x 90 mm

Int dim: 735 x 425 x 80 mm

Weight: 1.7 Kg

Colour:



Accessories include lid and wheeled dolly

## 30 litre Solid 30" x 18"



Ref: M211BH

Solid confectionery tray with open hand-holds

Ext dim: 765 x 455 x 125 mm

Int dim: 735 x 425 x 110 mm

Weight: 2.1 Kg

Colour:



Accessories include lid and wheeled dolly

## 30 litre Ventilated 30" x 18"



Ref: M211DH

Vented confectionery tray with open hand-holds

Ext dim: 765 x 455 x 125 mm

Int dim: 735 x 425 x 110 mm

Weight: 2 Kg

Colour:



Accessories include lid and wheeled dolly

## 50 litre Solid 30" x 18"



Ref: M311BH

Solid confectionery tray with open hand-holds

Ext dim: 765 x 455 x 175 mm

Int dim: 735 x 425 x 160 mm

Weight: 2.6 Kg

Colour:



Accessories include lid and wheeled dolly

## 50 litre Ventilated 30" x 18"



Ref: M311BH

Vented confectionery tray with open hand-holds

Ext dim: 762 x 457 x 160 mm

Int dim: 735 x 425 x 160 mm

Weight: 2.5 Kg

Colour:



Accessories include lid and wheeled dolly

## 30" x 18" Lid



Ref: R11142

Lid for confectionery trays

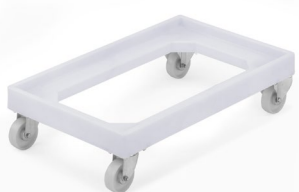
Ext dim: 765 x 455 mm

Weight: 1.2 Kg

Colour:



## Confectionery Tray Dolly



Ref: R1210

Carries all 30" x 18" Confectionery Trays

2 fixed and 2 swivel castors

Dim: 875 x 565 x 230 mm

Max Load: 250 Kg

Colour:



## 10 Loaf Bread Tray



Ref: TBOX10LF

Ext dim: 655 x 555 x 189 mm

Int dim: 615 x 510 x 169 mm

Weight: 1.7 Kg

Colour:



## 12 Loaf Bread Tray



Ref: TBOX12LF

Ext dim: 715 x 620 x 190 mm

Int dim: 630 x 560 x 155 mm

Weight: 1.9 Kg

Colour:



## 15 Loaf Bread Tray



Ref: TBOX15LF

Ext dim: 790 x 615 x 165 mm

Int dim: 730 x 575 x 150 mm

Weight: 2.1 Kg

Colour:





# Bulk Containers

## Bulk Containers

Bulk Containers designed for intensive handling and distribution applications.

The Folding Bulk Box can be assembled and folded by a single operator. Drop-doors allow easy access to contents, preventing users from having to lean into a part empty container.

Folding Bulk Boxes stack to five high carrying a 500Kg unit load - a combined load of 2.5 tonnes.

Hygienic, strong and stable; rigid Pallet Boxes are ideal for heavy duty handling applications in both food and non-food industrial environments.

Pallet Boxes stack to eight high carrying a 700Kg unit load - a combined load of 5.6 tonnes.

## 800 litre Folding Bulk Box



Ref:	TFOLDHERC
Ext dim:	1200 x 1000 x 975 mm
Int dim:	1121 x 921 x 775 mm
Folded height:	406 mm
Unit Load:	500 Kg (Stack to 5 high)
Weight:	48 Kg



Accessories include drop-on lid

## 625 litre Solid Pallet Box



Ref:	TBOXBP1210/GREY
Ext dim:	1200 x 1000 x 760 mm
Int dim:	920 x 1120 x 610 mm
Unit Load:	700 Kg (Stack to 8 high)
Weight:	35 Kg

Colour:



Accessories include drop-on lid

## 625 litre Vented Pallet Box



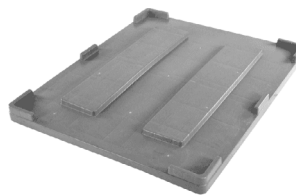
Ref:	TBOXBP1210P/GREY
Ext dim:	1200 x 1000 x 760 mm
Int dim:	920 x 1120 x 610 mm
Unit Load:	700 Kg (Stack to 8 high)
Weight:	33 Kg

Colour:



Accessories include drop-on lid

## Pallet Box Lid



Ref:	TBOXPBLID
Lid for 625 litre Bulk Boxes	
Ext dim:	1200 x 1000 mm

Colour:



# NEW FOLDING BULK CONTAINER

The new Totebox Folding Bulk Container will help you to reduce costs, speed handling operations and increase storage density.

**Saving money:** light-weight reduces fuel costs, heavy-duty construction eliminates maintenance costs and folds flat when empty to save valuable space on return transport.

**Faster handling:** wide-width fork entry slots speed fork lift operations while drop-doors provide easy access for faster manual loading and unloading.

**Denser storage:** stacks five high carrying a unit load of up to 500 Kg (a combined load of 2.5 tonnes).

# Export Pallets

## Eco Pallets

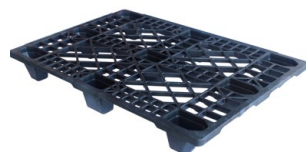
Manufactured in recycled plastic, light-weight Export Pallets are ideal for multi-trip logistics operations, making significant fuel savings over heavier pallets.

When not in use, pallets nest by 62% of overall height for even greater savings on return transport.

Unlike timber pallets:

- There are no splinters or metal fixings that could damage contents or injure personnel.
- Eco Pallets do not harbour wood-born pests and, so, do not have to be treated for export.
- Eco Pallets have a constant tare and do not absorb water or contaminants.


## 1200 x 800 Eco Pallet



Ref:	TBOXPALLETISPM1280
Euro size pallet with 9 feet	
Ext dim:	1200 x 800 x 130 mm
Static load:	1500 Kg
Dynamic Load:	400 Kg
Weight:	4 Kg
Colour:	

## 1200 x 1000 Eco Pallet



Ref:	TBOXPALLETISPM1210
UK size pallet with 9 feet	
Ext dim:	1200 x 1000 x 130 mm
Static load:	1500 Kg
Dynamic Load:	400 Kg
Weight:	4.7 Kg
Colour:	

# General Use and Hygiene Pallets

## General & Hygiene Pallets

General Use and Hygiene Pallets are ideal for tough storage and handling operations, safely racking loads of up to 1.5 tonnes.

Unlike timber pallets:

- Both General Use and Hygiene Pallets are hygienic, easy to clean and do not absorb moisture or other contaminants.
  - There are no splinters or metal fixings that could damage contents or injure personnel.
  - They have a constant tare and do not absorb water or contaminants.
- Hygiene Pallets are approved for direct food contact.


## 800 x 600 Universal Pallet



Ref:	PA262804
Universal pallet with 3 runners & collar	
Ext dim:	800 x 600 x 165 mm
Static load:	1000 Kg
Dynamic load:	500 Kg
Racked load:	n/a
Weight:	7 Kg
Colour:	


## 1200 x 800 Gen Use Pallet



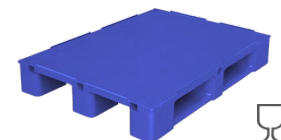
Ref:	TBOXPALLETMID1208
Heavy-duty pallet with 3 runners & 7mm collar	
Ext dim:	1200 x 800 x 150 mm
Static load:	5000 Kg
Dynamic load:	1500 Kg
Racked load:	1000 Kg
Weight:	14.3 Kg
Colour:	


## 1200 x 1000 Gen Use Pallet



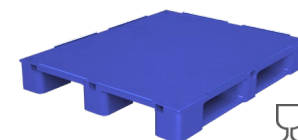
Ref:	TBOXPALLETMID1210
Heavy-duty pallet with 3 runners & 7mm collar	
Ext dim:	1200 x 1000 x 155 mm
Static load:	5000 Kg
Dynamic load:	1500 Kg
Racked load:	1000 Kg
Weight:	18 Kg
Colour:	


## 1200 x 800 Hygiene Pallet



Ref:	TBOXPALLETHY1208BLUE
Heavy-duty pallet with 3 runners & 7mm collar	
Ext dim:	1200 x 800 x 150 mm
Static load:	5000 Kg
Dynamic load:	1500 Kg
Racked load:	1000 Kg
Weight:	14.3 Kg
Colour:	

## 1200 x 1000 Hygiene Pallet



Ref:	TBOXPALLETHY1210BLUE
Heavy-duty pallet with 3 runners & 7mm collar	
Ext dim:	1200 x 1000 x 155 mm
Static load:	5000 Kg
Dynamic load:	1500 Kg
Racked load:	1000 Kg
Weight:	18 Kg
Colour:	

# 321 PLASTIC PALLETS

## • 3 Models

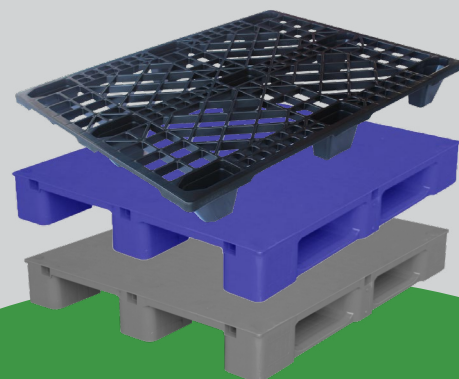
Export, General Use & Hygienic

## • 2 Sizes

1200 x 800mm & 1200 x 1000mm

## • 1 Supplier

Totebox; UK's No.1 materials handling expert



only from Totebox