

CONTENTS

DRINKING TROUGHS Circular 4 – 8 Rectangular 9 – 20 Wall & Floor Mounted 21 – 25	SHEEP DIPS Sheep Dips 39 – 41	OTHER PRODUCTS Perfo Ground Stabilisation Matting 59
FEED TROUGHS Floor Standing 26 – 30 Hanging 31 – 32	WATER TANKS Above & Below Ground Tanks 43 – 50 Slim line Tanks 51 – 52	APPENDIX Delivery Times I FAQs II Quality III Other Information IV
FOOTBATHS Footbaths 33 – 36 Equestrian Water Trays 36 Hoof Spreading Footbaths 37	DAIRY HYGIENE Rectangular Wash Troughs 53 – 54 Trough Style Wash Troughs 55 – 57 Churns 58	



2046L DRINKING TROUGHS

2046 litres



AT1 circular drinking trough

Large capacity trough for large herds in open areas

Smooth line interior for ease of cleaning

Low drinking height so animals can comfortably reach the water

Single drainage outlet (outlet 1)

Integral Service box and removable lid (ref AT cover)

Part 2 compliant $\frac{3}{4}$ " ballcock

Manufactured from UV stabilised and frost resistant to -40 °C MDPE

	Dimensions Dia. mm	Drinking Height	Capacity Litres	Drainage Outlet	Ballcock & Fitting	Service Box Cover
AT1	2210 x 806H	720 mm	2046	1½"	Yes	Removable

Available Now from - Merlin Industrial Products Ltd - 0800 0418 650



909L

DRINKING TROUGHS



909 litres



AT6

circular drinking trough

Large capacity trough

Smooth line interior for ease of cleaning

Single drainage outlet (outlet 1)

Integral Service box and removable lid (ref AT cover)

Part 2 compliant 1/2" ballcock

Manufactured from UV stabilised and frost resistant to -40 °C MDPE

	Dimensions Dia. mm	Drinking Height	Capacity Litres	Drainage Outlet	Ballcock & Fitting	Service Box Cover
AT6	1560 x 855H	785 mm	909	1 1/2"	Yes	Removable

Available Now from - Merlin Industrial Products Ltd - 0800 0418 650



682L

DRINKING TROUGHS



682 litres



AT15 circular drinking troughs

Low drinking height so animals can comfortably easily reach the water

Smooth line interior for ease of cleaning

Single drainage outlet (outlet 1)

Integral Service box and removable lid (ref AT cover)

Part 2 compliant 1/2" ballcock

Manufactured from UV stabilised and frost resistant to -40 °C MDPE

	Dimensions Dia. mm	Drinking Height	Capacity Litres	Drainage Outlet	Ballcock & Fitting	Service Box Cover
AT15	1450 x 670H	619 mm	682	1 1/2"	Yes	Removable

Available Now from - Merlin Industrial Products Ltd - 0800 0418 650



1075L DRINKING TROUGHS

1075 litres



Recommended for areas where a constant water supply is not available

Supplied without a filling mechanism

Smooth line interiors for ease of cleaning

Low drinking height so Cattle can comfortably reach the water

Single drainage outlet (outlet 1)

Manufactured from UV stabilised and frost resistant to -40 °C MDPE

	Dimensions Dia. mm	Drinking Height	Capacity Litres	Drainage Outlet	Ballcock & Fitting	Service Box Cover
AT5	1650 x 620H	620 mm	1075	1½"	No	N/A

AT5 circular drinking troughs

Available Now from - Merlin Industrial Products Ltd - 0800 0418 650



675L

DRINKING TROUGHS

675 litres



Recommended for areas where a constant water supply is not available

Supplied without a filling mechanism

Smooth line interiors for ease of cleaning

Low drinking height so Beef Cattle can comfortably reach the water

Single drainage outlet (outlet 1)

Manufactured from UV stabilised and frost resistant to -40 °C MDPE

	Dimensions Dia. mm	Drinking Height	Capacity Litres	Drainage Outlet	Ballcock & Fitting	Service Box Cover
AT8	1330 x 620H	620 mm	675	1½"	No	N/A

AT8 circular drinking troughs

Available Now from - Merlin Industrial Products Ltd - 0800 0418 650



75L

DRINKING TROUGHS



75 litres



WT75 R rectangular drinking troughs

Available Now from - Merlin Industrial Products Ltd - 0800 0418 650

Movable ballcock support allows choice of centre fill or end fill set up

Easy to clean, tough, double skin design

Drainage outlet (50mm) and plug included as standard

Part 2 compliant 1/2" ballcock

Bolt down points included as standard

Manufactured from UV stabilised and frost resistant to -40 °C MDPE

UV stabilised

	Dimensions mm	Drinking Height	Capacity Litres	Drainage Outlet	Ballcock & Fitting	Service Box Cover
WT75R	1190L x 430W x 340.5H	235 mm	75	50 mm	Yes	Removable



120L

DRINKING TROUGHS

120 litres



Movable ballcock support allows choice of centre fill or end fill set up

Easy to clean, tough, double skin design

Drainage outlet (50mm) and plug included as standard

Part 2 compliant 1/2" ballcock

Bolt down points included as standard

Manufactured from UV stabilised and frost resistant to -40 °C MDPE

UV stabilised

	Dimensions mm	Drinking Height	Capacity Litres	Drainage Outlet	Ballcock & Fitting	Service Box Cover
WT120R	1190L x 430W x 456H	355 mm	120	50 mm	Yes	Removable

WT120 R rectangular drinking troughs

Available Now from - Merlin Industrial Products Ltd - 0800 0418 650



1136L DRINKING TROUGHS

1136 litres



Free standing centre fill trough suitable for dairy cows and beef cattle

Ribbed walls for strength

Two drainage outlets (outlet 1)

Integral Service box and removable lid (ref ATL2 cover)

Part 2 compliant 1/2" ballcock

Manufactured from UV stabilised and frost resistant to -40 °C MDPE

	Dimensions mm	Drinking Height	Capacity Litres	Drainage Outlet	Ballcock & Fitting	Service Box Cover
AT22	2000L x 1200W x 795H	695 mm	1136	1 1/2" x 2	Yes	Removable

AT22 rectangular drinking troughs

Available Now from - Merlin Industrial Products Ltd - 0800 0418 650



545L

DRINKING TROUGHS

545 litres



AT19 rectangular drinking troughs

Longer format centre fill trough

Includes two drainage outlets as standard (outlet 1)

Suitable for use indoors or in fields

Integral Service box and removable lid (ref ATL2 cover)

Part 2 compliant 1/2" ballcock

Manufactured from UV stabilised and frost resistant to -40 °C MDPE

	Dimensions mm	Drinking Height	Capacity Litres	Drainage Outlet	Ballcock & Fitting	Service Box Cover
AT19	2600L x 610W x 534H	460 mm	545	1 1/2" x 2	Yes	Removable

Available Now from - Merlin Industrial Products Ltd - 0800 0418 650



272L

DRINKING TROUGHS

272 litres



Centre fill trough which will fit between two fields, yards or pens

272 litre capacity

Integral Service box and removable lid (ref ATL2 cover)

Part 2 compliant $\frac{1}{2}$ " ballcock

Manufactured from UV stabilised and frost resistant to -40 °C MDPE

	Dimensions mm	Drinking Height	Capacity Litres	Drainage Outlet	Ballcock & Fitting	Service Box Cover
AT21	1270L x 650W x 605H	510 mm	272	No	Yes	Removable

AT21 rectangular drinking troughs

Available Now from - Merlin Industrial Products Ltd - 0800 0418 650



410L

DRINKING TROUGHS

410 litres



Centre fill trough which will fit between two fields, yards or pens

410 litre capacity

Integral Service box and removable lid (ref ATL2 cover)

Part 2 compliant 1/2" ballcock

Manufactured from UV stabilised and frost resistant to -40 °C MDPE

	Dimensions mm	Drinking Height	Capacity Litres	Drainage Outlet	Ballcock & Fitting	Service Box Cover
AT18	1520L x 720W x 635H	535 mm	410	No	Yes	Removable

AT18 rectangular drinking troughs

Available Now from - Merlin Industrial Products Ltd - 0800 0418 650



318L

DRINKING TROUGHS

318 litres



Popular end fill model

External rim and moulded in ribs for extra strength and stability

Single drainage outlet (outlet 1)

Integral Service box and removable lid (ref AT Cover)

Part 2 compliant 1/2" ballcock

Manufactured from UV stabilised and frost resistant to -40 °C MDPE

	Dimensions mm	Drinking Height	Capacity Litres	Drainage Outlet	Ballcock & Fitting	Service Box Cover
AT2	2019L x 559W x 559H	455 mm	318	1 1/2"	Yes	Removable

AT2 rectangular drinking troughs

Available Now from - Merlin Industrial Products Ltd - 0800 0418 650



182L

DRINKING TROUGHS

182 litres



Popular end fill model

External rim and moulded in ribs for extra strength and stability

Single drainage outlet (outlet 1)

Integral Service box and removable lid (ref AT Cover)

Part 2 compliant 1/2" ballcock

Manufactured from UV stabilised and frost resistant to -40 °C MDPE

	Dimensions mm	Drinking Height	Capacity Litres	Drainage Outlet	Ballcock & Fitting	Service Box Cover
AT3	1353L x 559W x 535H	455 mm	182	1 1/2"	Yes	Removable

AT3 rectangular drinking troughs

Available Now from - Merlin Industrial Products Ltd - 0800 0418 650



227L

DRINKING TROUGHS

227 litres



End fill design

One piece construction and smooth 'easy clean' surface

Single drainage outlet (outlet 1)

Integral Service box and removable lid (ref ATL2 cover)

Part 2 compliant 1/2" ballcock

Manufactured from UV stabilised and frost resistant to -40 °C MDPE

	Dimensions mm	Drinking Height	Capacity Litres	Drainage Outlet	Ballcock & Fitting	Service Box Cover
AT24	1400L x 560W x 500H	400 mm	227	1 1/2"	Yes	Removable

AT24 rectangular drinking troughs

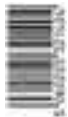
Available Now from - Merlin Industrial Products Ltd - 0800 0418 650



114L

DRINKING TROUGHS

114 litres



Centre fill design

One piece construction and smooth 'easy clean' surface

Integral Service box and removable lid (ref ATL2 cover)

Part 2 compliant 1/2" ballcock

Manufactured from UV stabilised and frost resistant to -40 °C MDPE

	Dimensions Dia. mm	Drinking Height	Capacity Litres	Drainage Outlet	Ballcock & Fitting	Service Box Cover
AT16	1000L x 430W x 455H	380 mm	114	No	Yes	Removable

AT16 rectangular drinking troughs

Available Now from - Merlin Industrial Products Ltd - 0800 0418 650



77L

DRINKING TROUGHS

77 litres



Centre fill design

One piece construction and smooth 'easy clean' surface

Integral Service box and removable lid (ref ATL2 cover)

Part 2 compliant 1/2" ballcock

Manufactured from UV stabilised and frost resistant to -40 °C MDPE

	Dimensions Dia. mm	Drinking Height	Capacity Litres	Drainage Outlet	Ballcock & Fitting	Service Box Cover
AT17	1000L x 430W x 355H	280 mm	77	No	Yes	Removable

AT17 rectangular drinking troughs

Available Now from - Merlin Industrial Products Ltd - 0800 0418 650



6.8L

DRINKING BOWLS

6.8 litres



Compact design with built in mounts for easy wall fixing

Ideal for single animal use in loose boxes or stables

Large easy drain screw cap for fast emptying

Includes removable service box cover for easy access to ballcock

Left and right Ballock fixing

Includes Part 2 ballcock compliant with Water Regulations

	Dimensions mm	Drinking Height	Capacity Litres	Drainage Outlet	Ballcock & Fitting	Service Box Cover
AT25	410L x 300W x 344H	Wall Mounted	6.8	46mm	Yes	Removable

AT25 drinking bowls

Available Now from - Merlin Industrial Products Ltd - 0800 0418 650



17L

DRINKING BOWLS

17 litres



Corner bowl

Wall mounted

Built in mounts for easy wall fixing

Includes removable service box cover for easy access to ballcock

Includes Part 2 ballcock compliant with Water Regulations

Large easy drain screw cap for fast emptying

	Dimensions mm	Drinking Height	Capacity Litres	Drainage Outlet	Ballcock & Fitting	Service Box Cover
AT23	580L x 430W x 270H	Wall mounted	17	46mm	Yes	Removable

AT23 round end drinking bowls

Available Now from - Merlin Industrial Products Ltd - 0800 0418 650



27L

DRINKING BOWLS



27 litres



AT11 round end drinking bowls

Large capacity bowl

Ideal for single animal use in loose boxes or stables

19 mm outlet with 25 mm grommet for drainage

Includes removable service box cover for easy access to ballcock

Includes Part 2 ballcock compliant with Water Regulations

	Dimensions mm	Drinking Height	Capacity Litres	Drainage Outlet	Ballcock & Fitting	Service Box Cover
AT11	552L x 457W x 254H	Wall Mounted	27	19 mm	Yes	Removable

Available Now from - Merlin Industrial Products Ltd - 0800 0418 650



45L

DRINKING BOWLS



45 litres



Floor standing trough

Ideal for single animal use in loose boxes or stables

Includes removable service box cover for easy access to ballcock

Includes Part 2 ballcock compliant with Water Regulations

	Dimensions mm	Drinking Height	Capacity Litres	Drainage Outlet	Ballcock & Fitting	Service Box Cover
AT20	700L x 550W x 410H	235 mm	45	No	Yes	Removable

AT20 round end drinking bowls

Available Now from - Merlin Industrial Products Ltd - 0800 0418 650



19L

DRINKING BOWLS

19 litres



Easy to clean, strong, double skin construction

70 mm drainage bung for rapid emptying in under 38 seconds

4 integral robust wall fixing points

Left and right ballcock fixing

Part 2 compliant ½" ballcock

Large removable service box cover for easy access to the ballcock

Manufactured from frost resistant, UV stabilised MDPE

	Dimensions mm	Drinking Height	Capacity Litres	Drainage Outlet	Ballcock & Fitting	Service Box Cover
WT19	500L x 403W x 308H	Wall mounted	19	70 mm	Yes	Removable

WT19 rectangular drinking bowls

Available Now from - Merlin Industrial Products Ltd - 0800 0418 650

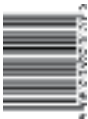


10L

DRINKING BOWLS



10 litres



Easy to clean, strong, double skin construction

80mm drainage outlet to increase drainage speed

3 strong double skin easy fixing location points

Angled lower body section to allow full drainage

Supplied with standard ballcock

Visible grey drainage cap for easy location

Manufactured from frost resistant, UV stabilised MDPE

	Dimensions mm	Drinking Height	Capacity Litres	Drainage Outlet	Ballcock & Fitting	Service Box Cover
WT10	383L x 320W x 288H	Wall mounted	10	80 mm	Yes	Removable

WT10 rectangular drinking bowls

Available Now from - Merlin Industrial Products Ltd - 0800 0418 650



16L

FEED TROUGHS

16 litres



Double skin moulding for strength and durability

Easy clean surface with no dirt traps

Moulded in handles on the bottom of the trough

Kiss off features have been added for strength to the structure

Drainage holes can be drilled through one of the indentations on the underside of the product

Can be stacked for storage. Plus different sizes will also inter-stack

	Dimensions mm	Capacity Litres
LF100	1000L x 295W x 162H	16

LF100 floor standing feed troughs

Available Now from - Merlin Industrial Products Ltd - 0800 0418 650



34L

FEED TROUGHS



34 litres



Double skin moulding for strength and durability

Easy clean surface with no dirt traps

Moulded in handles on the bottom of the trough

Kiss off features have been added for strength to the structure

Drainage holes can be drilled through one of the indentations on the underside of the product

Can be stacked for storage. Plus different sizes will also inter-stack

	Dimensions mm	Capacity Litres
LF200	2000L x 295W x 162H	34

LF200 floor standing feed troughs

Available Now from - Merlin Industrial Products Ltd - 0800 0418 650



54L

FEED TROUGHS

54 litres



Double skin moulding for strength and durability

Easy clean surface with no dirt traps

Moulded in handles on the bottom of the trough

Kiss off features have been added for strength to the structure

Drainage holes can be drilled through one of the indentations on the underside of the product

Can be stacked for storage. Plus different sizes will also inter-stack

	Dimensions mm	Capacity Litres
LF280	2800L x 295W x 162H	54

LF280 floor standing feed troughs

Available Now from - Merlin Industrial Products Ltd - 0800 0418 650



80L

FEED TROUGHS



80 litres



Larger (80 litre) capacity unit

Strong and durable, one piece, moulding

Easy to clean, safe and stable in use

Stacks when not in use

	Dimensions mm	Capacity Litres
LF5	2000L x 460W x 230H	80

LF5 floor standing feed troughs

Available Now from - Merlin Industrial Products Ltd - 0800 0418 650



18L

FEED TROUGHS



18 litres



HR40A floor standing tyre feeder trough

Fits inside a 15 inch tyre (not included)

Lightweight and easy to handle

Smooth hygienic and easily cleaned

Ideal for mineral licks

	Dimensions Dia. mm	Capacity Litres
HR40A	425 x 178H	18

Available Now from - Merlin Industrial Products Ltd - 0800 0418 650



28L

FEED TROUGHS



28 litres



Versatile hanging trough

Strong and durable one piece moulding

Smooth easy clean surface

Built in lip for hanging on bars and rails

	Dimensions mm	Capacity Litres
LF6	500L x 413W x 305H	28

LF6 hanging feed troughs

Available Now from - Merlin Industrial Products Ltd - 0800 0418 650



73L

FEED TROUGHS

73 litres



LF4 hanging feed troughs

Versatile hanging trough

Strong and durable one piece moulding

Smooth easy clean surface

Comes complete with galvanised hanging brackets and fixings

	Dimensions Dia. mm	Capacity Litres
LF4	1515L x 380W x 305H	73

Available Now from - Merlin Industrial Products Ltd - 0800 0418 650



86L

FOOTBATHS

86 litres



Traditional style footbath commonly used with formalin

Ribbed base for safe, quick penetration of footrot treatments

Resistant to all footrot chemicals

Easy to clean and handle

Tough one piece moulds

Can be linked together length wise for longer runs

	Dimensions mm	Capacity Litres
FB2	3000L x 470W x 180H	86

FB2 walk through footbath

Available Now from - Merlin Industrial Products Ltd - 0800 0418 650



180L

FOOTBATHS

180 litres



FB1 walk through footbath

Anti-slip base for safe, quick penetration of footrot treatments

Safe, large radius corners with smooth edges

Resistant to all footrot chemicals

Easy to clean and handle

Tough one piece moulds

	Dimensions mm	Capacity Litres
FB1	2000L x 850W x 150H	180

Available Now from - Merlin Industrial Products Ltd - 0800 0418 650



309L

FOOTBATHS

309 litres



Anti-slip base for safe, quick penetration of footrot treatments

Safe, large radius corners with smooth edges

Resistant to all footrot chemicals

Easy to clean and handle

Tough one piece moulds

	Dimensions mm	Capacity Litres
FB4	3050L x 915W x 150H	309

FB4 walk through footbath

Available Now from - Merlin Industrial Products Ltd - 0800 0418 650



700L

FOOTBATHS

700 litres



Anti-slip base for safe, quick penetration of footrot treatments

Safe, large radius corners with smooth edges

Resistant to all footrot chemicals

Easy to clean and handle

Tough one piece moulds

FB5 can also be used as a water tray (WT3)

FB5/WT3 footbath/equestrian tray

	Dimensions mm	Capacity Litres
FB5/WT3	3150L x 1635W x 166H	700

Available Now from - Merlin Industrial Products Ltd - 0800 0418 650



541L

FOOTBATHS

541 litres



Specially designed floor spreads the hoof for effective footrot treatment

Suitable for large animals

Safe, large radius corners with smooth edges

Resistant to all footrot chemicals

Easy to clean and handle

Tough one piece mould

	Dimensions mm	Capacity Litres
FB3	3000L x 1100W x 240H	541

FB3 hoof spreading footbath

Available Now from - Merlin Industrial Products Ltd - 0800 0418 650



www.paxtonagri.co.uk

Available Now from - Merlin Industrial Products Ltd - 0800 0418 650



1818L

SHEEP DIPS

1818 litres



Large (1818 litre) capacity

Integral Left Hand entry slide

Drain back exit steps

Anti splash rim reduces spillage

Smooth finish to reduce injury

Hard wearing MDPE

Resistant to dipping solutions

	Dimensions mm	Capacity Litres
SD400LH	2692L x 2060W x 1283H	1818

SD400LH round sheep dip

Available Now from - Merlin Industrial Products Ltd - 0800 0418 650



1250L

SHEEP DIPS

1250 litres



Integral Right Hand entry slide

Anti splash rim reduces spillage

Drain back exit steps

Smooth finish to reduce injury

Hard wearing MDPE

Resistant to dipping solutions

SD275RH round sheep dip

	Dimensions mm	Capacity Litres
SD275RH	2300L x 1800W x 1240H	1250

Available Now from - Merlin Industrial Products Ltd - 0800 0418 650



1136L

SHEEP DIPS

1136 litres



Drain back exit steps

Anti splash rim reduces spillage

Smooth finish to reduce injury

Hard wearing MDPE

Resistant to dipping solutions

	Dimensions mm	Capacity Litres
SD250	2915L x 915W x 1220H	1136

SD250 rectangular sheep dip

Available Now from - Merlin Industrial Products Ltd - 0800 0418 650



www.paxtonagri.co.uk

Available Now from - Merlin Industrial Products Ltd - 0800 0418 650

10000L

WATER TANKS

10000 litres



CT2200 JA above ground storage tank

Available Now from - Merlin Industrial Products Ltd - 0800 0418 650

Suitable for Potable Water (100% food grade material used throughout)

Hard wearing, one piece, stress free moulding

Manufactured from UV stabilised and frost resistant to -40 °C MDPE

Smooth hygienic surfaces

Built in lifting lugs and large Screw in lid

Flat area for fitting outlets and connections

Supplied with 2" BSP Outlet. Optional Byelaw 30 kit available

WRAS approved

	Dimensions Dia. mm	Manhole Internal	Capacity Litres	Vented Insert Internal
CT2200 JA	2515 x 2575H (2540 to top of dome)	546 mm	10000	127 mm

4546 litres



CT1000 JA above ground storage tank

Available Now from - Merlin Industrial Products Ltd - 0800 0418 650

4546L

WATER TANKS

Suitable for Potable Water (100% food grade material used throughout)

Hard wearing, one piece, stress free moulding

Manufactured from UV stabilised and frost resistant to -40 °C MDPE

Smooth hygienic surfaces

Built in lifting lugs and large Screw in lid

Flat area for fitting outlets and connections

Supplied with 2" BSP Outlet. Optional Byelaw 30 kit available

WRAS approved

	Dimensions Dia. mm	Manhole Internal	Capacity Litres	Vented Insert Internal
CT1000 JA	1850 x 2305H	546 mm	4546	127 mm

2728 litres



CT0600 JA

above ground storage tank

Available Now from - Merlin Industrial Products Ltd - 0800 0418 650

2728L

WATER TANKS

Suitable for Potable Water (100% food grade material used throughout)

Hard wearing, one piece, stress free moulding

Manufactured from UV stabilised and frost resistant to -40 °C MDPE

Smooth hygienic surfaces

Built in lifting lugs and large Screw in lid

Flat area for fitting outlets and connections

Supplied with 2" BSP Outlet. Optional Byelaw 30 kit available

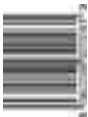
WRAS approved

	Dimensions Dia. mm	Manhole Internal	Capacity Litres	Vented Insert Internal
CT0600 JA	1850 x 1555H	546 mm	2728	127 mm

909L

WATER TANKS

909 litres



CT0200 JA above ground storage tank

Suitable for Potable Water (100% food grade material used throughout)

Hard wearing, one piece, stress free moulding

Manufactured from UV stabilised and frost resistant to -40 °C MDPE

Smooth hygienic surfaces

Built in lifting lugs and large Screw in lid

Flat area for fitting outlets and connections

Supplied with 2" BSP Outlet. Optional Byelaw 30 kit available

WRAS approved

	Dimensions Dia. mm	Manhole Internal	Capacity Litres	Vented Insert Internal
CT0200 JA	1308 x 1060H	546 mm	909	127 mm

Available Now from - Merlin Industrial Products Ltd - 0800 0418 650

10000L

WATER TANKS

10000 litres



CT2200 JB below ground storage tank

Available Now from - Merlin Industrial Products Ltd - 0800 0418 650

Suitable for Potable Water (100% food grade material used throughout)

Hard wearing, one piece, stress free moulding

Manufactured from UV stabilised and frost resistant to -40 °C MDPE

Smooth hygienic surfaces

Built in lifting lugs and large Screw in lid

Flat area for fitting outlets and connections

WRAS approved

	Dimensions Dia. mm	Manhole Internal	Capacity Litres	Vented Insert Internal
CT2200 JB	2515 x 2575H (2540 to top of dome)	546 mm	10000	127 mm

4546 litres



CT1000 JB below ground storage tank

4546L

WATER TANKS

Suitable for Potable Water (100% food grade material used throughout)

Hard wearing, one piece, stress free moulding

Manufactured from UV stabilised and frost resistant to -40 °C MDPE

Smooth hygienic surfaces

Built in lifting lugs and large Screw in lid

Flat area for fitting outlets and connections

WRAS approved

	Dimensions Dia. mm	Manhole Internal	Capacity Litres	Vented Insert Internal
CT1000 JB	1850 x 2305H	546 mm	4546	127 mm

Available Now from - Merlin Industrial Products Ltd - 0800 0418 650

2728 litres



CT0600 JB

below ground storage tank

Available Now from - Merlin Industrial Products Ltd - 0800 0418 650

2728L

WATER TANKS

Suitable for Potable Water (100% food grade material used throughout)

Hard wearing, one piece, stress free moulding

Manufactured from UV stabilised and frost resistant to -40 °C MDPE

Smooth hygienic surfaces

Built in lifting lugs and large Screw in lid

Flat area for fitting outlets and connections

WRAS approved

	Dimensions Dia. mm	Manhole Internal	Capacity Litres	Vented Insert Internal
CT0600 JB	1850 x 1555H	546 mm	2728	127 mm

909 litres



CT0200 JB below ground storage tank

909L

WATER TANKS

Suitable for Potable Water (100% food grade material used throughout)

Hard wearing, one piece, stress free moulding

Manufactured from UV stabilised and frost resistant to -40 °C MDPE

Smooth hygienic surfaces

Built in lifting lugs and large Screw in lid

Flat area for fitting outlets and connections

WRAS approved

	Dimensions Dia. mm	Manhole Internal	Capacity Litres	Vented Insert Internal
CT0200 JB	1308 x 1060H	546 mm	909	127 mm

Available Now from - Merlin Industrial Products Ltd - 0800 0418 650

250 litres



ST250V slim line tank

Available Now from - Merlin Industrial Products Ltd - 0800 0418 650

250L

WATER TANKS

Slim, space saving design

Fits through doorways & into narrow spaces

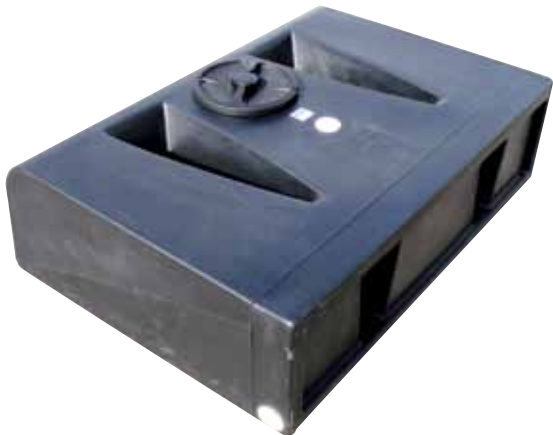
Large lid access for submersible pump

Tough and durable

Range of Colours available

	Dimensions mm	Weight Kg	Capacity Litres
ST250V	1190L x 330W x 830H	20	250

250 litres



ST250H slim line tanks

250L

WATER TANKS

Slim, space saving design

Fits through doorways & into narrow spaces

Large lid access for submersible pump

Tough and durable

Range of Colours available

	Dimensions mm	Weight Kg	Capacity Litres
ST250	1190L x 830W x 330H	20	250

Available Now from - Merlin Industrial Products Ltd - 0800 0418 650



120L

DAIRY HYGIENE

120 litres



Rectangular Self Standing Wash Trough with lid

120 litre capacity

Double skinned for superior heat retention

Suitable for holding circulation wash water

Calibrated internal markings

One piece construction and smooth 'easy clean' surface

38mm drainage outlet complete with plug

	Dimensions mm	Capacity Litres	Drainage Outlet
DHT1A	762L x 548W x 838H	120	Yes

DHT1A rectangular wash trough

Available Now from - Merlin Industrial Products Ltd - 0800 0418 650



227L

DAIRY HYGIENE

227 litres



DHT2A rectangular wash trough

Rectangular Self Standing Wash Trough with lid

227 litre capacity

Double skinned for superior heat retention

Suitable for holding circulation wash water

Calibrated internal markings

One piece construction and smooth 'easy clean' surface

38mm drainage outlet complete with plug

	Dimensions mm	Capacity Litres	Drainage Outlet
DHT2A	940L x 762W x 838H	227	Yes

Available Now from - Merlin Industrial Products Ltd - 0800 0418 650



91L

DAIRY HYGIENE



91 litres



Trough style Wash Troughs

91 litre capacity

Single skin one piece construction and smooth 'easy clean' surface

38mm drainage outlet complete with plug

	Dimensions mm	Capacity Litres	Drainage Outlet
HN27A	775L x 546W x 373H	91	Yes

HN27A trough style wash troughs

Available Now from - Merlin Industrial Products Ltd - 0800 0418 650



132L

DAIRY HYGIENE

132 litres



Trough style Wash Troughs

132 litre capacity

Single skin one piece construction and smooth 'easy clean' surface

38mm drainage outlet complete with plug

HN33A trough style wash troughs

	Dimensions mm	Capacity Litres	Drainage Outlet
HN33A	950L x 550W x 388H	132	Yes

Available Now from - Merlin Industrial Products Ltd - 0800 0418 650



209L

DAIRY HYGIENE

209 litres



Trough style Wash Troughs

209 litre capacity

Single skin one piece construction and smooth 'easy clean' surface

38mm drainage outlet complete with plug

	Dimensions mm	Capacity Litres	Drainage Outlet
HN36A	970L x 685W x 482H	209	Yes

HN36A trough style wash troughs

Available Now from - Merlin Industrial Products Ltd - 0800 0418 650



45L

DAIRY HYGIENE

45 litres



CH50 churn

Strong, lightweight design

45 litre capacity

Screw Cap lid

Steel grab handles

	Dimensions Dia. mm	Capacity Litres	Drainage Outlet
CH50	335 x 735H	45	NA

Available Now from - Merlin Industrial Products Ltd - 0800 0418 650

OTHER PRODUCTS



Solid, hard-wearing matting for protecting grassland

Simple to install

Prevents erosion on wet ground surrounding drinking troughs and feeders

UV & Frost Resistant

Textured surface for safe grip and reduced risk of injury

Preserves the natural environment as grass grows back through the tiles

Maintains natural drainage by allowing water through

	Dimensions (single tile) mm	Dimensions As Supplied (made up)	Surface Area Per Pallet	Load Bearing Capability
PERFO	200 x 200 x 37	1210 x 810 6 x 4 Perfo tiles	Approx. 54m ²	Up to 40 Tonnes/ m ² ±

PERFO ground stabilisation matting

Available Now from - Merlin Industrial Products Ltd - 0800 0418 650



Are PAXTON Agricultural products recyclable?

All our products are made from Polyethylene (PE) which is 100% recyclable.



What proportion of the products are recycled materials?

Various ratios of recycled polymer are used in our products dependent on colour, customer requirements and the intended application. When requested at the point of order we can usually guarantee a recycled content of 100% on black products.



Are Paxton products suitable for pigs?

In most cases Paxton products are fine for use by pigs, however, we do not guarantee them against being chewed.



What is the Byelaw 30 Kit?

The Byelaw 30 Kit is used in order to comply with the Byelaw 30 Regulation and is specifically used when connecting a tank to a mains water supply. The Byelaw 30 kit maintains the quality of the water in the tank.

The kit prevents water contamination with an insect proof screened vent and prevents back-flow of stored water into the mains (potable) supply.

Orders and delivery

All fully completed orders are processed within 24hrs. The majority of products are made to order. Please allow 2-3 weeks for delivery.

Materials

Durability

Moulded polyethylene (PE) is extremely durable with outstanding impact, fracture and shatter resistance properties. These mechanical properties are tested to BS 2782.

Manufacturing Standard

(As applicable) All Paxton products are manufactured to BS EN ISO 9001:2015.

Plastic materials: Mechanical properties tested to BS 2782.

Hot dipped galvanised: BS 729

Powder coating: BS 3900

Zinc coating: BS 1706

Weather Stability

PE is ideal for external applications. Materials used are UV stabilised to meet the demands of Northern Hemisphere weather conditions.

Maintenance Free

The solid body colour is permanently moulded-in, eliminating the need for maintenance painting. Units are wear resistant; scratches and parking nudges are less evident.

Recycling

Polyethylene (PE) is an environmentally friendly material and is 100% recyclable. Paxton products can be manufactured using recycled materials where appropriate.

Cleaning

Products should be flushed with clean water and then washed with a mild detergent solution using a bristle brush or sponge. Care should be taken not to apply undue pressure that may damage labels. Flush clean with water after washing.

Chemical Resistance

The material is resistant to most acids, salts and solvents. Environmental elements such as acid rain, soot, diesel fumes, salt and seawater will not corrode PE. Please visit our website for full details.

APPENDIX

Installation & User Guides

Copies of the following Installation and User Guides can be found on www.paxtonagri.co.uk

Sheep Dip Recommended Site Instructions

WT 75 & 120 Drinking Troughs

Perfo Ground Stabilisation Matting

Below Ground CT Water Tanks

Above Ground CT Water Tanks

Conversion Guide

To convert litres to gallons multiply by 0.219

To convert millimetres to inches multiply by 0.0394

Colours

As a special order, it is sometimes possible to produce other products in a colour shown in the chart. Please contact our Customer Services Department to discuss.

