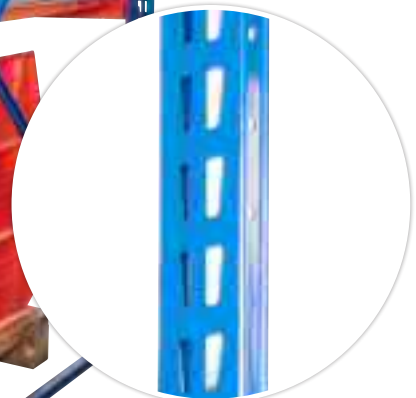


Extremely strong, heavy duty system that's easy to build

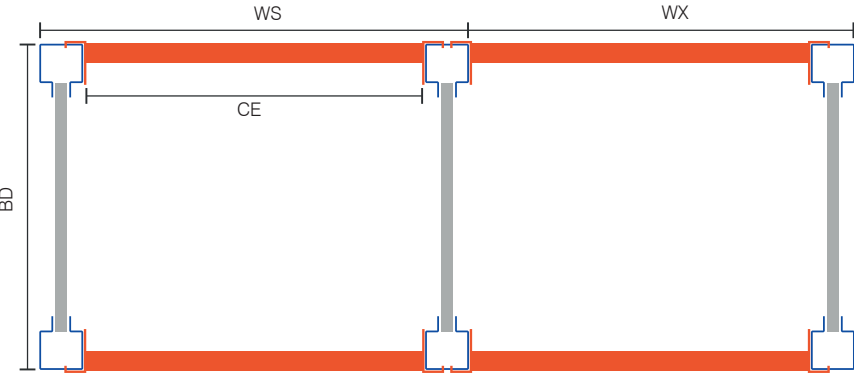


 <b>Heights</b>	 <b>Widths</b>	 <b>Depths</b>	 <b>Application</b>	 <b>Construction</b>	 <b>Loadings</b>
Standard Bay Height (mm) <b>1984, 2492, 3000, 3508, 4016</b>	Widths (mm) <b>1229, 1534, 1839, 2144, 2449, 2754</b>	Depths (mm) <b>471, 624, 776, 928, 1233</b>	Environment <b>Warehouse, Storeroom</b>  Usage <b>Heavy Duty Racking</b>	Frames: <b>Steel</b> Blue RAL5010  Beams: <b>Steel</b> Orange RAL2002  Shelves: <b>Chipboard Solid Steel Wire Mesh</b>	Shelf UDL up to <b>950kg</b>  Max Bay Load <b>3900kg</b>

Available from - Merlin Industrial Products Ltd - 0800 0418 650 - 2021

# Design and plan your TS Longspan Racking layout

### Calculating Exact Dimensions of the Bay & Run of Bays

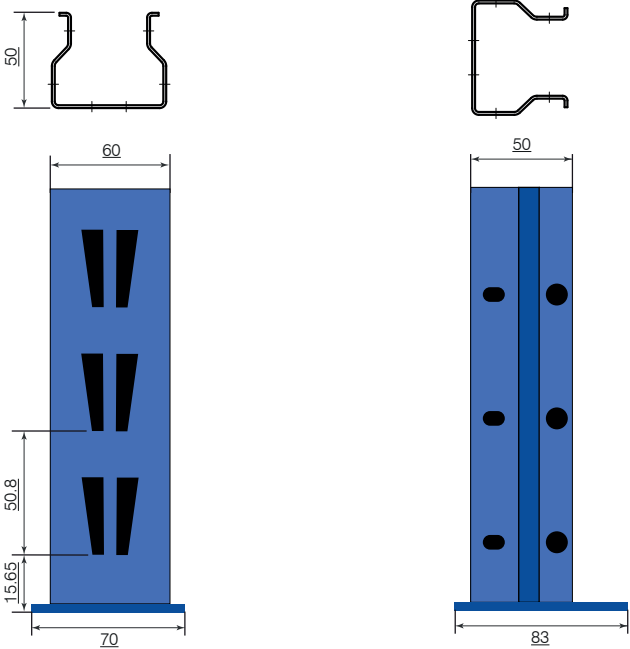


..add 3mm to dimension BD for each claw

Nominal Depth	BD Bay Depth	Nominal Width (W)	CE Clear Entry	WS Starter Bay	WX Extension Bay
471mm	471mm	1229mm	1229mm	1349mm	1289mm
624mm	624mm	1534mm	1534mm	1654mm	1594mm
776mm	776mm	1839mm	1839mm	1959mm	1899mm
928mm	928mm	2144mm	2144mm	2264mm	2204mm
1233mm	1233mm	2449mm	2449mm	2569mm	2509mm
		2754mm	2754mm	2874mm	2814mm

Add 10mm to over BD for footplate  
Add 10mm to overall run length for footplate

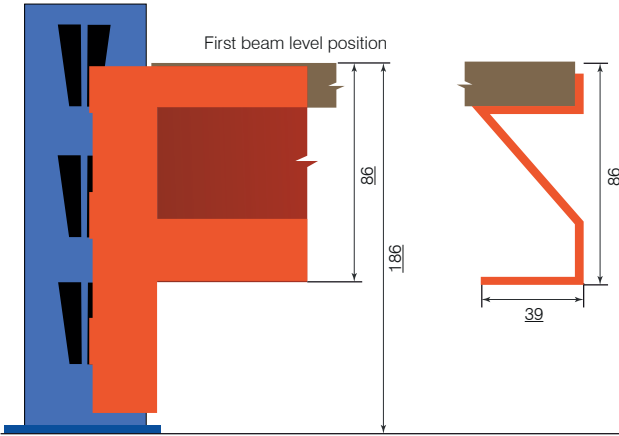
### Longspan Upright



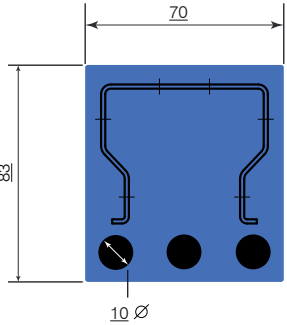
### Longspan Bay Loading (kgs)

Maximum bay load (kg)	600	700	800	900	1000	1100	1200
4100							
3900	3900						
3700		3700					
3500			3500				
3300				3300			
3100					3100		
2900						2900	
2700							2700

Distance between levels (mm)



### Longspan Footplate



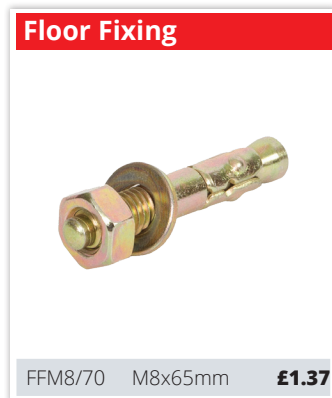
# TS Longspan Heavy Duty Racking

If you need a strong, robust and versatile solution, at a competitive price – then look no further.

The unique fit between the upright and claw gives our longspan racking incredible strength and rigidity. Along with our heavy duty “Z profile” beam which ensures it will meet the most rigorous demands.

All levels come with heavy duty deck supports as standard (except 471mm deep.) This ensures the chipboard, solid steel and wire mesh shelves carry the same load as the beams. The unique deck support slots into the beam which also eliminates the beams spreading or rotating.

- **NEW “Twin Slot” pattern on the upright**  
New larger upright profile 60x50mm with twin slots
- **Heavy duty Racking system**  
Store all your heavy and bulk items with ease
- **Adaptable storage solutions**  
Simple to add to, as your storage needs grow
- **Strong “Z” profile beam design**  
Unique beam design that offers capacities up to 950kgs
- **Heavy duty shelf levels**  
Shelf levels includes deck supports to match beam capacities
- **Guaranteed delivery in 5 days**  
Get your stores organised quickly with no hassle



from  
**£40.<sup>90</sup>**

**950**  
KG  
Shelf Load

**3900**  
KG  
Bay Load

CHIPBOARD DECKING

SOLID STEEL DECKING

WIRE MESH DECKING



Deck supports are supplied on Depth's of 610mm and greater.

ⓘ Remember, if your shelving's height to depth ratio is greater than 4:1, the bay should be fixed to the floor or to the wall!

Available from - Merlin Industrial Products Ltd - 0800 0418 650 - 2021

# TS Longspan Racking Frames & Levels

**i** Frame price includes 2x uprights with all necessary bracing and fixings – requires self assembly. **Beam level** is one complete level that includes 2x beams, (Chipboard, Solid Steel or Wire Mesh Decking) all necessary deck supports and safety pins. (Floor Fixings 'M8x65' / 'M8x70' available on request) Remember, if your shelving's height to depth ratio is greater than 4:1, the bay should be fixed to the floor or to the wall!

Frames			Levels		Beam Levels - Chipboard Decking				Beam Levels - Steel Decking				Beam Levels - Mesh Decking			
H x D(mm)	Code	Price	W x D(mm)	Code	Load (kg)	Deck Supports	Price		Code	Load (kg)	Deck Supports	Price	Code	Load (kg)	Deck Supports	Price
1984 x 471mm	TSF/20/04/BE	<b>£41.30</b>	1229 x 471mm	TSB/12/04/OR	950	0	<b>£40.90</b>		TSBSD/12/04/OR	480	0	<b>£69.90</b>	TSBWD/12/04/OR	350	£49.30	<b>£49.30</b>
2492 x 471mm	TSF/25/04/BE	<b>£62.05</b>	1534 x 471mm	TSB/15/04/OR	850	0	<b>£51.10</b>		TSBSD/15/04/OR	600	0	<b>£86.40</b>	TSBWD/15/04/OR	N/A	N/A	<b>N/A</b>
3000 x 471mm	TSF/30/04/BE	<b>£74.40</b>	1839 x 471mm	TSB/18/04/OR	800	0	<b>£60.45</b>		TSBSD/18/04/OR	720	0	<b>£102.80</b>	TSBWD/18/04/OR	700	£72.30	<b>£72.30</b>
3508 x 471mm	TSF/35/04/BE	<b>£86.75</b>	2144 x 471mm	TSB/21/04/OR	700	0	<b>£69.90</b>		TSBSD/21/04/OR	700	0	<b>£119.30</b>	TSBWD/21/04/OR	700	£83.45	<b>£83.45</b>
4016 x 471mm	TSF/40/04/BE	<b>£98.00</b>	2449 x 471mm	TSB/24/04/OR	600	0	<b>£79.10</b>		TSBSD/24/04/OR	600	0	<b>£135.60</b>	TSBWD/24/04/OR	600	£94.40	<b>£94.40</b>
			2754 x 471mm	TSB/27/04/OR	440	0	<b>£88.50</b>		TSBSD/27/04/OR	440	0	<b>£152.00</b>	TSBWD/27/04/OR	440	£106.25	<b>£106.25</b>
1984 x 624mm	TSF/20/06/BE	<b>£53.95</b>	1229 x 624mm	TSB/12/06/OR	900	3	<b>£53.35</b>		TSBSD/12/06/OR	480	2	<b>£84.10</b>	TSBWD/12/06/OR	350	£63.55	<b>£63.55</b>
2492 x 624mm	TSF/25/06/BE	<b>£67.25</b>	1534 x 624mm	TSB/15/06/OR	800	3	<b>£64.60</b>		TSBSD/15/06/OR	600	2	<b>£102.60</b>	TSBWD/15/06/OR	N/A	N/A	<b>N/A</b>
3000 x 624mm	TSF/30/06/BE	<b>£80.55</b>	1839 x 624mm	TSB/18/06/OR	800	3	<b>£74.80</b>		TSBSD/18/06/OR	720	2	<b>£121.00</b>	TSBWD/18/06/OR	700	£89.20	<b>£89.20</b>
3508 x 624mm	TSF/35/06/BE	<b>£93.85</b>	2144 x 624mm	TSB/21/06/OR	700	3	<b>£85.10</b>		TSBSD/21/06/OR	700	2	<b>£139.50</b>	TSBWD/21/06/OR	700	£104.60	<b>£104.60</b>
4016 x 624mm	TSF/40/06/BE	<b>£106.05</b>	2449 x 624mm	TSB/24/06/OR	600	4	<b>£98.25</b>		TSBSD/24/06/OR	600	2	<b>£157.80</b>	TSBWD/24/06/OR	600	£116.70	<b>£116.70</b>
			2754 x 624mm	TSB/27/06/OR	440	5	<b>£111.60</b>		TSBSD/27/06/OR	440	2	<b>£176.20</b>	TSBWD/27/06/OR	440	£133.15	<b>£133.15</b>
1984 x 776mm	TSF/20/07/BE	<b>£57.15</b>	1229 x 776mm	TSB/12/07/OR	875	3	<b>£60.30</b>		TSBSD/12/07/OR	480	2	<b>£92.60</b>	TSBWD/12/07/OR	325	£72.10	<b>£72.10</b>
2492 x 776mm	TSF/25/07/BE	<b>£71.05</b>	1534 x 776mm	TSB/15/07/OR	775	3	<b>£71.40</b>		TSBSD/15/07/OR	600	2	<b>£112.80</b>	TSBWD/15/07/OR	N/A	N/A	<b>N/A</b>
3000 x 776mm	TSF/30/07/BE	<b>£84.95</b>	1839 x 776mm	TSB/18/07/OR	800	3	<b>£82.45</b>		TSBSD/18/07/OR	720	2	<b>£132.90</b>	TSBWD/18/07/OR	650	£100.75	<b>£100.75</b>
3508 x 776mm	TSF/35/07/BE	<b>£98.85</b>	2144 x 776mm	TSB/21/07/OR	700	4	<b>£93.60</b>		TSBSD/21/07/OR	700	2	<b>£153.10</b>	TSBWD/21/07/OR	650	£118.50	<b>£118.50</b>
4016 x 776mm	TSF/40/07/BE	<b>£111.65</b>	2449 x 776mm	TSB/24/07/OR	575	4	<b>£108.45</b>		TSBSD/24/07/OR	600	2	<b>£173.10</b>	TSBWD/24/07/OR	600	£132.10	<b>£132.10</b>
			2754 x 776mm	TSB/27/07/OR	440	5	<b>£123.45</b>		TSBSD/27/07/OR	440	2	<b>£193.20</b>	TSBWD/27/07/OR	440	£150.90	<b>£150.90</b>
1984 x 928mm	TSF/20/09/BE	<b>£55.95</b>	1229 x 928mm	TSB/12/09/OR	825	3	<b>£65.90</b>		TSBSD/12/09/OR	400	2	<b>£101.70</b>	TSBWD/12/09/OR	300	£79.25	<b>£79.25</b>
2492 x 928mm	TSF/25/09/BE	<b>£70.40</b>	1534 x 928mm	TSB/15/09/OR	725	3	<b>£77.90</b>		TSBSD/15/09/OR	500	2	<b>£123.80</b>	TSBWD/15/09/OR	N/A	N/A	<b>N/A</b>
3000 x 928mm	TSF/30/09/BE	<b>£84.55</b>	1839 x 928mm	TSB/18/09/OR	800	3	<b>£89.75</b>		TSBSD/18/09/OR	600	2	<b>£145.80</b>	TSBWD/18/09/OR	600	£110.50	<b>£110.50</b>
3508 x 928mm	TSF/35/09/BE	<b>£99.00</b>	2144 x 928mm	TSB/21/09/OR	675	4	<b>£106.45</b>		TSBSD/21/09/OR	700	2	<b>£167.90</b>	TSBWD/21/09/OR	600	£130.15	<b>£130.15</b>
4016 x 928mm	TSF/40/09/BE	<b>£107.55</b>	2449 x 928mm	TSB/24/09/OR	550	4	<b>£118.20</b>		TSBSD/24/09/OR	600	2	<b>£189.80</b>	TSBWD/24/09/OR	600	£144.90	<b>£144.90</b>
			2754 x 928mm	TSB/27/09/OR	440	5	<b>£134.80</b>		TSBSD/27/09/OR	440	2	<b>£211.80</b>	TSBWD/27/09/OR	440	£165.90	<b>£165.90</b>
1984 x 1233mm	TSF/20/12/BE	<b>£60.85</b>	1229 x 1233mm	TSB/12/12/OR	750	3	<b>£77.65</b>		TSBSD/12/12/OR	360	2	<b>£120.00</b>	TSBWD/12/12/OR	250	£95.30	<b>£95.30</b>
2492 x 1233mm	TSF/25/12/BE	<b>£76.65</b>	1534 x 1233mm	TSB/15/12/OR	675	3	<b>£91.30</b>		TSBSD/15/12/OR	450	2	<b>£145.85</b>	TSBWD/15/12/OR	N/A	N/A	<b>N/A</b>
3000 x 1233mm	TSF/30/12/BE	<b>£91.90</b>	1839 x 1233mm	TSB/18/12/OR	750	3	<b>£104.85</b>		TSBSD/18/12/OR	540	2	<b>£171.60</b>	TSBWD/18/12/OR	500	£131.55	<b>£131.55</b>
3508 x 1233mm	TSF/35/12/BE	<b>£107.70</b>	2144 x 1233mm	TSB/21/12/OR	625	5	<b>£131.25</b>		TSBSD/21/12/OR	630	2	<b>£197.45</b>	TSBWD/21/12/OR	500	£155.90	<b>£155.90</b>
4016 x 1233mm	TSF/40/12/BE	<b>£116.00</b>	2449 x 1233mm	TSB/24/12/OR	525	5	<b>£144.70</b>		TSBSD/24/12/OR	600	2	<b>£223.10</b>	TSBWD/24/12/OR	500	£173.70	<b>£173.70</b>
			2754 x 1233mm	TSB/27/12/OR	440	5	<b>£158.35</b>		TSBSD/27/12/OR	440	2	<b>£248.85</b>	TSBWD/27/12/OR	440	£198.30	<b>£198.30</b>



**i** Don't require deck supports? Call us for a revised price.

Available from - Merlin Industrial Products Ltd - 0800 0418 650 - 2021



# TS Longspan Racking Chipboard Decking

Pricing based on **3 levels**

Starter Bay - Chipboard decking			Extension Bay - Chipboard Decking		Extra Levels - Chipboard Decking		
Size (HxWxD) mm	Code	Price	Code	Price	Level Code	Load(kg)	Level Price
1984x1229x471	TNBS/201204/3/BO	<b>£205.30</b>	TNBE/201204/3/BO	<b>£164.35</b>	TSB/12/04/OR	950	<b>£40.90</b>
1984x1534x471	TNBS/201504/3/BO	<b>£235.90</b>	TNBE/201504/3/BO	<b>£194.95</b>	TSB/15/04/OR	850	<b>£51.10</b>
1984x1839x471	TNBS/201804/3/BO	<b>£263.95</b>	TNBE/201804/3/BO	<b>£223.00</b>	TSB/18/04/OR	800	<b>£60.45</b>
1984x2144x471	TNBS/202104/3/BO	<b>£292.30</b>	TNBE/202104/3/BO	<b>£251.35</b>	TSB/21/04/OR	700	<b>£69.90</b>
1984x2449x471	TNBS/202404/3/BO	<b>£319.90</b>	TNBE/202404/3/BO	<b>£278.95</b>	TSB/24/04/OR	600	<b>£79.10</b>
1984x2754x471	TNBS/202704/3/BO	<b>£348.10</b>	TNBE/202704/3/BO	<b>£307.15</b>	TSB/27/04/OR	440	<b>£88.50</b>
1984x1229x624	TNBS/201206/3/BO	<b>£267.95</b>	TNBE/201206/3/BO	<b>£214.35</b>	TSB/12/06/OR	900	<b>£53.35</b>
1984x1534x624	TNBS/201506/3/BO	<b>£301.70</b>	TNBE/201506/3/BO	<b>£248.10</b>	TSB/15/06/OR	800	<b>£64.60</b>
1984x1839x624	TNBS/201806/3/BO	<b>£332.30</b>	TNBE/201806/3/BO	<b>£278.70</b>	TSB/18/06/OR	800	<b>£74.80</b>
1984x2144x624	TNBS/202106/3/BO	<b>£363.20</b>	TNBE/202106/3/BO	<b>£309.60</b>	TSB/21/06/OR	700	<b>£85.10</b>
1984x2449x624	TNBS/202406/3/BO	<b>£402.65</b>	TNBE/202406/3/BO	<b>£349.05</b>	TSB/24/06/OR	600	<b>£98.25</b>
1984x2754x624	TNBS/202706/3/BO	<b>£442.70</b>	TNBE/202706/3/BO	<b>£389.10</b>	TSB/27/06/OR	440	<b>£111.60</b>
1984x1229x776	TNBS/201207/3/BO	<b>£295.20</b>	TNBE/201207/3/BO	<b>£238.40</b>	TSB/12/07/OR	875	<b>£60.30</b>
1984x1534x776	TNBS/201507/3/BO	<b>£328.50</b>	TNBE/201507/3/BO	<b>£271.70</b>	TSB/15/07/OR	775	<b>£71.40</b>
1984x1839x776	TNBS/201807/3/BO	<b>£361.65</b>	TNBE/201807/3/BO	<b>£304.85</b>	TSB/18/07/OR	800	<b>£82.45</b>
1984x2144x776	TNBS/202107/3/BO	<b>£395.10</b>	TNBE/202107/3/BO	<b>£338.30</b>	TSB/21/07/OR	700	<b>£93.60</b>
1984x2449x776	TNBS/202407/3/BO	<b>£439.65</b>	TNBE/202407/3/BO	<b>£382.85</b>	TSB/24/07/OR	575	<b>£108.45</b>
1984x2754x776	TNBS/202707/3/BO	<b>£484.65</b>	TNBE/202707/3/BO	<b>£427.85</b>	TSB/27/07/OR	440	<b>£123.45</b>
1984x1229x928	TNBS/201209/3/BO	<b>£309.60</b>	TNBE/201209/3/BO	<b>£254.35</b>	TSB/12/09/OR	825	<b>£65.90</b>
1984x1534x928	TNBS/201509/3/BO	<b>£345.60</b>	TNBE/201509/3/BO	<b>£290.35</b>	TSB/15/09/OR	725	<b>£77.90</b>
1984x1839x928	TNBS/201809/3/BO	<b>£381.15</b>	TNBE/201809/3/BO	<b>£325.90</b>	TSB/18/09/OR	800	<b>£89.75</b>
1984x2144x928	TNBS/202109/3/BO	<b>£431.25</b>	TNBE/202109/3/BO	<b>£390.10</b>	TSB/21/09/OR	675	<b>£106.45</b>
1984x2449x928	TNBS/202409/3/BO	<b>£466.50</b>	TNBE/202409/3/BO	<b>£411.25</b>	TSB/24/09/OR	550	<b>£118.20</b>
1984x2754x928	TNBS/202709/3/BO	<b>£516.30</b>	TNBE/202709/3/BO	<b>£461.05</b>	TSB/27/09/OR	440	<b>£134.80</b>
1984x1229x1233	TNBS/201212/3/BO	<b>£354.65</b>	TNBE/201212/3/BO	<b>£294.50</b>	TSB/12/12/OR	750	<b>£77.65</b>
1984x1534x1233	TNBS/201512/3/BO	<b>£395.60</b>	TNBE/201512/3/BO	<b>£335.45</b>	TSB/15/12/OR	675	<b>£91.30</b>
1984x1839x1233	TNBS/201812/3/BO	<b>£436.25</b>	TNBE/201812/3/BO	<b>£376.10</b>	TSB/18/12/OR	750	<b>£104.85</b>
1984x2144x1233	TNBS/202112/3/BO	<b>£515.45</b>	TNBE/202112/3/BO	<b>£455.30</b>	TSB/21/12/OR	625	<b>£131.25</b>
1984x2449x1233	TNBS/202412/3/BO	<b>£555.80</b>	TNBE/202412/3/BO	<b>£495.65</b>	TSB/24/12/OR	525	<b>£144.70</b>
1984x2754x1233	TNBS/202712/3/BO	<b>£596.75</b>	TNBE/202712/3/BO	<b>£536.60</b>	TSB/27/12/OR	440	<b>£158.35</b>

① Starter Price includes 2x Frame and 3x Beam Levels. Extension price includes 1x Frame and 3x Beam Levels. Frame includes 2x uprights with all necessary bracing and fixings (*Assembly Required*). Beam level includes 2x beams, chipboard decking, all necessary deck supports and safety pins. To configure your own bay with a selection of frames and beams, turn to page 5

For Taller Bays Add Prices as shown below:

For starter bays please add 2 x extra height price  
For extension bays please add 1 x extra height price

Extra Height - 471mm deep			Extra Height - 624mm deep			Extra Height - 776mm deep			Extra Height - 928mm deep			Extra Height - 1233mm deep		
H x D(mm)	Code	Price	H x D(mm)	Code	Price	H x D(mm)	Code	Price	H x D(mm)	Code	Price	H x D(mm)	Code	Price
2492 x 471	---/25-04/3/BO	<b>£20.75</b>	2492 x 624	---/25-06/3/BO	<b>£13.30</b>	2492 x 776	---/25-07/3/BO	<b>£13.90</b>	2492 x 928	---/25-09/3/BO	<b>£14.45</b>	2492 x 1233	---/25-12/3/BO	<b>£15.80</b>
3000 x 471	---/30-04/3/BO	<b>£33.10</b>	3000 x 624	---/30-06/3/BO	<b>£26.60</b>	3000 x 776	---/30-07/3/BO	<b>£27.80</b>	3000 x 928	---/30-09/3/BO	<b>£28.60</b>	3000 x 1233	---/30-12/3/BO	<b>£31.05</b>
3508 x 471	---/35-04/3/BO	<b>£45.45</b>	3508 x 624	---/35-06/3/BO	<b>£39.90</b>	3508 x 776	---/35-07/3/BO	<b>£41.70</b>	3508 x 928	---/35-09/3/BO	<b>£43.05</b>	3508 x 1233	---/35-12/3/BO	<b>£46.85</b>
4016 x 471	---/40-04/3/BO	<b>£56.70</b>	4016 x 624	---/40-06/3/BO	<b>£52.10</b>	4016 x 776	---/40-07/3/BO	<b>£54.50</b>	4016 x 928	---/40-09/3/BO	<b>£51.60</b>	4016 x 1233	---/40-12/3/BO	<b>£55.15</b>

① Remember, if your shelving's height to depth ratio is greater than 4:1, the bay should be fixed to the floor or to the wall!  
Available from - Merlin Industrial Products Ltd - 0800 0418 650 - 2021



# TS Longspan Racking Solid Steel Decking

**NEW PRODUCT!**

Pricing based on **3 levels**

Starter Bay - Solid steel decking			Extension Bay - Solid Steel Decking			Extra Levels - Solid Steel Decking		
Size (HxWxD) mm	Code	Price	Code	Price		Level Code	Load(kg)	Level Price
1984x1229x471	TNBSSD/201204/3/BO	<b>£292.30</b>	TNBESD/201204/3/BO	<b>£251.00</b>		TSBSD/12/04/OR	480	<b>£69.90</b>
1984x1534x471	TNBSSD/201504/3/BO	<b>£341.80</b>	TNBESD/201504/3/BO	<b>£300.50</b>		TSBSD/15/04/OR	600	<b>£86.40</b>
1984x1839x471	TNBSSD/201804/3/BO	<b>£391.00</b>	TNBESD/201804/3/BO	<b>£349.70</b>		TSBSD/18/04/OR	720	<b>£102.80</b>
1984x2144x471	TNBSSD/202104/3/BO	<b>£440.50</b>	TNBESD/202104/3/BO	<b>£399.20</b>		TSBSD/21/04/OR	700	<b>£119.30</b>
1984x2449x471	TNBSSD/202404/3/BO	<b>£489.40</b>	TNBESD/202404/3/BO	<b>£448.10</b>		TSBSD/24/04/OR	600	<b>£135.60</b>
1984x2754x471	TNBSSD/202704/3/BO	<b>£538.60</b>	TNBESD/202704/3/BO	<b>£497.30</b>		TSBSD/27/04/OR	440	<b>£152.00</b>
1984x1229x624	TNBSSD/201206/3/BO	<b>£360.20</b>	TNBESD/201206/3/BO	<b>£306.25</b>		TSBSD/12/06/OR	480	<b>£84.10</b>
1984x1534x624	TNBSSD/201506/3/BO	<b>£415.70</b>	TNBESD/201506/3/BO	<b>£361.75</b>		TSBSD/15/06/OR	600	<b>£102.60</b>
1984x1839x624	TNBSSD/201806/3/BO	<b>£470.90</b>	TNBESD/201806/3/BO	<b>£416.95</b>		TSBSD/18/06/OR	720	<b>£121.00</b>
1984x2144x624	TNBSSD/202106/3/BO	<b>£526.40</b>	TNBESD/202106/3/BO	<b>£472.45</b>		TSBSD/21/06/OR	700	<b>£139.50</b>
1984x2449x624	TNBSSD/202406/3/BO	<b>£581.30</b>	TNBESD/202406/3/BO	<b>£527.35</b>		TSBSD/24/06/OR	600	<b>£157.80</b>
1984x2754x624	TNBSSD/202706/3/BO	<b>£636.50</b>	TNBESD/202706/3/BO	<b>£582.55</b>		TSBSD/27/06/OR	440	<b>£176.20</b>
1984x1229x776	TNBSSD/201207/3/BO	<b>£392.10</b>	TNBESD/201207/3/BO	<b>£334.95</b>		TSBSD/12/07/OR	480	<b>£92.60</b>
1984x1534x776	TNBSSD/201507/3/BO	<b>£452.70</b>	TNBESD/201507/3/BO	<b>£395.55</b>		TSBSD/15/07/OR	600	<b>£112.80</b>
1984x1839x776	TNBSSD/201807/3/BO	<b>£513.00</b>	TNBESD/201807/3/BO	<b>£455.85</b>		TSBSD/18/07/OR	720	<b>£132.90</b>
1984x2144x776	TNBSSD/202107/3/BO	<b>£573.60</b>	TNBESD/202107/3/BO	<b>£516.45</b>		TSBSD/21/07/OR	700	<b>£153.10</b>
1984x2449x776	TNBSSD/202407/3/BO	<b>£633.60</b>	TNBESD/202407/3/BO	<b>£576.45</b>		TSBSD/24/07/OR	600	<b>£173.10</b>
1984x2754x776	TNBSSD/202707/3/BO	<b>£693.90</b>	TNBESD/202707/3/BO	<b>£636.75</b>		TSBSD/27/07/OR	440	<b>£193.20</b>
1984x1229x928	TNBSSD/201209/3/BO	<b>£417.00</b>	TNBESD/201209/3/BO	<b>£361.05</b>		TSBSD/12/09/OR	400	<b>£101.70</b>
1984x1534x928	TNBSSD/201509/3/BO	<b>£483.30</b>	TNBESD/201509/3/BO	<b>£427.35</b>		TSBSD/15/09/OR	500	<b>£123.80</b>
1984x1839x928	TNBSSD/201809/3/BO	<b>£549.30</b>	TNBESD/201809/3/BO	<b>£493.35</b>		TSBSD/18/09/OR	600	<b>£145.80</b>
1984x2144x928	TNBSSD/202109/3/BO	<b>£615.60</b>	TNBESD/202109/3/BO	<b>£559.65</b>		TSBSD/21/09/OR	700	<b>£167.90</b>
1984x2449x928	TNBSSD/202409/3/BO	<b>£681.30</b>	TNBESD/202409/3/BO	<b>£625.35</b>		TSBSD/24/09/OR	600	<b>£189.80</b>
1984x2754x928	TNBSSD/202709/3/BO	<b>£747.30</b>	TNBESD/202709/3/BO	<b>£691.35</b>		TSBSD/27/09/OR	440	<b>£211.80</b>
1984x1229x1233	TNBSSD/201212/3/BO	<b>£481.70</b>	TNBESD/201212/3/BO	<b>£420.85</b>		TSBSD/12/12/OR	360	<b>£120.00</b>
1984x1534x1233	TNBSSD/201512/3/BO	<b>£559.25</b>	TNBESD/201512/3/BO	<b>£498.40</b>		TSBSD/15/12/OR	450	<b>£145.85</b>
1984x1839x1233	TNBSSD/201812/3/BO	<b>£636.50</b>	TNBESD/201812/3/BO	<b>£575.65</b>		TSBSD/18/12/OR	540	<b>£171.60</b>
1984x2144x1233	TNBSSD/202112/3/BO	<b>£714.05</b>	TNBESD/202112/3/BO	<b>£653.20</b>		TSBSD/21/12/OR	630	<b>£197.45</b>
1984x2449x1233	TNBSSD/202412/3/BO	<b>£791.00</b>	TNBESD/202412/3/BO	<b>£730.15</b>		TSBSD/24/12/OR	600	<b>£223.10</b>
1984x2754x1233	TNBSSD/202712/3/BO	<b>£868.25</b>	TNBESD/202712/3/BO	<b>£807.40</b>		TSBSD/27/12/OR	440	<b>£248.85</b>

① Starter Price includes 2x Frame and 3x Beam Levels. Extension price includes 1x Frame and 3x Beam Levels. Frame includes 2x uprights with all necessary bracing and fixings. (Assembly Required) Beam level includes 2x beams, steel decking, all necessary deck supports and safety pins. To configure your own bay with a selection of frames and beams, turn to page 5

For Taller Bays Add Prices as shown below:

For starter bays please add 2 x extra height price  
For extension bays please add 1 x extra height price

Extra Height - 471mm deep			Extra Height - 624mm deep			Extra Height - 776mm deep			Extra Height - 928mm deep			Extra Height - 1233mm deep		
H x D(mm)	Code	Price	H x D(mm)	Code	Price	H x D(mm)	Code	Price	H x D(mm)	Code	Price	H x D(mm)	Code	Price
2492 x 471	---/25-04/3/BO	<b>£20.75</b>	2492 x 624	---/25-06/3/BO	<b>£13.30</b>	2492 x 776	---/25-07/3/BO	<b>£13.90</b>	2492 x 928	---/25-09/3/BO	<b>£14.45</b>	2492 x 1233	---/25-12/3/BO	<b>£15.80</b>
3000 x 471	---/30-04/3/BO	<b>£33.10</b>	3000 x 624	---/30-06/3/BO	<b>£26.60</b>	3000 x 776	---/30-07/3/BO	<b>£27.80</b>	3000 x 928	---/30-09/3/BO	<b>£28.60</b>	3000 x 1233	---/30-12/3/BO	<b>£31.05</b>
3508 x 471	---/35-04/3/BO	<b>£45.45</b>	3508 x 624	---/35-06/3/BO	<b>£39.90</b>	3508 x 776	---/35-07/3/BO	<b>£41.70</b>	3508 x 928	---/35-09/3/BO	<b>£43.05</b>	3508 x 1233	---/35-12/3/BO	<b>£46.85</b>
4016 x 471	---/40-04/3/BO	<b>£56.70</b>	4016 x 624	---/40-06/3/BO	<b>£52.10</b>	4016 x 776	---/40-07/3/BO	<b>£54.50</b>	4016 x 928	---/40-09/3/BO	<b>£51.60</b>	4016 x 1233	---/40-12/3/BO	<b>£55.15</b>



① Don't require deck supports? Call us for a revised price.

Available from - Merlin Industrial Products Ltd - 0800 0418 650 - 2021



TS LONGSPAN BAY PRICING

# TS Longspan Racking Wire Mesh Decking

**NEW PRODUCT!**

Pricing based on **3 levels**

Starter Bay - Mesh decking		
Size (HxWxD) mm	Code	Price
1984x1229x471	TNBSWD/201204/3/BO	<b>£230.50</b>
1984x1534x471	TNBSWD/201504/3/BO	<b>N/A</b>
1984x1839x471	TNBSWD/201804/3/BO	<b>£299.50</b>
1984x2144x471	TNBSWD/202104/3/BO	<b>£332.95</b>
1984x2449x471	TNBSWD/202404/3/BO	<b>£365.80</b>
1984x2754x471	TNBSWD/202704/3/BO	<b>£401.35</b>

1984x1229x624	TNBSWD/201206/3/BO	<b>£298.55</b>
1984x1534x624	TNBSWD/201506/3/BO	<b>N/A</b>
1984x1839x624	TNBSWD/201806/3/BO	<b>£375.50</b>
1984x2144x624	TNBSWD/202106/3/BO	<b>£421.70</b>
1984x2449x624	TNBSWD/202406/3/BO	<b>£458.00</b>
1984x2754x624	TNBSWD/202706/3/BO	<b>£507.35</b>

1984x1229x776	TNBSWD/201207/3/BO	<b>£330.60</b>
1984x1534x776	TNBSWD/201507/3/BO	<b>N/A</b>
1984x1839x776	TNBSWD/201807/3/BO	<b>£416.55</b>
1984x2144x776	TNBSWD/202107/3/BO	<b>£469.80</b>
1984x2449x776	TNBSWD/202407/3/BO	<b>£510.60</b>
1984x2754x776	TNBSWD/202707/3/BO	<b>£567.00</b>

1984x1229x928	TNBSWD/201209/3/BO	<b>£349.65</b>
1984x1534x928	TNBSWD/201509/3/BO	<b>N/A</b>
1984x1839x928	TNBSWD/201809/3/BO	<b>£443.40</b>
1984x2144x928	TNBSWD/202109/3/BO	<b>£502.35</b>
1984x2449x928	TNBSWD/202409/3/BO	<b>£546.60</b>
1984x2754x928	TNBSWD/202709/3/BO	<b>£609.60</b>

1984x1229x1233	TNBSWD/201212/3/BO	<b>£407.60</b>
1984x1534x1233	TNBSWD/201512/3/BO	<b>N/A</b>
1984x1839x1233	TNBSWD/201812/3/BO	<b>£516.35</b>
1984x2144x1233	TNBSWD/202112/3/BO	<b>£589.40</b>
1984x2449x1233	TNBSWD/202412/3/BO	<b>£642.80</b>
1984x2754x1233	TNBSWD/202712/3/BO	<b>£716.60</b>

Extension Bay - Mesh Decking	
Code	Price
TNBEWD/201204/3/BO	<b>£189.20</b>
TNBEWD/201504/3/BO	<b>N/A</b>
TNBEWD/201804/3/BO	<b>£258.20</b>
TNBEWD/202104/3/BO	<b>£291.65</b>
TNBEWD/202404/3/BO	<b>£324.50</b>
TNBEWD/202704/3/BO	<b>£360.05</b>

TNBEWD/201206/3/BO	<b>£244.60</b>
TNBEWD/201506/3/BO	<b>N/A</b>
TNBEWD/201806/3/BO	<b>£321.55</b>
TNBEWD/202106/3/BO	<b>£367.75</b>
TNBEWD/202406/3/BO	<b>£404.05</b>
TNBEWD/202706/3/BO	<b>£453.40</b>

TNBEWD/201207/3/BO	<b>£273.45</b>
TNBEWD/201507/3/BO	<b>N/A</b>
TNBEWD/201807/3/BO	<b>£359.40</b>
TNBEWD/202107/3/BO	<b>£412.65</b>
TNBEWD/202407/3/BO	<b>£453.45</b>
TNBEWD/202707/3/BO	<b>£509.85</b>

TNBEWD/201209/3/BO	<b>£293.70</b>
TNBEWD/201509/3/BO	<b>N/A</b>
TNBEWD/201809/3/BO	<b>£387.45</b>
TNBEWD/202109/3/BO	<b>£446.40</b>
TNBEWD/202409/3/BO	<b>£490.65</b>
TNBEWD/202709/3/BO	<b>£553.65</b>

TNBEWD/201212/3/BO	<b>£346.75</b>
TNBEWD/201512/3/BO	<b>N/A</b>
TNBEWD/201812/3/BO	<b>£455.50</b>
TNBEWD/202112/3/BO	<b>£528.55</b>
TNBEWD/202412/3/BO	<b>£581.95</b>
TNBEWD/202712/3/BO	<b>£655.75</b>

Extra Levels - Mesh Decking		
Level Code	Load(kg)	Level Price
TSBWD/12/04/OR	350	<b>£49.30</b>
TSBWD/15/04/OR	N/A	<b>N/A</b>
TSBWD/18/04/OR	700	<b>£72.30</b>
TSBWD/21/04/OR	700	<b>£83.45</b>
TSBWD/24/04/OR	600	<b>£94.40</b>
TSBWD/27/04/OR	440	<b>£106.25</b>

TSBWD/12/06/OR	350	<b>£63.55</b>
TSBWD/15/06/OR	N/A	<b>N/A</b>
TSBWD/18/06/OR	700	<b>£89.20</b>
TSBWD/21/06/OR	700	<b>£104.60</b>
TSBWD/24/06/OR	600	<b>£116.70</b>
TSBWD/27/06/OR	440	<b>£133.15</b>

TSBWD/12/07/OR	325	<b>£72.10</b>
TSBWD/15/07/OR	N/A	<b>N/A</b>
TSBWD/18/07/OR	650	<b>£100.75</b>
TSBWD/21/07/OR	650	<b>£118.50</b>
TSBWD/24/07/OR	600	<b>£132.10</b>
TSBWD/27/07/OR	440	<b>£150.90</b>

TSBWD/12/09/OR	300	<b>£79.25</b>
TSBWD/15/09/OR	N/A	<b>N/A</b>
TSBWD/18/09/OR	600	<b>£110.50</b>
TSBWD/21/09/OR	600	<b>£130.15</b>
TSBWD/24/09/OR	600	<b>£144.90</b>
TSBWD/27/09/OR	440	<b>£165.90</b>

TSBWD/12/12/OR	250	<b>£95.30</b>
TSBWD/15/12/OR	N/A	<b>N/A</b>
TSBWD/18/12/OR	500	<b>£131.55</b>
TSBWD/21/12/OR	500	<b>£155.90</b>
TSBWD/24/12/OR	500	<b>£173.70</b>
TSBWD/27/12/OR	440	<b>£198.30</b>

**i** Starter Price includes 2x Frame and 3x Beam Levels. Extension price includes 1x Frame and 3x Beam Levels. Frame includes 2x uprights with all necessary bracing and fixings (*Assembly Required*). Beam level includes 2x beams, mesh decking, all necessary deck supports and safety pins  
**To configure your own bay with a selection of frames and beams, turn to page 5**

For Taller Bays Add Prices as shown below:

For starter bays please add 2 x extra height price  
 For extension bays please add 1 x extra height price

Extra Height - 471mm deep			Extra Height - 624mm deep			Extra Height - 776mm deep			Extra Height - 928mm deep			Extra Height - 1233mm deep		
H x D(mm)	Code	Price	H x D(mm)	Code	Price	H x D(mm)	Code	Price	H x D(mm)	Code	Price	H x D(mm)	Code	Price
2492 x 471	---/25-04/3/BO	<b>£20.75</b>	2492 x 624	---/25-06/3/BO	<b>£13.30</b>	2492 x 776	---/25-07/3/BO	<b>£13.90</b>	2492 x 928	---/25-09/3/BO	<b>£14.45</b>	2492 x 1233	---/25-12/3/BO	<b>£15.80</b>
3000 x 471	---/30-04/3/BO	<b>£33.10</b>	3000 x 624	---/30-06/3/BO	<b>£26.60</b>	3000 x 776	---/30-07/3/BO	<b>£27.80</b>	3000 x 928	---/30-09/3/BO	<b>£28.60</b>	3000 x 1233	---/30-12/3/BO	<b>£31.05</b>
3508 x 471	---/35-04/3/BO	<b>£45.45</b>	3508 x 624	---/35-06/3/BO	<b>£39.90</b>	3508 x 776	---/35-07/3/BO	<b>£41.70</b>	3508 x 928	---/35-09/3/BO	<b>£43.05</b>	3508 x 1233	---/35-12/3/BO	<b>£46.85</b>
4016 x 471	---/40-04/3/BO	<b>£56.70</b>	4016 x 624	---/40-06/3/BO	<b>£52.10</b>	4016 x 776	---/40-07/3/BO	<b>£54.50</b>	4016 x 928	---/40-09/3/BO	<b>£51.60</b>	4016 x 1233	---/40-12/3/BO	<b>£55.15</b>

from **£189.<sup>20</sup>**

**700 KG**  
Shelf Load

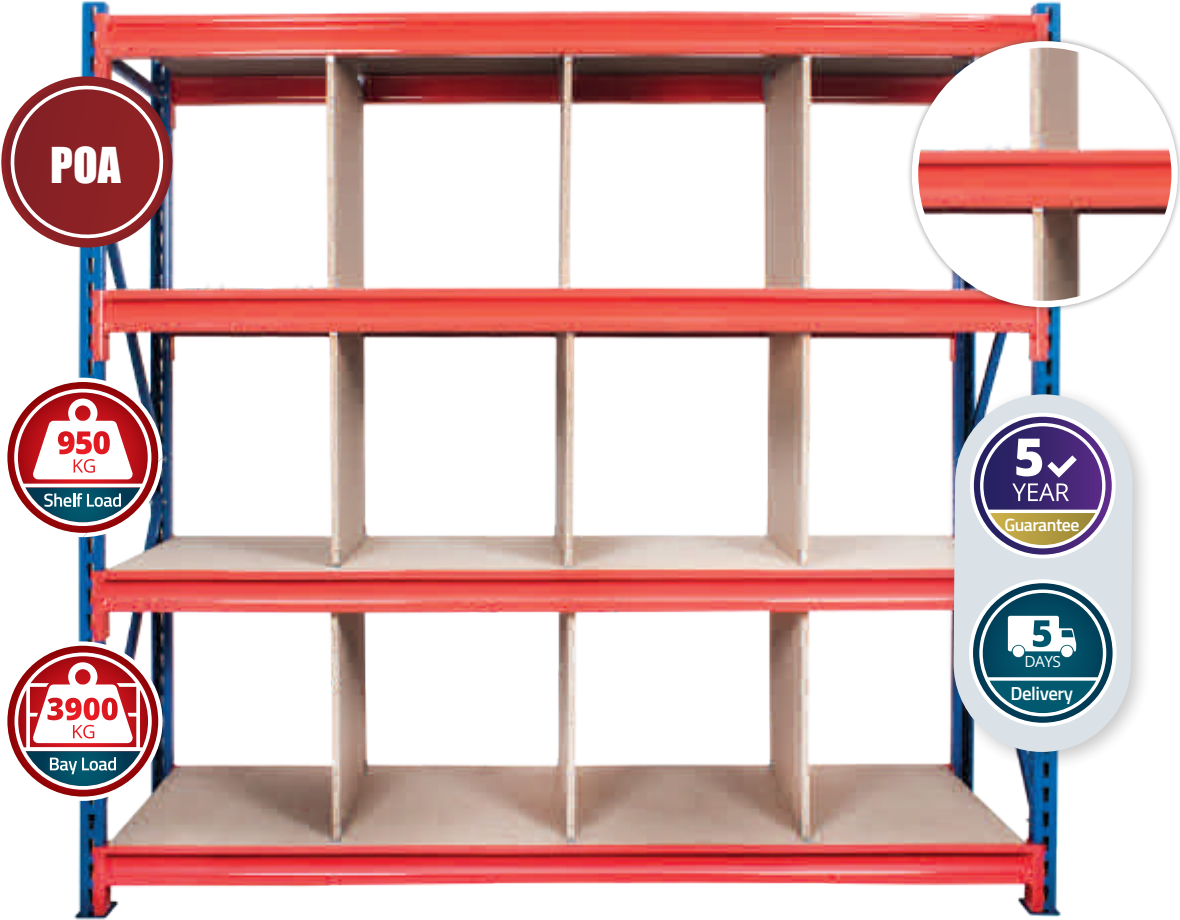
**3900 KG**  
Bay Load

**Shim**  
LN7/SHIM 90x63x1.2mm **£0.78**

**Floor Fixing**  
FFM8/70 M8x65mm **£1.37**

**i Remember, if your shelving's height to depth ratio is greater than 4:1, the bay should be fixed to the floor or to the wall!**  
 Available from - Merlin Industrial Products Ltd - 0800 0418 650 - 2021

# Longspan Divider System Compartment Storage



Longspan Divider System Starter Bays			Extension Bay		Extra Divider	
H x W x D (mm)	Code	Price	Code	Price	Code	Price
1830x1830x457mm	LNBD5/181804/3/BO	POA	LNBD5/181804/3/BO	POA	RRCD/45/57	POA
1830x2135x457mm	LNBD5/182104/3/BO	POA	LNBD5/182104/3/BO	POA	RRCD/45/57	POA
1830x2440x457mm	LNBD5/182404/3/BO	POA	LNBD5/182404/3/BO	POA	RRCD/45/57	POA
1830x1830x610mm	LNBD5/181806/3/BO	POA	LNBD5/181806/3/BO	POA	RRCD/61/57	POA
1830x2135x610mm	LNBD5/182106/3/BO	POA	LNBD5/182106/3/BO	POA	RRCD/61/57	POA
1830x2440x610mm	LNBD5/182406/3/BO	POA	LNBD5/182406/3/BO	POA	RRCD/61/57	POA

① Price includes 2x Frames (1x Frame for extension), 4x Beam Levels, 9 x Chipboard Dividers, Decks plus all required fixings, bracing and brackets. Assembly required. Dividers are of fixed height and can be positioned anywhere.

① Other sizes of Longspan Dividers are available upon request.

Available from - Merlin Industrial Products Ltd - 0800 0418 650 - 2021



TS LONGSPAN DIVIDER SYSTEM

# Shelf Bins & Additional Dividers

**NEW PRODUCT!**

**If you need a strong, robust and versatile bin storage solution, at a competitive price – then look no further.**

Our new range of Shelf Bins have been designed to offer a range of bins in “Big Sizes” for storing large parts or increased volumes. They can fit both small parts shelving systems as well as larger bays, such as Rivet or Longspan.

They have many new features, such as internal dividers that securely locate into 7 different locations. There is also an integral back stop allowing the bin to be suspended out from the shelving, for ease of picking.

With a semi-open fronted and a large labelling area below, ensures items can be identified quickly. The bins are available in Blue shockproof plastic and can be nested when not in use to save space.



from  
**£6.<sup>90</sup>**

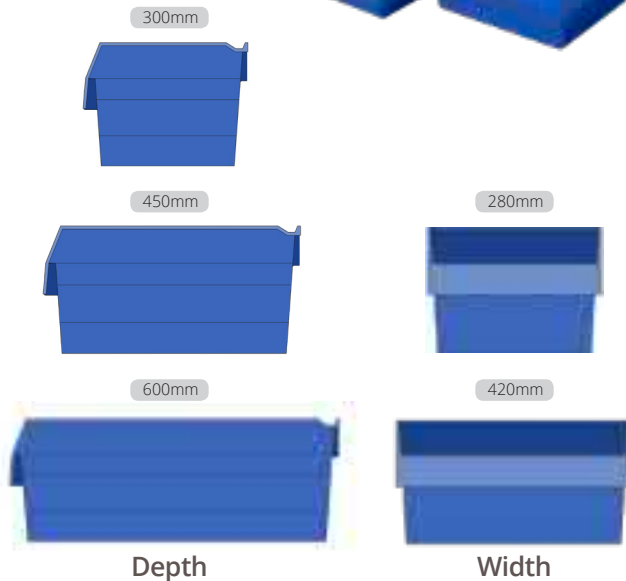
**5**  
YEAR  
Guarantee

**5**  
DAYS  
Delivery



## Plastic Bin Features

- 1 Integral back stop
- 2 Profiled sides for extra strength
- 3 Nestable design – space saving
- 4 Large labelling area
- 5 Semi-open fronted design
- 6 7 divider positions in each bin
- 7 Dividers positively slot into the bin



Shelf Bins			
D x W x H(mm)	Code	Colour	Price
300x280x200mm	SFB302820	Blue	£6.90
450x280x200mm	SFB452820	Blue	£10.00
450x420x200mm	SFB454220	Blue	£14.10
600x280x200mm	SFB602820	Blue	£12.55
600x420x200mm	SFB604220	Blue	£18.80

Add Dividers			
W x H(mm)	Code	Colour	Price
280x200mm	SFD2820	Black	£1.95
420x200mm	SFD4220	Black	£2.70

**Remember, if your shelving's height to depth ratio is greater than 4:1, the bay should be fixed to the floor or to the wall!**

Available from - Merlin Industrial Products Ltd - 0800 0418 650 - 2021

# A heavy duty solution to a garment storage with TS Longspan



Longspan Centre Garment Rack 2135 x 1525 x 610 with 2 rails



Longspan garment rack 2135 x 1525 x 915 with 2 levels

Centre Garment Hanging Rail (For frames and beams please see p.5)			
W (mm)	Code	Load UDL per rail (kg)	Price
1229mm	LS/CGAR12/OR	100	POA
1534mm	LS/CGAR15/OR	90	POA
1839mm	LS/CGAR18/OR	80	POA

❶ Price includes garment rail, brackets and fixings, available in 624mm deep only

Garment Hanging Rail (For frames please see p.76)			
W (mm)	Code	Load UDL per rail (kg)	Price
1229mm	LS/GAR12/OR	100	POA
1534mm	LS/GAR15/OR	90	POA
1839mm	LS/GAR18/OR	80	POA

❶ Price includes 2x garment rails and safety pins.

❶ For stability and safety, each Longspan bay should have a minimum of 2 levels.

Available from - Merlin Industrial Products Ltd - 0800 0418 650 - 2021

