





# Workshop benches

**'Workshop' benches are designed for the most demanding use and environments.** Mechanical workshops, garages and heavy industry are environments where chemicals, heavy loads, and strenuous use necessitate robustness. These workbenches are very

durable and withstand the toughest conditions. There is a wide range of accessories available.

The Workshop bench is guaranteed for regular use with loads up to 750 kg.



- Worktop designed for very heavy loads, load capacity up to 750 kg.
- Very stable on uneven surfaces due to adjustable legs.
- Can be bolted to floor for more stability.
- You can build your personal workstation with our wide range of accessories.



### A drawer unit can serve as a leg

Workshop workbenches can be easily extended by using a drawer frame or a leg as a common support for two workbenches.



### This example includes

Qty	Name	Size mm	Code
2	Fixed leg		836 303-49
2	Steel bench top	1500 x 750	836 721-74
1	Drawer unit 55/66-1	550 x 715 x 800	612 07 201

# Workshop bench examples



Workshop standard workbench

Qty	Name	Size mm	Code
2	Adjustable leg		836 664-49
1	Steel bench top	1500 x 750	836 721-74
1	Spacer bar	1500-2250	836 451-49



Workshop installation workstation

Qty	Name	Size mm	Code
2	Fixed leg		836 303-49
1	Wood top	1500 x 750	836 721-82
1	Drawer unit 55/13-1	550 x 715 x 130	610 07 001
1	Spacer bar	1500-2250	836 451-49



Workshop repair workstation

Qty	Name	Size mm	Code
2	Fixed leg		836 303-49
1	Steel bench top	1500 x 750	836 721-74
3	Upright tube	30 x 60 x 996	860 367-49
2	Perforated panel	736 x 640	861 512-07
1	Drawer unit 55/37-1	550 x 715 x 370	611 07 001
1	Fixing frame		860 375-49



Workshop workstation

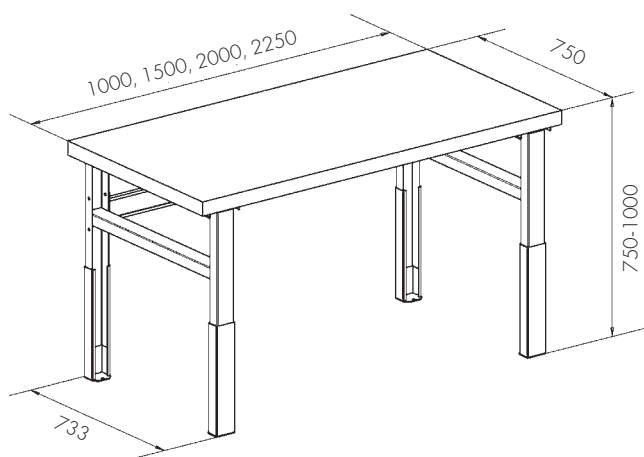
Qty	Name	Size mm	Code
1	Steel bench top	1500 x 750	836 721-74
1	Adjustable leg	700-950	836 664-49
1	Fixing frame	1500	860 375-49
3	Upright tube	1359	860 024-49
1	Light/balancer rail	2 x M750	918 49 006
1	Light ProLite 28	1230	861 928-00
1	Energy rail	440	910 51 001
2	Steel shelf	M750 x 300	836 028-49
2	Suspension rail	M750	859 151-49
5	Stacking bin		1525-5
7	Stacking bin		1015-5
1	Perforated tool cabinet	M750	852 629-07
1	Drawer unit 55/66		612 07 204



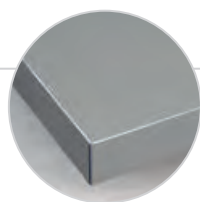
## Design your own workstation

You can design your own workstation using the available components with the 3D configurator at <http://3d.treston.com>

# Designing a Workshop workstation

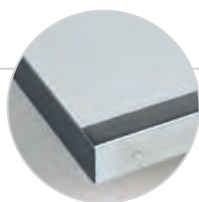


- Select the appropriate bench top: steel, vinyl or wood.
- Select a support for both ends of the bench top: adjustable or fixed leg or a drawer unit. Legs with castors are also available
- Use a spacer bar to stabilise the bench.
- An accessory frame can be used instead of a spacer bar if upright tubes are specified.
- Equip with accessories starting from page 24.



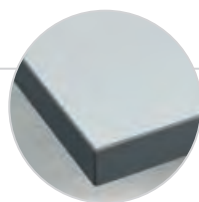
## Workshop steel top

- Steel top 1.5 mm
- Epoxy powder coated dark-grey surface
- Grey plastic ends
- Plywood and chipboard core
- Threaded bushings for fixing legs and drawer units
- 3 mm steel top available on request
- Thickness 50 mm



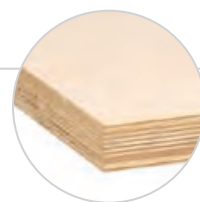
## Workshop top with steel edges

- Vinyl top
- Grey vinyl surface
- Galvanized steel front edge
- Plywood and chipboard core
- Threaded bushings for fixing legs and drawer units
- Thickness 50 mm



## Workshop top with plastic edges

- Vinyl top
- Grey vinyl surface
- Grey plastic edging
- Plywood and chipboard core
- Threaded bushings for fixing legs and drawer units
- Thickness 50 mm



## Workshop wooden top

- Beech multiplex, treated with linseed oil
- Pre-drilled holes for fixing legs and drawer units
- Thickness 40 mm

### Workshop bench tops

Bench top Size W x D mm	Steel top 1,5 mm	Max load kg	Steel top 3 mm	Max load kg	Vinyl top with steel edges	Max load kg	Vinyl top with plastic edges	Max load kg	Wood top	Max load kg
1000 x 750	836 720-74	750	852 652-74	750	836 723-79	750	836 729-79	500	836 720-82	600
1500 x 750	836 721-74	750	852 653-74	750	836 724-79	750	836 726-79	500	836 721-82	600
2000 x 750	836 736-74	500	852 654-74	750	836 728-79	500	836 730-79	500	836 736-82	360
2250 x 750	836 722-74	500	852 649-74	750	836 725-79	500	836 727-79	500	836 722-82	360

### Workshop legs

Name	Height mm*	Code
Adjustable H-leg (1 pc)	700-950	836 664-49
Fixed H-leg (1 pc)	800	836 303-49
Adjustable H-leg for castors (1 pc)	785-1000	836 029-49
Swivel castor with brake** (1 pc)	Ø160	900 041-00
Fixed castor** (1 pc)	Ø160	900 040-00

\* Height without bench top (including 160 mm castors).

\*\* Load capacity: 500 kg for benches 1000 mm and 1500 mm wide, 300 kg for benches 2000 mm and 2250 mm wide.



Legs with castors are also available

## Spacer bar for Workshop bench

Spacer bar is used to stabilise the bench. It is necessary if the bench consists only of legs and bench top.

Width mm	Code
1000-1500	852 694-49
1500-2250	836 451-49



## Accessory frame for Workshop bench

Accessory frame is needed if the bench is equipped with upright tubes. Replaces the spacer bar. See upright tubes and compatibility on page 24.

Width mm	Code
1000	852 693-49
1500	860 375-49
2000	860 725-49
2250	860 376-49



### Accessories from page 24

There is a wide range of accessories available for Workshop bench.

## Lower shelves for the Workshop bench

Not enough space above the workstation? Then utilise the space below. The lower shelf for Workshop bench simply hangs on the horizontal bars.

Name	Size W x D mm	Max load kg	Code
Lower shelf for adjustable leg for bench 1500	1370 x 648	200	924 49 012
Lower shelf for fixed leg for bench 1500	1370 x 648	200	924 49 014
Lower shelf for adjustable leg for bench 2000	1870 x 648	100	924 49 013
Lower shelf for fixed leg for bench 2000	1870 x 648	100	924 49 015
Lower shelf for adjustable leg for bench 2250	2120 x 648	100	924 49 016
Lower shelf for fixed leg for bench 2250	2120 x 648	100	924 49 018

The lower shelves include a backstop.



The Workshop bench can be fitted with a lower shelf for bulky items.



## Structure of the bench top

For us, the bench top is an important part of a bench's structure. For example, the Workshop bench top is designed for very heavy loads. Because of the bench top's structure, the bench is very sturdy, even with the highest loads. The feet and the drawers are attached to the threaded bushings in the bench tops.