

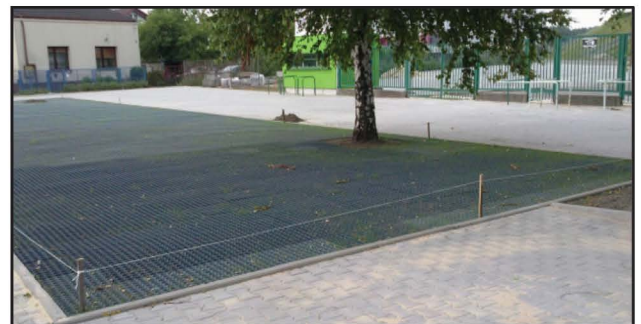
Merlin Industrial Products Ltd have produced yet another new and innovative product, the Grass Grid Porous Paver. This product is ideal in the use of permanent reinforcement of soft ground for parking of vehicles and for stabilising soft earth banks.

The unique 'Geometric' design of the grids allows the dispersion and drainage of excess rain and flood water and can be ideal when integrated into Sustainable Urban Drainage Systems (SUDS) and in areas prone to flooding.

The Grass Grid Porous Paver is manufactured from high quality 100% recycled PP/PE and features a simple latch design enabling each grid to be connected together quickly and efficiently.

As a substitute for paving stones, asphalt and concrete, Grass Grid Porous Pavers provide a cost effective and environmentally friendly solution for both home owners and contractors. Once installed they can be filled and finished with a choice of mixtures, ranging from pea shingle, decorative stone or if required a soil and grass seed mix. Our Grass Grid Porous Pavers come in 3 options ranging from 160 tonnes per sqm to 500 tonnes per sqm filled.

Unlike other products on the market the open design of the grid also allows grass to grow both vertically and horizontally. It is advised that special care be taken in the initial ground preparation before the Grass Grid Porous Pavers are installed, this will ensure a perfect finish at the end of the project.

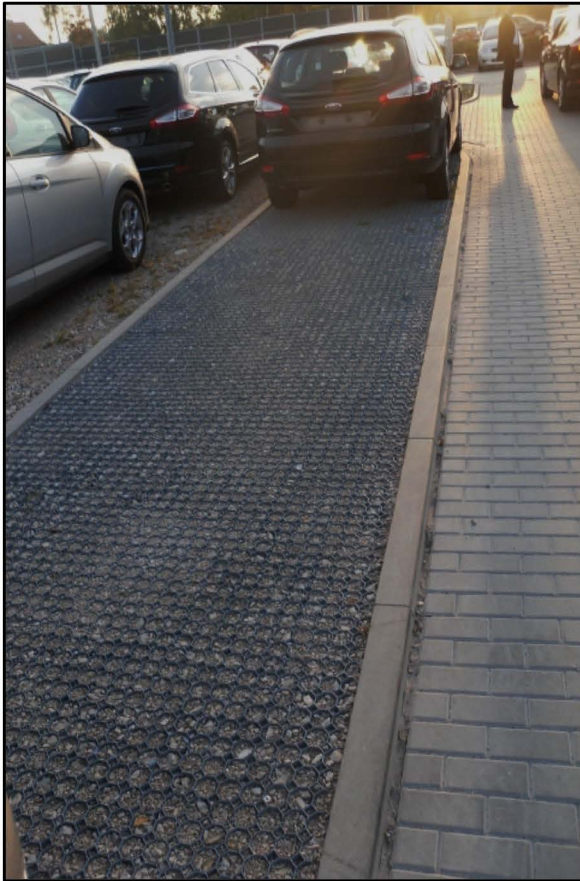


Key Features and Technical Details

- Size: 485mm x 485mm x 40mm (+/-5%) 4.4 tiles= 1m²
- Weight: 1.05kg per tile
- Weight Loading: Type 1 (light duty) 160 tonnes per m²
Type 2 (medium duty) 240 tonnes per m²
Type 3 (heavy duty) 500 tonnes per m²
- Material: Polyethylene 100% recycled and 100% recyclable
- withstands frost and UV radiation
Natural stability: temperature -30C to 180C
- Connection: 8 connection latches
- Stability: 4 anchoring pins per tile
- Grass Growth: Horizontal/Vertical
- Colour: Green
- Decorative Stone: Per 15 sqm of grids - 1 tonne of decorative stone is needed.

Applications of Elite Grass Grid

- Overflow car parks
- Pedestrian access ways
- Pathways and Driveways
- Emergency access roads
- Event parking
- Golf courses
- Ground reinforcement and stabilisation including slopes, embankments and storage.



As well as our Grass Grid Porous Pavers providing an excellent ground reinforcement and drainage solution, we've been aware for some time that customers require this type of product in a multitude of applications

For this reason we've developed 3 different grids that have a range of different weight loadings starting from 160 tonnes per sqm all the way to 500 tonnes per sqm when filled. In conjunction with our range of grids we've also recently launched the new unique and innovative Grass Grid Edging System.

The unique Grass Grid Edging System provides a complete solution and finish to any contractors or homeowners project, helping to retain gravel infill and provide a clean aesthetic finish.

The Grass Grid Edging system can be used on driveways and park roads, around flower beds, trees and bushes, and can also be used when laying turf.

