

# Boardroom

Boardroom tables provide modern executives with the distinctive impression of quality, precision & strength that makes a bold, visual statement in any boardroom. Table tops are designed to incorporate power and data capabilities, embracing the latest technology so you can break away from the predictable, old fashioned conference rooms and create new dimensions in boardroom design.



## Accreditations



Manufactured in  
the UK



BS EN15372:2016  
(selected products)

## Options



Available  
from stock



4 week  
lead time



Electrical  
accessories

## Styles

RECTANGULAR

SQUARE

CIRCULAR

RADIAL

BOAT

Collection of tables shapes designed for each range



Elev8² Touch  
page 180



Adapt  
page 182



Fuze  
page 184



Arrow Head  
page 186



Trumpet base  
page 188



Eternal  
page 190

## Wood Finishes

(Selected products)



Beech  
(B)



Grey Oak  
(GO)



Oak  
(O)



White  
(WH)

## Made-to-order

(Selected products)



Grey Oak  
(GO)



Walnut  
(W)



# Elev8<sup>2</sup> Touch

The Elev8<sup>2</sup> Touch height adjustable tables combine unique design with versatility to transform corporate spaces like boardrooms into flexible meeting places. The majority of boardroom meeting are sedentary environments, so you can vary your position from sitting to standing allowing for a variety of postures to be more physically active throughout the meeting.



## Stocked Top Finishes



Beech (B)



Oak (O)



White (WH)

## Made-to-order Top Finishes



Grey Oak (GO)



Walnut (W)

## Why opt for a sit-stand solution?



Twin Motors



Touch button



3 part leg



650-1250



39db

Rectangular Boardroom Table



CODE	W	D	H	STOCKED	MTO
EVTBT18	1800	1000	650-1250	£1540	£1587

- Rectangular table 1800mm long with adjustability from 650mm-1250mm
- Powerful twin motors raise and lower the table top at a 39db noise level

Rectangular Boardroom Table



CODE	W	D	H	STOCKED	MTO
EVTBT20	2000	1000	650-1250	£1664	£1715

- Rectangular table 2000mm long with adjustability from 650mm-1250mm
- Powerful twin motors raise and lower the table top at a 39db noise level

Boat Shape Boardroom Table



CODE	W	D	H	STOCKED	MTO
EVTBT24R	2400	800-1300	650-1250	£1724	£1777

- Radial boardroom table with 25mm tops available in a choice of five wood finishes
- Powerful twin motors raise and lower the table top at a 39db noise level



Black (K)



Silver (S)



White (WH)



Beech (B)



Oak (O)



White (WH)



Grey Oak (GO)



Walnut (W)

Please add frame finish followed by table top colour when ordering eg. EVTBT18 with Silver frame in White = EVTBT18-S-WH

Available from - Merlin Industrial Products Ltd - 0800 0418 650 - info@merlin-industrial.co.uk

Add-on Unit



CODE	W	D	H	STOCKED	MTO
EVTBT18-AB	1800	1000	650-1250	£1368	£1411

- Extend into a modular boardroom table system with single add-on unit and brackets
- The three base columns of the straight and add-on table stay perfectly synced

Add-on Unit



CODE	W	D	H	STOCKED	MTO
EVTBT20-AB	2000	1000	650-1250	£1490	£1536

- Extend into a modular boardroom table system with single add-on unit and brackets
- The three base columns of the straight and add-on table stay perfectly synced

Radial End Boardroom Table



CODE	W	D	H	STOCKED	MTO
EVTBT24	2400	1000	650-1250	£1724	£1777

- Radial end boardroom table with 25mm tops and impact resistant ABS edging
- Powerful twin motors with a max weight loading of 160kg

STOCKED

MADE-TO-ORDER

# Adapt

Beautifully designed and aesthetically pleasing, the Adapt boardroom table comprises a sturdy steel subframe and table tops which take on a floating appearance. Table legs can be shared, making it an aesthetically pleasing, cost effective and practical conference collection with robust customisable options for meeting room and boardroom needs.



## Stocked Top Finishes

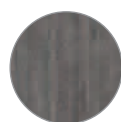


Beech (B)



White (WH)

## Made-to-order Top Finishes



Grey Oak (GO)



Oak (O)



Walnut (W)

## Power Ready



**ECLIPSE - ENDD1**  
RRP £538



**AERO - APD2PINF/1S/1D/1T-K**  
RRP £310



**THOLUS - THL-2**  
RRP £1587

Boardroom table tops with the suffix '-CO' are supplied with rectangular cutouts 272mm x 132mm routed into the tops in a central position on the Adapt range of boardroom tables, suitable for the above power modules. See pages 173-175 for more information.

Available from - Merlin Industrial Products Ltd - 0800 0418 650 - [info@merlin-industrial.co.uk](mailto:info@merlin-industrial.co.uk)



## Square Boardroom Tables



-CO with 272mm x 132mm cutout

CODE	W	D	H	STOCKED	MTO
EBT1212	1200	1200	725	£753	£792
EBT1616	1600	1600	725	£925	£950
EBT1616-CO	1600	1600	725	£925	£950



- Single square boardroom table with 25mm tops & impact resistant ABS edging
- Sturdy steel framework and bench tops which take on a floating appearance

## Add-on Units



-CO with 272mm x 132mm cutout

CODE	W	D	H	STOCKED	MTO
EBT1212-AB	1200	1200	725	£496	£508
EBT1616-AB	1600	1600	725	£648	£665
EBT1616-AB-CO	1600	1600	725	£648	£665



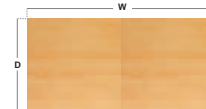
- Single straight add-on table with 25mm tops & impact resistant ABS edging
- Recessed leg is positioned in the centre of the tables and can be extended

## Rectangular Boardroom Tables



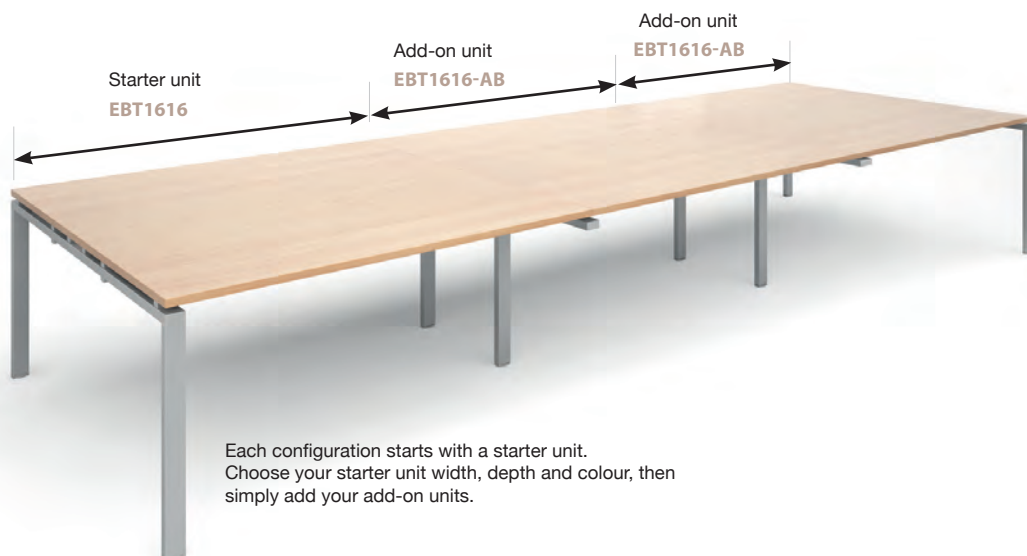
-CO with 272mm x 132mm cutout

CODE	W	D	H	STOCKED	MTO
EBT2412	2400	1200	725	£1170	£1282
EBT3216	3200	1600	725	£1479	£1613
EBT3216-CO	3200	1600	725	£1479	£1613



- Rectangular boardroom table with 25mm tops & impact resistant ABS edging
- Extended sturdy steel framework and bench tops which take on a floating appearance

## How-to-guide



Each configuration starts with a starter unit.  
Choose your starter unit width, depth and colour, then simply add your add-on units.

## Starter plus Add-on units



## Starter leg moves to the end



## Fully assembled units



Black (K)



Silver (S)



White (WH)



Beech (B)



White (WH)



Grey Oak (GO)



Oak (O)



Walnut (W)

## STOCKED

## MADE-TO-ORDER

Please add frame finish followed by table top colour when ordering eg. EBT1616 with Silver frame in Beech = EBT1616-S-B

Available from - Merlin Industrial Products Ltd - 0800 0418 650 - [info@merlin-industrial.co.uk](mailto:info@merlin-industrial.co.uk)

# Fuze

Fuze exemplifies elegance, providing a sophisticated boardroom table design which is the perfect answer for a less corporate modern office. The simple, flexible design naturally assimilates to the task or application at hand and the solid oak legs are built to last. Fuze's clean, functional lines and co-ordinated table top finish options offer everything you need to be inspired and productive.



## Stocked Top Finishes



White (WH)

## Made-to-order Top Finishes



Grey Oak (GO)



Oak (O)



White/Oak Edge (WO)

## Power Ready



**ECLIPSE - ENDD1**  
RRP £538



**AERO - APD2PINF/1S/1D/1T-K**  
RRP £310



**THOLUS - THL-2**  
RRP £1587

Boardroom table tops with the suffix '-CO' are supplied with rectangular cutouts 272mm x 132mm routed into the tops in a central position on the Fuze range of boardroom tables, suitable for the above power modules. See pages 173-175 for more information.

Available from - Merlin Industrial Products Ltd - 0800 0418 650 - [info@merlin-industrial.co.uk](mailto:info@merlin-industrial.co.uk)

## Square Boardroom Tables



-CO with 272mm x 132mm cutout

CODE	W	D	H	STOCKED	MTO
FZBT1616	1600	1600	725	£1028	£1060
FZBT1616-CO	1600	1600	725	£1028	£1060

- Single square boardroom table with 25mm tops and steel framework
- Solid oak leg frame provides a modern, stylish twist on boardroom tables

## Add-on Units



-CO with 272mm x 132mm cutout

CODE	W	D	H	STOCKED	MTO
FZBT1616-AB	1600	1600	725	£643	£664
FZBT1616-AB-CO	1600	1600	725	£643	£664

- Single straight add-on unit square table with 25mm tops & solid oak leg frame
- Recessed leg is positioned in the centre of the tables and can be extended

## Rectangular Boardroom Tables

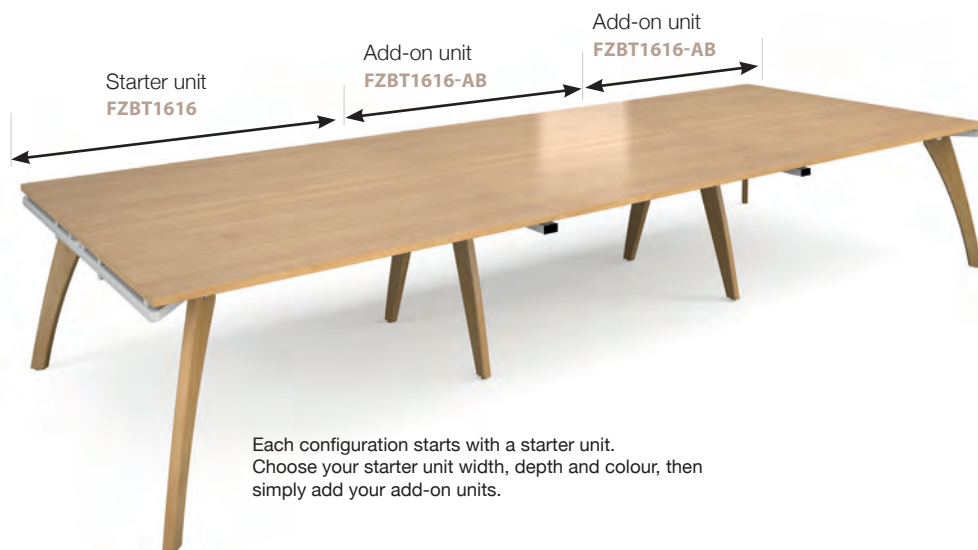


-CO with 272mm x 132mm cutout

CODE	W	D	H	STOCKED	MTO
FZBT3216	3200	1600	725	£1669	£1721
FZBT3216-CO	3200	1600	725	£1669	£1721

- Rectangular boardroom table with 25mm tops and steel framework
- Solid oak leg frame provides a modern, stylish twist on boardroom tables

## How-to-guide



Each configuration starts with a starter unit.  
Choose your starter unit width, depth and colour, then simply add your add-on units.

## Starter plus Add-on units



## Starter leg moves to the end



## Fully assembled units



## STOCKED



White (WH)



Grey Oak (GO)

## MADE-TO-ORDER



Oak (O)



White/Oak (WO)



# Arrow Head

Simply designed to ensure core functionality, Arrow Head offers versatile tables in a variety of shapes and finishes to suit any boardroom or meeting setting. The Arrow Head leg design offers rigidity and strength with its clean cut lines and balanced proportions. Single tables can be used individually for meetings, or several tables can be grouped together to achieve various room layouts.



## Stocked Top Finishes



Beech (B)



White (WH)

## Made-to-order Top Finishes



Grey Oak (GO)



Oak (O)



Walnut (W)

## Power Ready



**ECLIPSE - ENDD1**  
RRP £538



**AERO - APD2PINF/1S/1D/1T-K**  
RRP £310



**THOLUS - THL-2**  
RRP £1587

Boardroom table tops with the suffix '-CO' are supplied with rectangular cutouts 272mm x 132mm routed into the tops in a central position on the Arrow Head range of boardroom tables, suitable for the above power modules. See pages 173-175 for more information.

Available from - Merlin Industrial Products Ltd - 0800 0418 650 - [info@merlin-industrial.co.uk](mailto:info@merlin-industrial.co.uk)

## Rectangular Boardroom Tables



-CO with 272mm x 132mm cutout

CODE	W	D	H	STOCKED	MTO
EB18	1800	1000	725	£539	£556
EB20	2000	1000	725	£576	£595
EB18-CO	1800	1000	725	£539	£556
EB20-CO	2000	1000	725	£576	£595



- Rectangular boardroom table with 25mm tops & impact resistant ABS edging
- Additional modular extensions enable a variety of configurations

## Boat Shape Boardroom Table



CODE	W	D	H	STOCKED	MTO
ERB24	2400	800-1300	725	£770	£792



- Radial boardroom table with 25mm tops & impact resistant ABS edging
- Boat shaped table top available in a choice of five wood finishes

## Radial End Boardroom Table



-CO with 272mm x 132mm cutout

CODE	W	D	H	STOCKED	MTO
EB24	2400	1000	725	£740	£762
EB24-CO	2400	1000	725	£740	£762



- Radial end boardroom table with 25mm tops & impact resistant ABS edging
- Curved table top with arrow head panel legs and adjustable foot levellers

## Radial Extension Table



CODE	W	D	H	STOCKED	MTO
EB10D	1000	1000	725	£309	£318

- Circular boardroom extension table with 25mm tops & ABS edging
- To be used together with the rectangular boardroom table and square extensions

## STOCKED



Beech (B)



White (WH)



Grey Oak (GO)



Oak (O)



Walnut (W)

## MADE-TO-ORDER

CODE	W	D	H	STOCKED	MTO
EB10	1000	1000	725	£277	£318

- Square boardroom extension table with 25mm tops & ABS edging
- To be used together with the rectangular boardroom table and radial extensions

## Square Extension Table





# Trumpet Base

Our trumpet base tables are a modern solution for any boardroom featuring a robust, weighted circular base available in silver, white or chrome that offers the ultimate in strength and durability. Curved and straight table tops are available in a choice of five colour finishes to present your company in the best possible way, whether the need calls for impromptu meetings or creative collaboration.



## Stocked Top Finishes



Beech (B)



White (WH)

## Made-to-order Top Finishes



Grey Oak (GO)



Oak (O)



Walnut (W)

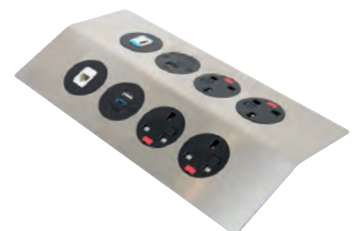
## Power Ready



**ECLIPSE - ENDD1**  
RRP £538



**AERO - APD2PINF/1S/1D/1T-K**  
RRP £310



**THOLUS - THL-2**  
RRP £1587

Boardroom table tops with the suffix '-CO' are supplied with rectangular cutouts 272mm x 132mm cutouts routed into the tops in a central position on the Trumpet Base range of boardroom tables, suitable for the above power modules. See pages 173-175 for more information.

Available from - **Merlin Industrial Products Ltd - 0800 0418 650 - [info@merlin-industrial.co.uk](mailto:info@merlin-industrial.co.uk)**



Rectangular Boardroom Tables



-CO with 272mm x 132mm cutout

CODE	W	D	H	STOCKED	MTO
TB18	1800	1000	725	£734	£754
TB20	2000	1000	725	£770	£792
TB18-CO	1800	1000	725	£734	£754
TB20-CO	2000	1000	725	£770	£792



- Rectangular tables 1000mm with 25mm tops & impact resistant ABS edging
- Additional modular extensions enable a variety of configurations

Radial End Boardroom Table



-CO with 272mm x 132mm cutout

CODE	W	D	H	STOCKED	MTO
TB24	2400	1000	725	£998	£1030
TB24-CO	2400	1000	725	£998	£1030



- Radial end table 1000mm with 25mm tops & impact resistant ABS edging
- Curved table top with steel trumpet base weighted for stability

Circular Boardroom Table



CODE	W	D	H	STOCKED	MTO
TB10C	1000	1000	725	£492	£509



- Circular tables with 25mm tops & impact resistant ABS edging
- Free standing table 1000mm with 680mm diameter, weighted trumpet base

Circular Boardroom Table



CODE	W	D	H	STOCKED	MTO
TB12C	1200	1200	725	£542	£556



- Circular tables with 25mm tops & impact resistant ABS edging
- Free standing table 1200mm with 680mm diameter, weighted trumpet base

Radial Extension Table



CODE	W	D	H	STOCKED	MTO
TB10D	1000	1000	725	£414	£426



- Radial end extension table with 25mm tops & impact resistant ABS edging
- To be used together with the rectangular boardroom table and square extensions

Square Extension Table



CODE	W	D	H	STOCKED	MTO
TB10	1000	1000	725	£381	£392



- Square extension table 1000mm with 25mm tops & impact resistant ABS edging
- Can be used as a stand alone table or as a table extension

STOCKED

MADE-TO-ORDER



Chrome (C)



Silver (S)



White (WH)



Beech (B)



White (WH)



Grey Oak (GO)



Oak (O)



Walnut (W)

Please add frame finish followed by table top colour when ordering eg. TB10 with Silver frame in Oak = TB10-S-O

Available from - Merlin Industrial Products Ltd - 0800 0418 650 - info@merlin-industrial.co.uk

# Eternal

Eternal is a sophisticated boardroom table collection with robust customisable options for all your meeting room needs. Many sizes, shapes, and details let you tailor the look for formal or casual settings, with stylish flat circular bases and cylindrical columns, tops available in five finishes, and integrated power options which makes Eternal a practical choice for supporting technology.



## Stocked Top Finishes



Beech (B)



White (WH)

## Made-to-order Top Finishes



Grey Oak (GO)



Oak (O)



Walnut (W)

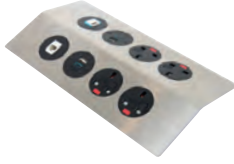
## Power Ready



**ECLIPSE - ENDD1**  
RRP £538



**AERO - APD2PINF/1S/1D/1T-K**  
RRP £310



**THOLUS - THL-2**  
RRP £1587



**PIXEL - PX-1**  
RRP £311



**PLUTO - PL-2**  
RRP £445



**INCA - 79-1**  
RRP £500

Boardroom table tops with the suffix '-CO' are supplied with either a rectangular 272mm x 132mm cutout or 80mm diameter cutout routed into the tops in a central position on the Eternal range of boardroom tables, suitable for the above power modules. See pages 173-175 for more information.

Available from - Merlin Industrial Products Ltd - 0800 0418 650 - [info@merlin-industrial.co.uk](mailto:info@merlin-industrial.co.uk)

## Rectangular Boardroom Tables



-CO with 272mm x 132mm cutout

CODE	W	D	H	STOCKED	MTO
ETN18	1800	1000	725	£729	£754
ETN20	2000	1000	725	£770	£792
ETN18-CO	1800	1000	725	£729	£754
ETN20-CO	2000	1000	725	£770	£792



- Rectangular tables 1000mm with 25mm tops & impact resistant ABS edging
- Additional modular extensions enable a variety of configurations

## Radial End Boardroom Tables



-CO with 272mm x 132mm cutout

CODE	W	D	H	STOCKED	MTO
ETN24	2400	1000	725	£998	£1030
ETN24-CO	2400	1000	725	£998	£1030



- Radial end table 1000mm with 25mm tops & impact resistant ABS edging
- Curved table top with steel trumpet base weighted for stability

## Circular Boardroom Tables



-CO with 80mm diameter cutout

CODE	W	D	H	STOCKED	MTO
ETN10C	1000	1000	725	£492	£509
ETN10C-CO	1000	1000	725	£593	£609



- Circular tables with 25mm tops & impact resistant ABS edging
- Free standing table 1000mm with flat circular 600mm diameter base

## Circular Boardroom Tables



-CO with 80mm diameter cutout

CODE	W	D	H	STOCKED	MTO
ETN12C	1200	1200	725	£542	£556
ETN12C-CO	1200	1200	725	£642	£662



- Circular tables with 25mm tops & impact resistant ABS edging
- Free standing table 1200mm with flat circular 600mm diameter base

## Radial Extension Table



CODE	W	D	H	STOCKED	MTO
ETN10D	1000	1000	725	£411	£426

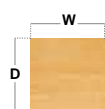
- Radial end extension table with 25mm tops & impact resistant ABS edging
- To be used together with the rectangular boardroom table and square extensions

## Square Extension Tables



-CO with 80mm diameter cutout

CODE	W	D	H	STOCKED	MTO
ETN10	1000	1000	725	£381	£404
ETN10-CO	1000	1000	725	£482	£499



- Square extension table 1000mm with 25mm tops & ABS edging
- Can be used as a stand alone table or as a table extension

## STOCKED

## MADE-TO-ORDER



Black (K)



Brushed Steel (BS)



Beech (B)



White (WH)



Grey Oak (GO)



Oak (O)



Walnut (W)

Please add frame finish followed by table top colour when ordering eg. ETN18 with Black frame in Grey Oak = ETN18-K-GO

Available from - Merlin Industrial Products Ltd - 0800 0418 650 - info@merlin-industrial.co.uk