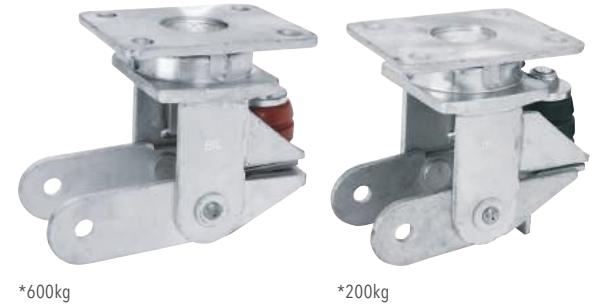
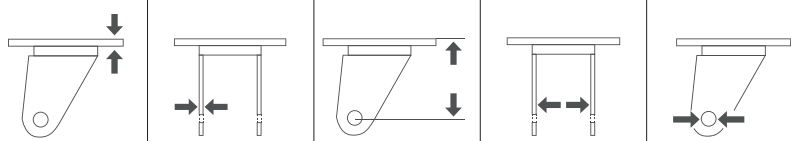


# BZKL - SPR SERIES

Fabricated Zinc Plated Steel  
Single Ball Race Swivel Head



## Plate Fitting



Dia (mm)	Swivel Code	Swivel Brake Code	Fixed Code	Plate Fitting	Steel Gauge Plate (mm)	Steel Gauge Fork (mm)	Height To Axle Hole (mm)	Fork Width (mm)	Axle Bolt (mm)	Load Capacity (kg)
150	BZKL150ASSPR200	-	BZKFL150ASSPR200	A	7.5	6	*128	65	12	200
150	BZKL150ASSPR	-	BZKFL150ASSPR	A	7.5	6	*128	65	12	600
200	BZKL200ASSPR200	-	BZKFL200ASSPR200	A	7.5	6	*157	65	12	200
200	BZKL200ASSPR	-	BZKFL200ASSPR	A	7.5	6	*157	65	12	600

\*Height reduced by 20mm when compressed



Directional Lock Available Add DL To Code  
- Not Suitable For BZKL-SPR Series

- Heavy duty castors with built-in suspension
- Unique elastomeric spring system reduces bounce under light loading
- Substantial noise reduction
- Reduction of wear and tear to floor surfaces
- Increase in wheel and equipment longevity
- Shock absorption protects the load
- Improved handling of equipment especially when cornering
- Ideal for use in aerospace, glass and motor industries



# BZKL SERIES

Fabricated Zinc Plated Steel  
Single Ball Race Swivel Head



**PLATE FIXING 180-900kg 100-200mm**

## Top Plate Fixing

Dia	Plate (mm)	Centres (mm)	Fixing Bolt (mm)	Type	Bearing	Nylon			65 Shore A Black High Quality Elastic Rubber On Aluminium			55 Shore A Black High Quality Elastic Rubber On Aluminium			75 Shore A Black Elastic Rubber On Cast Iron						
						Code	Load (kg)	Tread (mm)	Radius (mm)	Code	Load (kg)	Tread (mm)	Radius (mm)	Code	Load (kg)	Tread (mm)	Radius (mm)	Code	Load (kg)	Tread (mm)	Radius (mm)
100	140	138 x 110	105 x 80/75	10	☺	BZKL100NY	400	35	77	-	-	77	-	-	77	-	-	77			
						BZKL100NYBJ	650	40	-	BZKL100ERBJ	250	50	-	BZKL100SRERBJ	180	50	-	BZKL100CRBJ	210	50	-
						BZKL100NYSWB	400	35	100	BZKL100ERBJSWB	250	50	100	BZKL100SRERBJSWB	180	50	100	BZKL100CRBJSWB	210	50	100
					☹	BZKFL100NY	400	35	-	-	-	-	-	-	-	-	-	-	-	-	-
						BZKFL100NYBJ	650	40	-	BZKFL100ERBJ	250	50	-	BZKFL100SRERBJ	180	50	-	BZKFL100CRBJ	210	50	-
						BZKFL100NYSWB	400	35	-	-	-	-	-	-	-	-	-	-	-	-	-
125	165	138 x 110	105 x 80/75	10	☺	BZKL125NY	750	45	95	-	-	95	-	-	95	-	-	95			
						BZKL125NYBJ	750	45	-	BZKL125ERBJ	270	50	-	BZKL125SRERBJ	225	50	-	BZKL125CRBJ	300	50	-
						BZKL125NYSWB	750	45	100	BZKL125ERBJSWB	270	50	100	BZKL125SRERBJSWB	225	50	100	BZKL125CRBJSWB	300	50	100
					☹	BZKFL125NY	750	45	-	-	-	-	-	-	-	-	-	-	-	-	
						BZKFL125NYBJ	750	45	-	BZKFL125ERBJ	270	50	-	BZKFL125SRERBJ	225	50	-	BZKFL125CRBJ	300	50	-
						BZKFL125NYSWB	750	45	-	-	-	-	-	-	-	-	-	-	-	-	
150	195	138 x 110	105 x 80/75	10	☺	BZKL150NY	800	-	115	-	-	115	-	-	115	-	-	115			
						BZKL150NYBJ	900	45	-	BZKL150ERBJ	350	50	-	BZKL150SRERBJ	250	50	-	BZKL150CRBJ	350	50	-
						BZKL150NYSWB	800	-	150	BZKL150ERBJSWB	350	50	150	BZKL150SRERBJSWB	250	50	150	BZKL150CRBJSWB	350	50	150
					☹	BZKFL150NY	800	-	-	-	-	-	-	-	-	-	-	-	-	-	
						BZKFL150NYBJ	800	45	-	BZKFL150ERBJ	350	50	-	BZKFL150SRERBJ	250	50	-	BZKFL150CRBJ	350	50	-
						BZKFL150NYSWB	800	45	-	-	-	-	-	-	-	-	-	-	-	-	
200	245	138 x 110	105 x 80/75	10	☺	BZKL200NY	900	50	152	-	-	152	-	-	152	-	-	152			
						BZKL200NYBJ	900	50	-	BZKL200ERBJ	500	50	-	BZKL200SRERBJ	380	50	-	BZKL200CRBJ	450	50	-
						BZKL200NYSWB	900	50	155	BZKL200ERBJSWB	500	50	155	BZKL200SRERBJSWB	380	50	155	BZKL200CRBJSWB	450	50	155
					☹	BZKFL200NY	900	50	-	-	-	-	-	-	-	-	-	-	-	-	
						BZKFL200NYBJ	900	50	-	BZKFL200ERBJ	500	50	-	BZKFL200SRERBJ	380	50	-	BZKFL200CRBJ	450	50	-
						BZKFL200NYSWB	900	50	-	-	-	-	-	-	-	-	-	-	-	-	



Footguards Available  
Add FG To Code



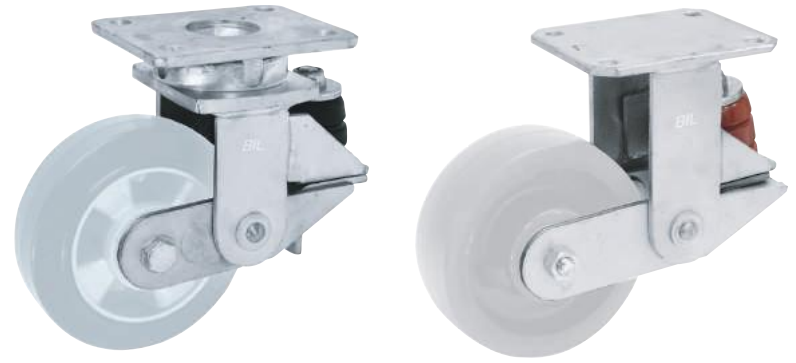
Directional Locks Available  
Add DL To Code

P 300				P 280				P 284				P 284				P 286			
Cast Iron				96 Shore A Brown Polyurethane On Nylon				95 Shore A Brown Ergonomic Polyurethane On Aluminium				85 Shore A Green Ergonomic Polyurethane On Aluminium				94 Shore A Brown Polyurethane On Cast Iron			
-30°C to +80°C				-20°C to +80°C				-20°C to +80°C				-20°C to +80°C				-20°C to +80°C			
Code	Load (kg)	Tread (mm)	Radius (mm)	Code	Load (kg)	Tread (mm)	Radius (mm)	Code	Load (kg)	Tread (mm)	Radius (mm)	Code	Load (kg)	Tread (mm)	Radius (mm)	Code	Load (kg)	Tread (mm)	Radius (mm)
BZKL100CI	400	50	-	-	-	-	-	-	-	-	-	-	-	-	-	-	-	-	-
BZKL100CIBJ	400	50	77	-	-	-	-	BZKL100RPTABJ	350	50	77	BZKL100SRPTABJ	350	50	77	BZKL100PTBJ	300	40	77
BZKL100CISWB	400	50	-	-	-	-	-	-	-	-	-	-	-	-	-	-	-	-	-
BZKL100CIBJSWB	400	50	100	-	-	-	-	BZKL100RPTABJSWB	350	50	100	BZKL100SRPTABJSWB	350	50	100	BZKL100PTBJSWB	300	40	100
BZKFL100CI	400	50	-	-	-	-	-	-	-	-	-	-	-	-	-	-	-	-	-
BZKFL100CIBJ	400	50	-	-	-	-	-	BZKFL100RPTABJ	350	50	-	BZKFL100SRPTABJ	350	50	-	BZKFL100PTBJ	300	40	-
BZKL125CI	550	50	-	-	-	-	-	-	-	-	-	-	-	-	-	-	-	-	-
-	-	-	95	BZKL125XPNB	400	45	95	-	-	-	95	-	-	-	95	-	-	-	95
BZKL125CIBJ	550	50	-	BZKL125XPNB	400	45	-	BZKL125RPTABJ	450	50	-	BZKL125SRPTABJ	450	50	-	BZKL125PTBJ	400	40	-
BZKL125CISWB	550	50	-	-	-	-	-	-	-	-	-	-	-	-	-	-	-	-	-
-	-	-	100	BZKL125XPNBJSWB	400	45	100	-	-	-	100	-	-	-	100	-	-	-	100
BZKL125CIBJSWB	550	50	-	BZKL125XPNBJSWB	400	45	-	BZKL125RPTABJSWB	450	50	-	BZKL125SRPTABJSWB	450	50	-	BZKL125PTBJSWB	400	40	-
BZKFL125CI	550	50	-	-	-	-	-	-	-	-	-	-	-	-	-	-	-	-	-
-	-	-	-	BZKFL125XPNB	400	45	-	-	-	-	-	-	-	-	-	-	-	-	-
BZKFL125CIBJ	550	50	-	BZKFL125XPNB	400	45	-	BZKFL125RPTABJ	450	50	-	BZKFL125SRPTABJ	450	50	-	BZKFL125PTBJ	400	40	-
BZKL150CI	900	50	-	-	-	-	-	-	-	-	-	-	-	-	-	-	-	-	-
-	-	-	115	BZKL150XPNB	600	50	115	-	-	-	115	-	-	-	115	-	-	-	115
BZKL150CIBJ	900	50	-	BZKL150XPNB	600	50	-	BZKL150RPTABJ	575	50	-	BZKL150SRPTABJ	575	50	-	BZKL150PTBJ	750	50	-
BZKL150CISWB	900	50	-	-	-	-	-	-	-	-	-	-	-	-	-	-	-	-	-
-	-	-	150	BZKL150XPNBJSWB	600	50	150	-	-	-	150	-	-	-	150	-	-	-	150
BZKL150CIBJSWB	900	50	-	BZKL150XPNBJSWB	600	50	-	BZKL150RPTABJSWB	575	50	-	BZKL150SRPTABJSWB	575	50	-	BZKL150PTBJSWB	750	50	-
BZKFL150CI	900	50	-	-	-	-	-	-	-	-	-	-	-	-	-	-	-	-	-
-	-	-	-	BZKFL150XPNB	600	50	-	-	-	-	-	-	-	-	-	-	-	-	-
BZKFL150CIBJ	900	50	-	BZKFL150XPNB	600	50	-	BZKFL150RPTABJ	575	50	-	BZKFL150SRPTABJ	575	50	-	BZKFL150PTBJ	750	50	-
BZKL200CI	900	50	-	-	-	-	-	-	-	-	-	-	-	-	-	-	-	-	-
-	-	-	152	BZKL200XPNB	700	57	152	-	-	-	152	-	-	-	152	-	-	-	152
BZKL200CIBJ	900	50	-	BZKL200XPNB	700	57	-	BZKL200RPTABJ	775	50	-	BZKL200SRPTABJ	775	50	-	BZKL200PTBJ	900	50	-
BZKL200CISWB	900	50	-	-	-	-	-	-	-	-	-	-	-	-	-	-	-	-	-
-	-	-	155	BZKL200XPNBJSWB	700	57	155	-	-	-	155	-	-	-	155	-	-	-	155
BZKL200CIBJSWB	900	50	-	BZKL200XPNBJSWB	700	57	-	BZKL200RPTABJSWB	775	50	-	BZKL200SRPTABJSWB	775	50	-	BZKL200PTBJSWB	900	50	-
BZKFL200CI	900	50	-	-	-	-	-	-	-	-	-	-	-	-	-	-	-	-	-
-	-	-	-	BZKFL200XPNB	700	57	-	-	-	-	-	-	-	-	-	-	-	-	-
BZKFL200CIBJ	900	50	-	BZKFL200XPNB	700	57	-	BZKFL200RPTABJ	775	50	-	BZKFL200SRPTABJ	775	50	-	BZKFL200PTBJ	900	50	-



# BZKL-SPR SERIES

Fabricated Zinc Plated Steel  
Single Ball Race Swivel Head



**PLATE FIXING    200-600kg    150-200mm**

## Top Plate Fixing

Dia (mm)	Height Without Load (mm)	Height With Full Load (mm)	Plate (mm)	Centres (mm)	Fixing Bolt (mm)	Type	Bearing	Spring Rating	65 Shore A Black High Quality Elastic Rubber On Aluminium -30°C to +80°C			55 Shore A Black High Quality Elastic Rubber On Aluminium -30°C to +80°C			75 Shore A Blue Polyurethane On Aluminium -20°C to +80°C			94 Shore A Brown Polyurethane On Cast Iron -20°C to +80°C									
									Code	Load (kg)	Tread (mm)	Radius (mm)	Code	Load (kg)	Tread (mm)	Radius (mm)	Code	Load (kg)	Tread (mm)	Radius (mm)	Code	Load (kg)	Tread (mm)	Radius (mm)			
150	203	183	138 x 110	105 x 80/75	10	☺	☺	200kg	BZKL150ERBJSPR200	200	50	165	BZKL150SRERBJSPR200	200	50	BZKL150SPABJSPR200	200	50	BZKL150PTBJSPR200	200	50						
								600kg	BZKL150ERBJSPR	350	50		BZKL150SRERBJSPR	270	50	BZKL150SPABJSPR	500	50	BZKL150PTBJSPR	600	50						
								200kg	BZKFL150ERBJSPR200	200	50		BZKFL150SRERBJSPR200	200	50	BZKFL150SPABJSPR200	200	50	BZKFL150PTBJSPR200	200	50						
								600kg	BZKFL150ERBJSPR	350	50		BZKFL150SRERBJSPR	270	50	BZKFL150SPABJSPR	500	50	BZKFL150PTBJSPR	600	50						
						200	257	237	138 x 110	105 x 80/75	10	☺	☺	200kg	BZKL200ERBJSPR200	200	50	182	BZKL200SRERBJSPR200	200	50	BZKL200SPABJSPR200	200	50	BZKL200PTBJSPR200	200	50
														600kg	BZKL200ERBJSPR	500	50		BZKL200SRERBJSPR	380	50	BZKL200SPABJSPR	500	50	BZKL200PTBJSPR	600	50
														200kg	BZKFL200ERBJSPR200	200	50		BZKFL200SRERBJSPR200	200	50	BZKFL200SPABJSPR200	200	50	BZKFL200PTBJSPR200	200	50
														600kg	BZKFL200ERBJSPR	500	50		BZKFL200SRERBJSPR	380	50	BZKFL200SPABJSPR	500	50	BZKFL200PTBJSPR	600	50

- Heavy duty castors with built-in suspension
- Unique elastomeric spring system reduces bounce under light loading
- Substantial noise reduction
- Reduction of wear and tear to floor surfaces
- Increase in wheel and equipment longevity
- Shock absorption protects the load
- Improved handling of equipment especially when cornering
- Ideal for use in the aerospace, glass and motor industries

# BZKL LOW LEVEL SERIES

Fabricated Zinc Plated Steel  
Single Ball Race Swivel Head



PLATE FIXING



500-700kg



70-85mm

## Top Plate Fixing

Dia (mm)	Height (mm)	Plate (mm)	Centres (mm)	Fitting Bolt (mm)	Type	Bearing	Nylon				94 Shore A Brown Polyurethane On Cast Iron			
							Code	Load (kg)	Tread (mm)	Radius (mm)	Code	Load (kg)	Tread (mm)	Radius (mm)
70	125	138 x 110	105 x 80/75	10			P 261	-	-	-	P 289	500	70	90
75	128	138 x 110	105 x 80/75	10			-	-	-	-	BZKL75PTBJ	500	75	93
82	131	138 x 110	105 x 80/75	10			BZKL82NYBJ	600	70	96	BZKL82PTBJ	700	70	96
85	133	138 x 110	105 x 80/75	10			BZKL85NYBJ	600	70	98	BZKL85PTBJ	700	70	98



# BZK SERIES

Fabricated Zinc Plated Steel  
Single Ball Race Swivel Head



PLATE FIXING



1500kg

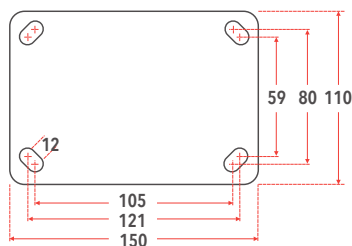


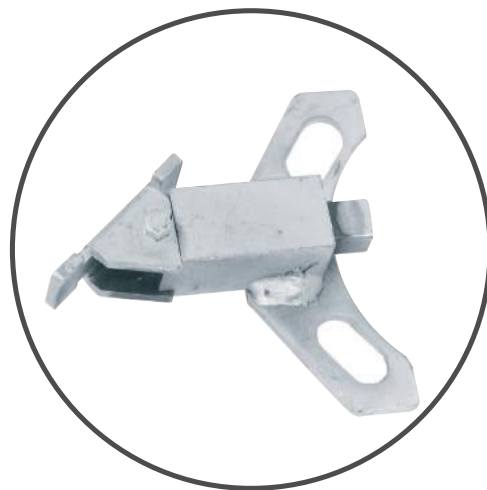
70-250mm

## Bracket Only

Dia (mm)	Swivel Code	Swivel Brake Code	Fixed Code	Plate Fitting	Steel Gauge Plate (mm)	Steel Gauge Fork (mm)	Height To Axle Hole (mm)	Fork Width (mm)	Axle Bolt (mm)	Load Capacity (kg)
70 to 85	BZK80AS	-	BZKF80AS	A	7.5	6	92	80	12	1500
100	BZK100AS	BZK100ASSWB	BZKF100AS	A	7.5	6	100	65	12	1500
125	BZK125AS	BZK125ASSWB	BZKF125AS	A	7.5	6	115	65	12	1500
150	BZK150AS	BZK150ASSWB	BZKF150AS	A	7.5	6	125	65	12	1500
200	BZK200AS	BZK200ASSWB	BZKF200AS	A	7.5	6	150	65	12	1500
200	BZK200AS/90	-	-	A	7.5	6	150	90	12	1500
250	BZK250AS	BZK250ASSWB	BZKF250AS	A	7.5	6	175	65	12	1500
250	BZK250AS/90	-	-	A	7.5	6	175	90	12	1500

Type A





Directional Lock Available Add DL To Code

Footguards Available Add FG To Code

- Single piece forged alloy steel top plate and fork base
- Precision CNC-machined raceways
- Induction-hardening of raceways ensures uniform depth of hardness
- Totally sealed swivel head with grease nipple
- 6mm thick legs cylindrically - formed legs - robotically welded inside and outside

## HIGH TEMPERATURE

BIL Offers 150mm and 200mm  
castors for 200°C temperatures  
- refer to pages 160 -161



# BZK SERIES

Fabricated Zinc Plated Steel  
Single Ball Race Swivel Head



PLATE FIXING 210-1400kg 100-250mm

## Plate Fitting

Dia (mm)	Height (mm)	Plate (mm)	Centres (mm)	Fixing Bolt (mm)	Type	Bearing	Nylon			65 Shore A Black High Quality Elastic Rubber On Aluminium			75 Shore A Black Elastic Rubber On Cast Iron			Cast Iron												
							Code	Load (kg)	Tread (mm)	Radius (mm)	Code	Load (kg)	Tread (mm)	Radius (mm)	Code	Load (kg)	Tread (mm)	Radius (mm)	Code	Load (kg)	Tread (mm)	Radius (mm)						
100	150	150 x 110	105/121 x 80/59	12	⊗	ECB	BZK100NY	400	35	93	-	-	-	-	-	-	-	-	-	-	BZK100CI	400	50	93				
							BZK100NYBJ	650	40	-	BZK100ERBJ	250	50	93	BZK100CRBJ	210	50	93	BZK100CIBJ	400	50	-						
							BZK100NYSWB	400	35	130	-	-	-	-	-	-	-	-	-	-	-	-	-	BZK100CI	400	50	130	
							BZK100NYBSWB	650	40	-	BZK100ERBJSWB	250	50	130	BZK100CRBJSWB	210	50	130	BZK100CIBJSWB	400	50	-						
125	177	150 x 110	105/121 x 80/59	12	⊗	ECB	BZK125NY	-	-	-	-	-	-	-	-	-	-	-	-	-	BZK125CI	550	50	-				
							BZK125NYBJ	750	45	115	-	-	-	-	-	-	-	-	-	-	-	-	-	BZK125CIBJ	550	50	115	
							BZK125NYSWB	-	-	-	BZK125ERBJ	270	50	115	BZK125CRBJ	300	50	115	BZK125CIBJ	550	50	-						
							BZK125NYBSWB	750	45	130	-	-	-	-	-	-	-	-	-	-	-	-	-	BZK125CISWB	550	50	130	
150	200	150 x 110	105/121 x 80/59	12	⊗	ECB	BZK125NYBSWB	750	45	-	BZK125ERBJSWB	270	50	-	BZK125CRBJSWB	300	50	-	BZK125CIBJSWB	550	50	-						
							BZK125NYBJSWB	1000	-	-	-	-	-	-	-	-	-	-	-	-	-	-	-	BZK125CIBJSWB	550	50	-	
							BZKF125NY	-	-	-	-	-	-	-	-	-	-	-	-	-	-	-	-	-	BZKF125CI	550	50	-
							BZKF125NYBJ	750	45	-	BZKF125ERBJ	270	50	-	BZKF125CRBJ	300	50	-	BZKF125CIBJ	550	50	-						
200	250	150 x 110	105/121 x 80/59	12	⊗	ECB	BZK150NY	800	-	-	-	-	-	-	-	-	-	-	-	-	BZK150CI	910	50	-				
							BZK150NYBJ	1000	45	130	-	-	-	-	-	-	-	-	-	-	-	-	-	BZK150CIBJ	910	50	130	
							BZK150NYSWB	800	-	-	BZK150ERBJ	350	50	130	BZK150CRBJ	350	50	130	BZK150CIBJ	910	50	-						
							BZK150NYBSWB	800	45	140	-	-	-	-	-	-	-	-	-	-	-	-	-	BZK150CISWB	910	50	140	
250	300	150 x 110	105/121 x 80/59	12	⊗	ECB	BZK150NYBJSWB	1000	-	-	BZK150ERBJSWB	350	50	-	BZK150CRBJSWB	350	50	-	BZK150CIBJSWB	910	50	-						
							BZKF150NY	800	-	-	-	-	-	-	-	-	-	-	-	-	-	-	-	BZKF150CI	910	50	-	
							BZKF150NYBJ	800	45	-	BZKF150ERBJ	350	50	-	BZKF150CRBJ	350	50	-	BZKF150CIBJ	910	50	-						
							BZKF150NYBJ	1000	-	-	BZKF150ERBJ	350	50	-	BZKF150CRBJ	350	50	-	BZKF150CIBJ	910	50	-						
250	300	150 x 110	105/121 x 80/59	12	⊗	ECB	BZK200NY	1000	-	-	-	-	-	-	-	-	-	-	-	-	BZK200CI	1000	50	-				
							BZK200NYBJ	1000	50	165	-	-	-	-	-	-	-	-	-	-	-	-	-	BZK200CIBJ	1000	50	165	
							BZK200NYSWB	1000	-	-	BZK200ERBJ	500	50	165	BZK200CRBJ	450	50	165	BZK200CIBJ	1000	50	-						
							BZK200NYBSWB	1000	50	165	-	-	-	-	-	-	-	-	-	-	-	-	-	BZK200CISWB	1000	50	165	
250	300	150 x 110	105/121 x 80/59	12	⊗	ECB	BZK200NYBJSWB	1000	-	-	BZK200ERBJSWB	500	50	-	BZK200CRBJSWB	450	50	-	BZK200CIBJSWB	1000	50	-						
							BZKF200NY	1000	-	-	-	-	-	-	-	-	-	-	-	-	-	-	-	-	BZKF200CI	1000	50	-
							BZKF200NYBJ	1000	50	-	BZKF200ERBJ	500	50	-	BZKF200CRBJ	450	50	-	BZKF200CIBJ	1000	50	-						
							BZKF200NYBJ	1000	-	-	-	-	-	-	-	-	-	-	-	-	-	-	-	-	-	-	-	
250	300	150 x 110	105/121 x 80/59	12	⊗	ECB	BZK250NY	930	50	-	-	-	-	-	-	-	-	-	-	-	-	-	-					
							BZK250NYBJ	1200	50	197	-	-	-	-	-	-	-	-	-	-	-	-	-	-	BZK250CIBJ	1250	50	197
							BZK250NYSWB	930	50	-	BZK250ERBJ	650	50	197	BZK250CRBJ	500	50	197	BZK250CIBJ	1250	50	-						
							BZK250NYBSWB	1200	50	197	BZK250ERBJ/75	750	75	-	BZK250CRBJ/75	750	75	-	BZK250CIBJ/75	-	-	-						
250	300	150 x 110	105/121 x 80/59	12	⊗	ECB	BZK250NYBJSWB	1200	50	-	BZK250ERBJSWB	650	50	-	BZK250CRBJSWB	500	50	-	BZK250CIBJSWB	1250	50	-						
							BZKF250NY	930	50	-	-	-	-	-	-	-	-	-	-	-	-	-	-	-	-	-		
							BZKF250NYBJ	1200	50	-	BZKF250ERBJ	650	50	-	BZKF250CRBJ	500	50	-	BZKF250CIBJ	1250	50	-						
							BZKF250NYBJ	1200	50	-	-	-	-	-	-	-	-	-	-	-	-	-	-	-	-	-		