

# Shelving system

Shelving system can be built as a combination of cabinets and shelves and you can use it as a space divider. The storage system is available in two

standard heights: 200 cm and 240 cm and two widths: 80 cm and 100 cm.



All standard and extension parts include 6 shelves.



## Standard bays

Name	Size W x D mm	Code
Standard bay 80/30/200	824 x 300 x 2000	C 313 49 001
Standard bay 80/40/200	824 x 400 x 2000	C 314 49 001
Standard bay 100/30/200	1024 x 300 x 2000	C 313 49 002
Standard bay 100/40/200	1024 x 400 x 2000	C 314 49 003
Standard bay 100/50/200	1024 x 500 x 2000	C 315 49 001
Standard bay 100/60/200	1024 x 600 x 2000	C 316 49 001
Standard bay 80/40/240	824 x 400 x 2400	C 314 49 002
Standard bay 100/40/240	1024 x 400 x 2400	C 314 49 004
Standard bay 100/50/240	1024 x 500 x 2400	C 315 49 002
Standard bay 100/60/240	1024 x 600 x 2400	C 316 49 002

## Extension bays

Name	Size W x D mm	Code
Extension bay 80/30/200	804 x 300 x 2000	C 323 49 001
Extension bay 80/40/200	804 x 400 x 2000	C 324 49 001
Extension bay 100/30/200	1004 x 300 x 2000	C 323 49 002
Extension bay 100/40/200	1004 x 400 x 2000	C 324 49 003
Extension bay 100/50/200	1004 x 500 x 2000	C 325 49 001
Extension bay 100/60/200	1004 x 600 x 2000	C 326 49 001
Extension bay 80/40/240	804 x 400 x 2400	C 324 49 002
Extension bay 100/40/240	1004 x 400 x 2400	C 324 49 004
Extension bay 100/50/240	1004 x 500 x 2400	C 325 49 002
Extension bay 100/60/240	1004 x 600 x 2400	C 326 49 002

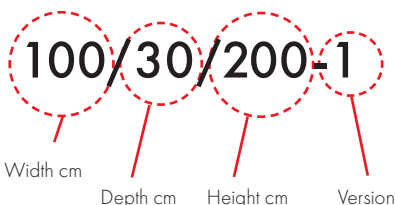
All standard and extension bays include 6 shelves



### The W x D x H rule

All our dimensions follow a WDH rule, where the first dimension is the width (W), the middle the depth (D), and the last the height (H).

### Combination name



### Load capacity

1000 kg/bay

width 824 mm

150 kg/shelf

width 1024 mm

150 kg/shelf

# Shelving system combinations



100/30/200-8 C 340 07 108

Qty	Name	Size mm	Code
3	End frame/open	300 x 2000	830 615-49
8	Shelf+brackets	1000 x 300	852 175-49
4	Perforated panel	983 x 500	852 145-07
2	Cross support pair 1000		852 176-49



1. 100/40/200-1 C 344 07 001

Qty	Name	Size mm	Code
1	Cabinet 100/40/200	1030 x 430 x 2010	C 344 07 000
4	Shelf	1000 x 400	852 231-49



### Move with a pallet truck

The cabinet can be moved with a pallet truck or a forklift when the plinth front panel has been removed. Cabinets are equipped with adjustment screws.



2. 100/40/200-4 C 344 07 004

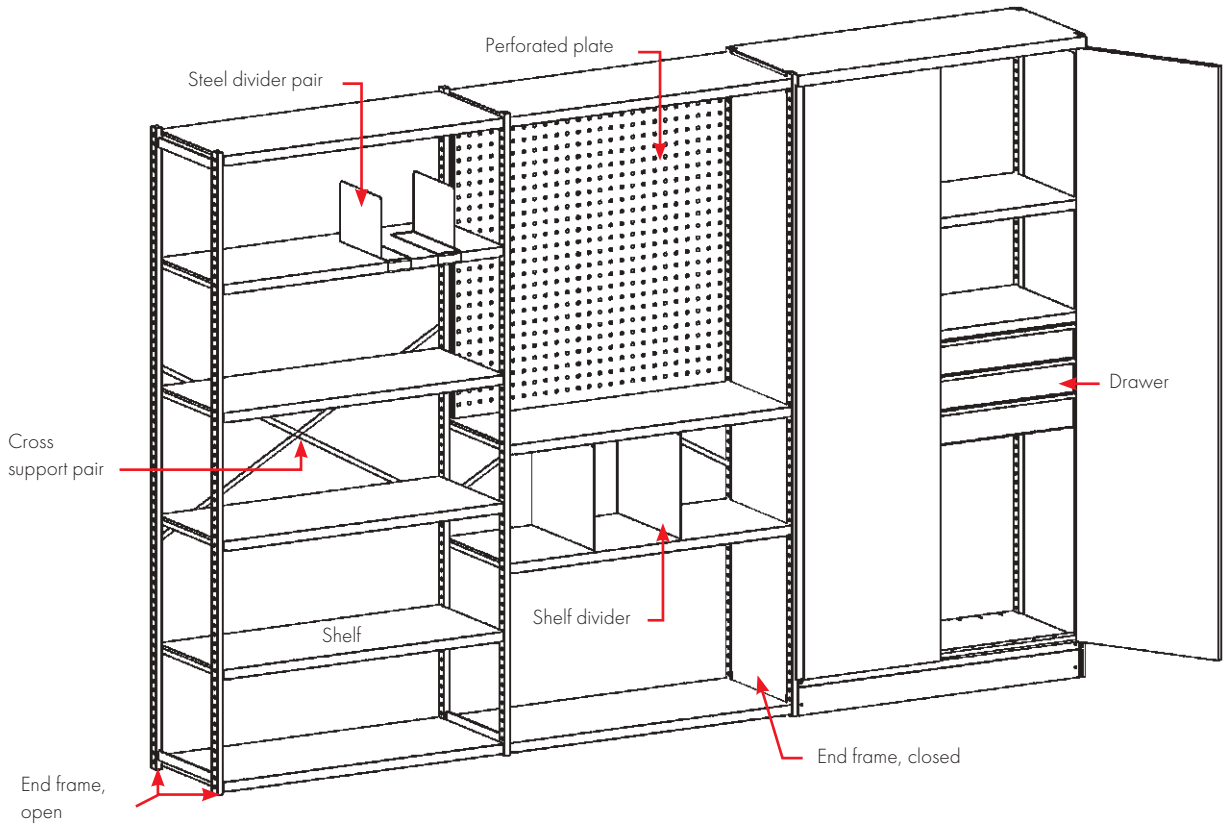
Qty	Name	Size mm	Code
1	Cabinet 100/40/200	1030 x 430 x 2010	C 344 07 000
2	Shelf	1000 x 400	852 231-49
2	Perforated panel	983 x 500	852 145-07
3	Drawer 400		834 513-49



100/40/200-9 C 340 07 109

Qty	Name	Size mm	Code
2	End frame/open	400 x 2000	830 895-49
14	Shelf+brackets	1000 x 400	852 231-49
2	Cross support pair 1000		852 176-49
2	Perforated panel	983 x 500	852 145-07
1	Cabinet 100/40/200	1030 x 430 x 2010	C 344 07 000

Shelving system includes a wide range of different parts which can be used to create a fully tailor-made solution.



### Shelving system components

Name	Size D x H mm	Code
End frame, open	300 x 2000	830 615-49
End frame, open	400 x 2000	830 895-49
Sidewall	400 x 2000	859 440-49
End frame, open	500 x 2000	851 719-49
Sidewall	500 x 2000	859 450-49
End frame, open	600 x 2000	851 725-49
Sidewall	600 x 2000	859 460-49
End frame, open	400 x 2400	851 717-49
End frame, open	500 x 2400	851 721-49
End frame, open	600 x 2400	851 724-49
Cross support pair 1000		852 176-49
Cabinet 100/40/200	1030 x 430 x 2010	C 344 07 000
Cabinet 100/50/200	1030 x 530 x 2010	C 345 07 000
Cabinet 100/60/200	1030 x 630 x 2010	C 346 07 000
Back wall 1000	1000 x 2000	859 447-49
Perforated end plate 400	340 x 2000	830 917-07
Screw set (fixing back to back)		838 440-51
Perforated panel 1000	983 x 500	852 145-07
Additional support for shelf 1000		852 267-49

### Shelves

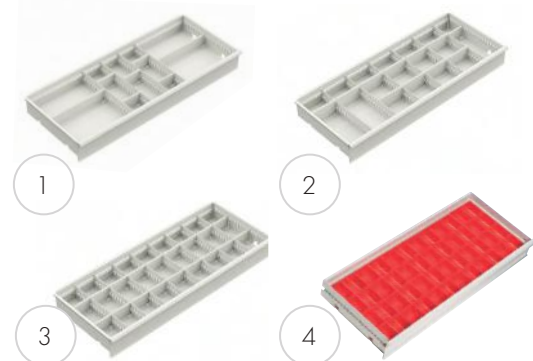
Name	Size W x D mm	Max load kg	Code
Shelf	800 x 300	150	852 235-49
Shelf	800 x 400	150	852 234-49
Shelf	1000 x 300	150	852 175-49
Shelf	1000 x 400	150	852 231-49
Shelf	1000 x 500	150	852 185-49
Shelf	1000 x 600	150	852 187-49

### Shelf dividers

Name	Size D x H mm	Code
Steel divider pair	190 x 285	861 116-49
Divider pair	190x385	861118-49
Shelf divider 400	400 x 180	832 839-49
Shelf divider 400	400 x 260	832 847-49
Shelf divider 400	400 x 370	832 855-49
Shelf divider 500	500 x 260	852 271-49
Shelf divider 500	500 x 370	852 273-49
Shelf divider 600	600 x 260	852 797-49
Shelf divider 600	600 x 370	852 798-49

### Drawers and interior combinations

Name	Size W x D x H mm	Max load kg	Code
Drawer 100/100, for 400 deep cabinet	920 x 345 x 107	30	834 513-49
Drawer 100/100, for 500 deep cabinet	920 x 345 x 107	30	834 514-49
1 Middle divider and middle plates			834 507-49
2 Middle divider and middle plates			834 508-49
3 Middle divider and middle plates			834 509-49
4 Pick up boxes			834 512-00



# Heavy shelving system

Heavy shelving system is suitable for large and heavy items. The shelf load capacity is 400 kg and the shelf depth is 70 cm. It can be built as a combination of

cabinets, drawers and shelves. The heavy storage system comes in one standard height of 200 cm and two widths: 75 cm and 95 cm.



All standard and extension bays include 6 shelves.



## Standard bays

Name	Size W x D x H mm	Code
Standard bay, open	750 x 714 x 2000	C 375 49 001
Standard bay, closed*	750 x 714 x 2000	C 376 49 001
Standard bay, open	950 x 714 x 2000	C 395 49 001
Standard bay, closed*	950 x 714 x 2000	C 396 49 001

\*The standard bay, closed, includes back sheet and closed ends.

## Extension bays

Name	Size W x D x H mm	Code
Extension bay, open	705 x 714 x 2000	C 377 49 001
Extension bay, closed*	705 x 714 x 2000	C 378 49 001
Extension bay, open	905 x 714 x 2000	C 397 49 001
Extension bay, closed*	905 x 714 x 2000	C 398 49 001

\*The standard bay, closed, includes back sheet and closed ends.



### The W x D x H rule

All our dimensions follow a WDH rule, where the first dimension is the width (W), the middle the depth (D), and the last the height (H).



Heavy shelving system is being updated. Please confirm latest codes and details from sales.

### Load capacity

2000 kg/bay

width 750 mm



400 kg/shelf

width 950 mm



350 kg/shelf

# Heavy shelving system combinations



**95/200-1 C 395 49 001**

Qty	Name	Size mm	Code
2	End frame/open	714 x 2000	851 655-49
6	Shelf 90	860 x 714	851 663-49
1	Cross support pair		851 671-49



**75/200-2 C 377 07 002**

Qty	Name	Size mm	Code
2	Base/top 70	660 x 714	851 656-49
1	Back sheet 70	740 x 1990	851 700-49
2	End frame/closed	714 x 2000	852 449-49
5	Shelf 70	660 x 714	851 658-49
1	Door pair	700 x 2000	854 400-07



**75/200-28 C 399 07 008**

Qty	Name	Size mm	Code
1	Locking shelf	660 x 714	851 657-49
1	End frame/open	714 x 2000	851 655-49
4	Base/top 70	660 x 714	851 656-49
7	Shelf 70	660 x 714	851 658-49
1	Locking element		851 675-49
2	End frame/closed	714 x 2000	852 449-49
3	Drawer 70/50	612 x 612 x 50	833 967-07
2	Drawer 70/100	612 x 612 x 100	833 975-07
2	Drawer 70/150	612 x 612 x 150	833 983-07
1	Drawer 70/250	612 x 612 x 250	833 991-07
1	Back sheet 70	740 x 1990	851 700-49



**75/200-9 C 399 07 009**

Qty	Name	Size mm	Code
1	Locking shelf	660 x 714	851 657-49
4	Base/top 70	660 x 714	851 656-49
7	Shelf 70	660 x 714	851 658-49
3	End frame/closed	714 x 2000	852 449-49
3	Drawer 70/50	612 x 612 x 50	833 967-07
2	Drawer 70/100	612 x 612 x 100	833 975-07
2	Drawer 70/150	612 x 612 x 150	833 983-07
1	Drawer 70/250	612 x 612 x 250	833 991-07
2	Back sheet 70	740 x 1990	851 700-49
1	Door pair	700 x 2000	854 400-07
1	Locking element		851 675-49

### Combination name

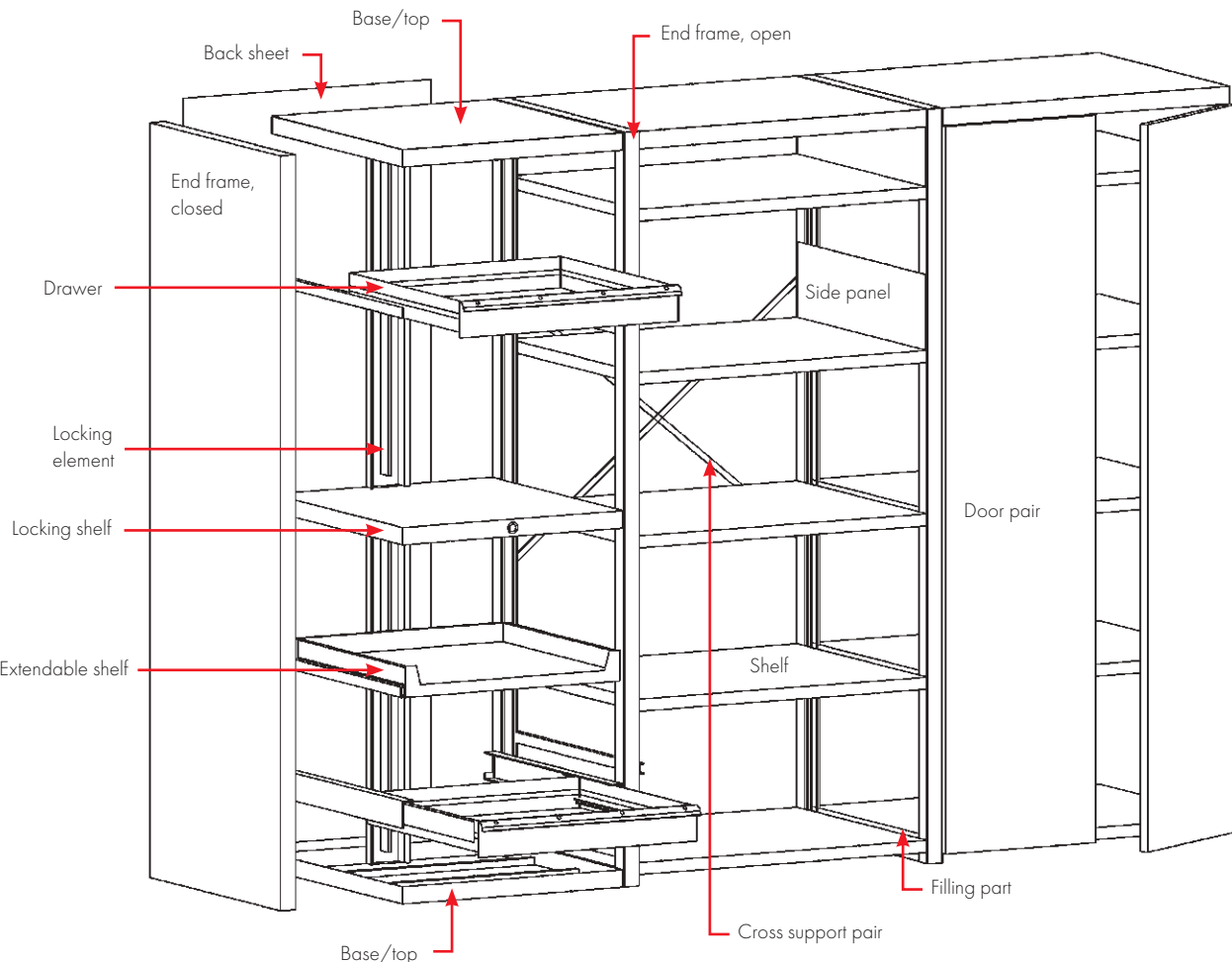
95/200+1

Width cm

Height cm

Version

Heavy shelving system includes a wide range of different parts which can be used to create a fully tailor-made solution.



### Heavy shelving system components

Name	Size W x D mm	Max load kg	Code
End frame/open	714 x 2000		852 002-49
End frame/closed	714 x 2000		852 449-49
Base/top 70	660 x 714		852 004-49
Base/top 90	860 x 714		852 013-49
Cross support pair			851 671-49
Back sheet 70	740 x 1990		852 009-49
Back sheet 90	940 x 1990		852 016-49
Shelf 70	660 x 714	400	852 003-49
Shelf 90	860 x 714	350	852 012-49
Door pair*	700 x 2000		852 000-07
Door pair*	900 x 2000		852 011-07
Locking shelf 70*	660 x 714		852 007-49
Locking shelf 90*	860 x 714		852 015-49
Locking element	1000		851 675-49

\*Door/locking shelf equipped with lock

### Heavy shelving system drawers

Name	Size W x D mm	Effective height mm	Max load kg	Opens %	Code
Drawer 70/50	612 x 612 x 50	35	75	100	833 967-07
Drawer 70/75	612 x 612 x 75	60	75	100	833 401-07
Drawer 70/100	612 x 612 x 100	85	75	100	833 975-07
Drawer 70/125	612 x 612 x 125	110	75	100	833 320-07
Drawer 70/150	612 x 612 x 150	135	75	100	833 983-07
Drawer 70/250	612 x 612 x 250	235	75	100	833 991-07
Extendable shelf 70	612 x 612 x 85		75	100	85 2017-07
Drawer 90/75	860 x 612 x 75	49	75	100	854 262-07
Drawer 90/100	860 x 612 x 100	74	75	100	854 246-07
Drawer 90/150	860 x 612 x 150	124	75	100	854 248-07
Drawer 90/250	860 x 612 x 250	224	75	100	854 249-07



For 200 kg loading capacity on drawers and extendable shelves add H to the end of code.



# Shelving cabinets

Shelving cabinets are made of epoxy powder coated steel. The frames are painted with light grey RAL 7035 and doors either with blue RAL5007 or with light grey RAL7035. The cabinet has sturdy double leaf-doors, flush fitting handle with two keys. Shelving cabinet can be moved with fork lift. There are leveling screws under the cabinet for adjusting the cabinet straight. The shelving cabinets are pre-assembled.

Loading capacity 150kg/shelf, 600kg/cabinet.



### Move with a pallet truck

The cabinet can be moved with a pallet truck or a forklift when it is empty. Cabinets are equipped with adjustment screws.

Name	Size WxDxH mm	Code
Shelving cabinet 100/40/200	1030x430x2010	SC10040200-07
Shelving cabinet 100/50/200	1030x530x2010	SC10050200-07
Shelving cabinet 100/60/200	1030x630x2010	SC10060200-07

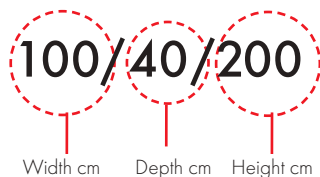
Includes 4 shelves



### The W x D x H rule

All our dimensions follow a WDH rule, where the first dimension is the width (W), the middle the depth (D), and the last the height (H).

### Combination name



### Load capacity

150 kg/shelf



600 kg/cabinet





## Storage and charging cabinet



A storage and charging cabinet is ideal for storing personal valuables during the workday and at the same time it provides a possibility to charge mobile phones/tablets/laptops. The storage and charging cabinet consists of six lockers and each locker is equipped with a double socket and a secure electronic code lock. This electronic locking system replaces keys with a numerical code.

The locking system is operated with 2 x AAA batteries and is thus independent of an external power supply. Due to an automatic low power (sleep) mode, the batteries are long lasting, and even when the battery power is low, the lock can still be opened up to 300 times.

Storage and charging cabinets are made of epoxy powder-coated steel. The frames are painted with light grey RAL 7035 and doors either with light grey RAL 7035 or with red RAL 3002. On the back panel of the lockers there is perforation for air ventilation. The inner measurements of the lockers are D x W x H 430 x 310 x 205 mm. Storage and charging cabinets are pre-assembled.

Name	Size W x D x H mm	Internal locker dimensions mm	Code
Storage and charging cabinet, grey doors	350 x 540 x 1525	310 x 430 x 205	SCC-41
Storage and charging cabinet, red doors	350 x 540 x 1525	310 x 430 x 205	SCC-25





# Industrial cabinets



Treston industrial cabinets include a wide range of accessories e.g. for tool storage, allowing a versatile storage solution to be created.

**NEW:**All cabinets are also available with flush fitting handle lock or digital code lock.

Alternate locking method can be ordered by adding a T or E in the end of the product code (e.g. C309 07 000 T).



**T** = for flush fitting handle.



**E** = for digital code lock

Both locks are also available to the industrial shelving system and heavy shelving system cabinets.

## Industrial cabinet combinations



**55/100-1 C 301 07 001**

Qty	Name	Code
1	Cabinet frame 55/100	C 301 07 000
2	Steel shelf 55	854 349-49



**80/100-1 C 305 07 001**

Qty	Name	Code
1	Cabinet frame 80/100	C 305 07 000
2	Steel shelf 80	854 345-49



**80/100-2 C 305 07 002**

Qty	Name	Code
1	Cabinet frame 80/100	C 305 07 000
2	Steel shelf 80	854 345-49
1	Drawer 80	854 346-49

### Combination name

**55/100-1**

Width cm

Height cm

Version

Depth of cabinet: 425 mm



### Practical!

100 cm high cabinet tops have a back stop and rubber mat to be used as an additional work top.



## Computer cabinet

Computer cabinet protects equipment from dust and dirt, even in the most demanding conditions. The computer cabinet is pressurised and equipped with an air filter that keeps the dust out. A screen up to a maximum size of 19" will fit in the computer cabinet.



## Computer cabinets

Name	Size mm	Code
Computer cabinet	800 x 500 x 1600	854 358-49
Computer cabinet (without the energy rail)	800 x 500 x 1600	854 364-49



### 55/160-1 C 303 07 001

Qty	Name	Code
1	Cabinet frame 55/160	C 303 07 000
3	Steel shelf 55	854 349-49

### 80/160-1 C 307 07 001

Qty	Name	Code
1	Cabinet frame 80/160	C 307 07 000
3	Steel shelf 80	854 345-49

### 80/160-2 C 307 07 102

Qty	Name	Code
1	Cabinet frame 80/160	C 307 07 000
2	Steel shelf 80	854 345-49
4	Suspension rail, M750	859 151-49
21	Plastic container 1015-5	806 207-00
5	Container, 1525-5	806 208-00



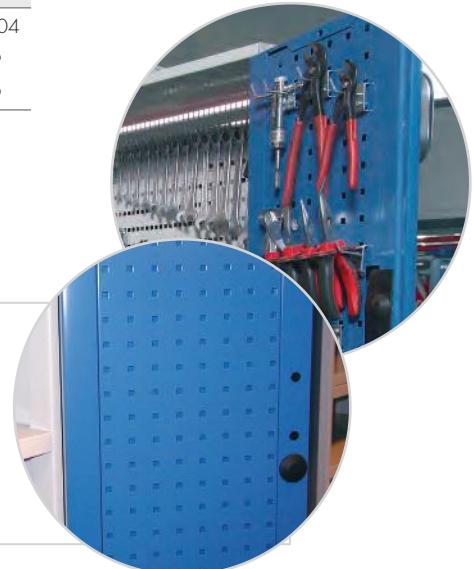
### 80/160-3 C 307 07 003

Qty	Name	Code
1	Cabinet frame 80/160	C 307 07 004
3	Steel shelf 80	854 345-49
1	Extendable shelf 80	854 347-49



#### More space for tools

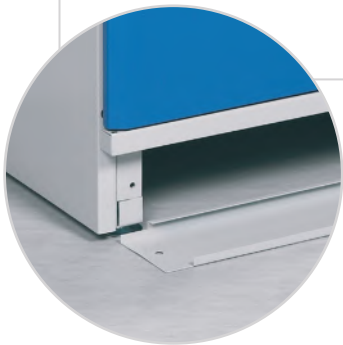
A much larger amount of space is available for storing tools if the perforated wall panel 854 353-07 is installed on the door or side wall of cabinet 80.





### Move with a pallet truck

The cabinet can be moved with a pallet truck or a forklift when the plinth front panel has been removed. Cabinets are equipped with adjustment screws.



**80/200-1 C 309 07 001**

Qty	Name	Code
1	Cabinet frame 80/200	C 309 07 000
4	Steel shelf 80	854 345-49



**80/200-2 C 309 07 102**

Qty	Name	Code
1	Cabinet frame 80/200	C 309 07 000
2	Drawer 80	854 346-49
2	Steel shelf 80	854 345-49
5	Plastic container 1525-5	806 208-00
1	Suspension rail, M750	859 151-49
1	Extendable shelf 80	854 347-49
1	Perforated panel 718 x 612	861 512-07
2	Perforated panel 288 x 712	854 353-07
1	Pair of support feet	864 730-49



**80/200-3 C 309 07 103**

Qty	Name	Code
1	Cabinet frame 80/200	C 309 07 000
2	Drawer 80	854 346-49
2	Steel shelf 80	854 345-49
3	Shelf divider H 370/400	832 855-49
1	Perforated panel 736x 640	835 633-07
1	Extendable shelf 80	854 347-49
1	Pair of support feet	864 730-49
1	Pair of steel dividers	861 116-49
1	Drawer for suspension folders	854 348-49



**80/200-4 C 309 07 004**

Includes 2 pcs steel shelves 80 , 854 345-49.



### An extendable shelf for the cabinet

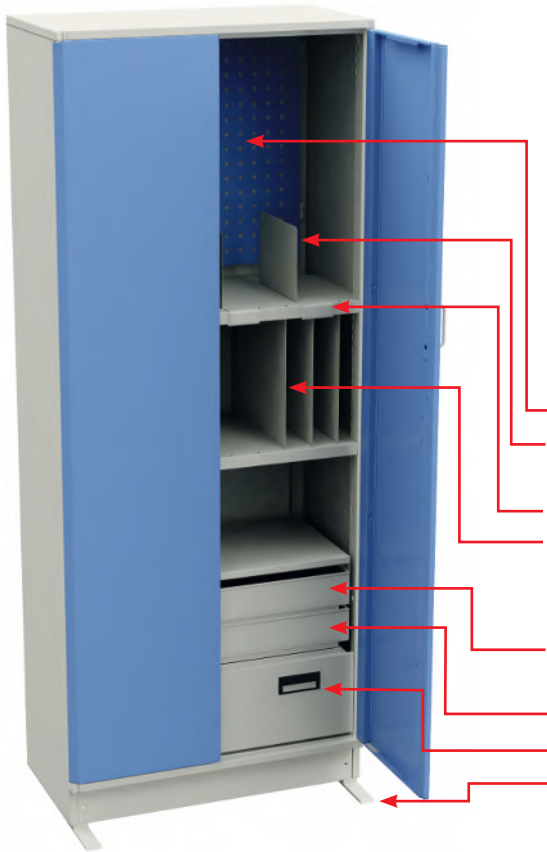
When the cabinet is used for storing folders, a separate extending shelf is a good idea. This shelf makes it easy to browse through the folders.





# Industrial cabinet accessories

All the M750 accessories fit the cabinet 80 and can be easily installed inside.



## Cabinet frames

Name	Size W x D x H mm	Code
Cabinet frame 55/100	550 x 425 x 1000	C 301 07 000
Cabinet frame 80/100	800 x 425 x 1000	C 305 07 000
Cabinet frame 55/160	550 x 425 x 1600	C 303 07 000
Cabinet frame 80/160	800 x 425 x 1600	C 307 07 000
Cabinet frame 80/160, half doors	800 x 425 x 1600	C 307 07 004
Cabinet frame 80/200	800 x 425 x 2000	C 309 07 000

Cabinet frames can be ordered with a turning handle with integrated key lock by adding a T in the end of the product code (e.g. C309 07 000 T).

## Cabinet accessories

Name	Size W x D x H mm	Max load kg	Code
Perforated panel for the door or side wall	290 x 740		854 353-07
Perforated panel for the back wall M500	468 x 389		860 951-49
Perforated panel for the back wall M750	718 x 612		835 633-07/-49
Perforated panel for the back wall M750	718 x 1003		835 641-07/-49
Pair of steel dividers	1 x 285 x 190		861 116-49
Steel shelf 55	545 x 391 x 32	100	854 349-49
Steel shelf 80	730 x 396 x 32	100	854 345-49
Shelf divider	1 x 400 x 180		832 839-49
Shelf divider	1 x 400 x 260		832 847-49
Shelf divider	1 x 400 x 370		832 855-49
Extendable shelf 80	730 x 362 x 42	30	854 347-49
Drawer 55	480 x 362 x 90	30	854 344-49
Drawer 80	730 x 362 x 90	30	854 346-49
Drawer for suspension folders	724 x 350 x 240	30	854 348-49
Pair of support feet	40 x 220 x 6		864 730-49
Suspension rail		50	859 151-49

## Cone rack with hooks HSK, Capto, ISO

Name	Size W x D x H mm	Max load kg	Code
Cone rack with hooks	742 x 188 x 90	50	854 430-49

## Tool brackets

Name	Rack with hooks can hold pcs	Code
ISO 50	8	837 770-00
HSK 40A/50B	9	854 215-00
HSK 63A/80B	7	854 217-00
HSK 100A/125B	7	854 219-00
Capto C4	9	854 201-00
Capto C5	9	854 202-00
Capto C6	6	854 203-00



Cone rack with hooks